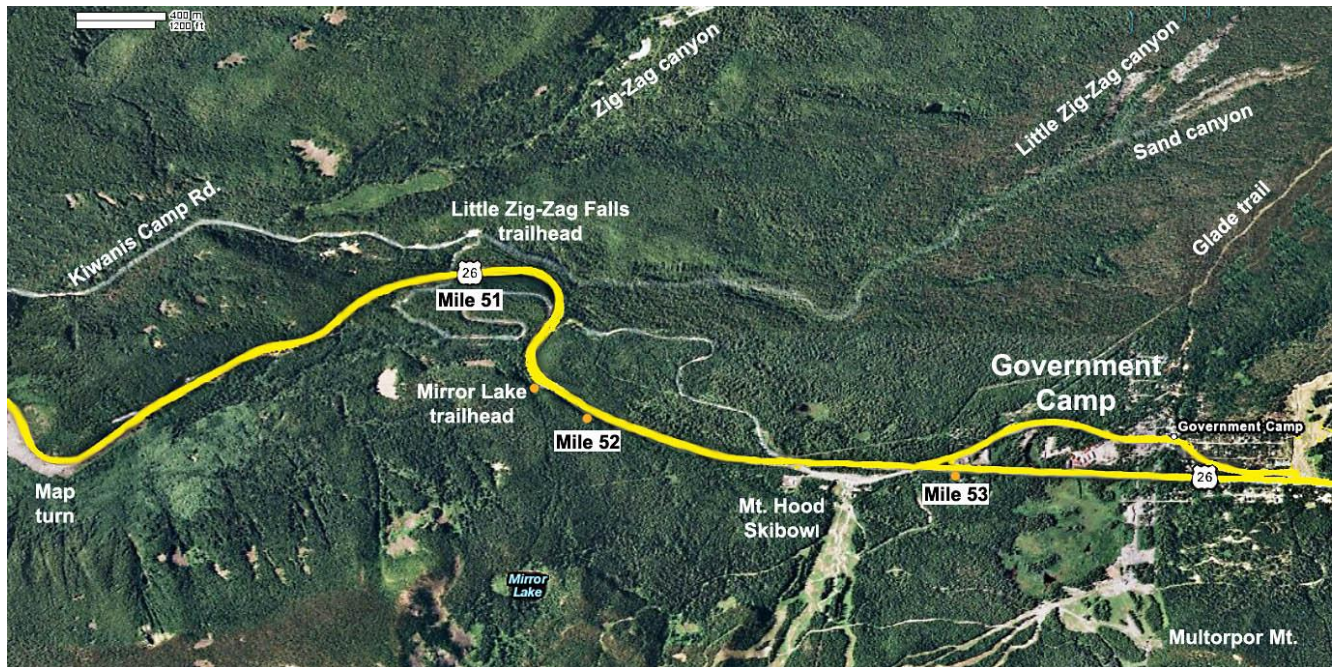


Mountain High Snowsport Club
presents
Timberline to Rhododendron
A bicycle ride through the History of Mt. Hood



The thick yellow line is the modern Highway 26.

The thinner more wiggly white line is the older highway, now abandoned.

Laurel Hill, the steepest part of the Barlow trail, is just left of the “Mile 51” marker.

On this bike ride, we shall visit:

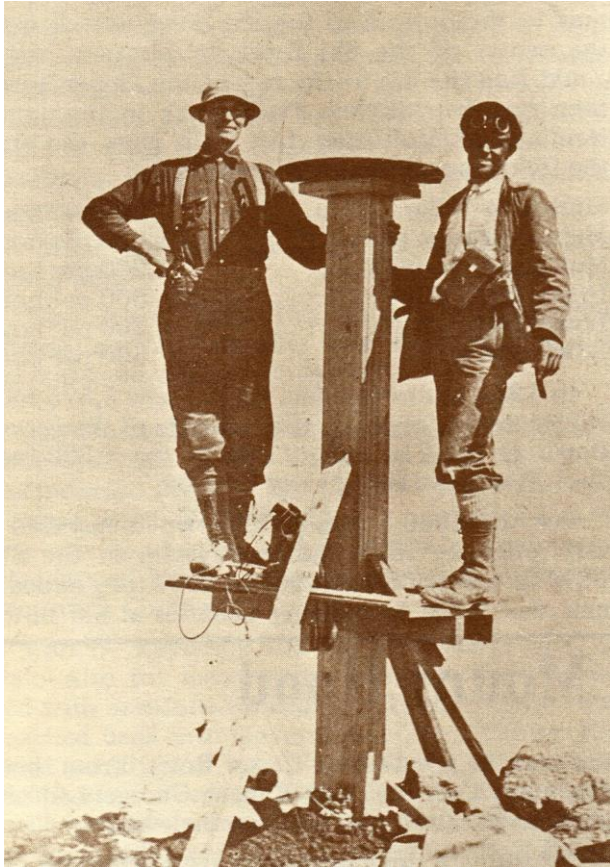
- * **West Leg Road**, the original road to Timberline. Skiable during the winter, but paved and open to car traffic in the summer.
- * **The original highway**, the one on which President Roosevelt drove up.
- * **Historic buildings** in Government Camp: Mt. Hood Museum, Huckleberry Inn, Cascade Lodge, Charlie's Pub.
- * **The starting point for the SkiWay aerial tram**, the bus on cables to Timberline.
- * **Laurel Hill** - the steepest part of the original Barlow Trail.
- * **The "bat cave"** - which is actually a **narrow tunnel** made for horses. Yes, for the US Cavalry! After all, that's how Government Camp got its name. It was military outpost for a while.
- * **The Little Zig Zag Falls** (just a beautiful nature spot).
- * **Kiwanis Camp Rd.** (a starting point for several Mt. Hood hiking trails)

NOTE: Most of the riding will be on paved surfaces. A street bike is perfectly OK.

Mt. Hood

Cabin on the Summit of Mt. Hood

A cabin was built on top of Mt. Hood and served as a firefinder lookout station and permanent living quarters for a watchman. The cabin was manned from 1915 to 1933 by a succession of 12 hardy individuals.



Elijah Coleman proposed the plan to the Forest Service and actually built the cabin, with the help of several people who were paid \$5 a day for hauling all the timber and building tools up the mountain, including 120 pounds of nails.

Elijah manned the cabin for the first 4 years, during which time he became a legendary figure on the mountain, regularly spotting dozens of forest fires and reporting them to the Forest Service over miles of telephone wire that he himself strung all the way to the summit and had to take down in September for winter storage. The wire also required frequent repairs.

Elijah also rescued numerous people on the mountain, moving with extraordinary speed and agility up and down the mountain, often more than once in a single day.

First Lookout Station on the summit of Mt. Hood, 1915.

Elijah (Lige) Coleman on the left.

Photo US Forest Service.

Published in "Mt. Hood - A Complete History" by Jack Grauer, 1975, page 58.

Climbing to the Summit of Mt. Hood

The earliest reported climbers of Mt. Hood were not always truthful.

It is widely suspected that **Thomas Dryer**, publisher of the Weekly Oregonian, did not really reach the summit in his August 1854 expedition with several other people, though he had published a controversial account of it in his own newspaper. Members of his team used some ridiculous mathematical equation, based on the latitude of 44 degrees, the temperature, the southeast exposure, the depth of the snow and the meltage of the snow in the afternoon, to calculate the height of Mt. Hood as 18,361 feet. The actual height is 11,500 feet.

A **Mr. Belden** claimed, in October 1854, to have climbed the mountain. He found the summit to be at 19,400 feet, and that breathing was very difficult. Above 18,000 feet he claimed blood oozed from pores in the skin, eyes bled, and blood rushed from their ears.

The first well documented climb came on **August 6, 1857**. This climb was made by **Henry L. Pittock** (who later succeeded Thomas Dryer as editor of the Weekly Oregonian), **Prof. L.J.Powell**, **William S. Buckley**, **W. Lyman Chittenden**, and **James G. Deardorff**.



The Summit Ski Area in 1927.

Note that the Summit ski area is not on the summit of Mt. Hood, but rather at the highest point of the mountain pass on Highway 26.

The ski area is located on the North-East end of Government Camp.

Timberline Lodge

Timberline Lodge was built during the Great Depression by the Works Progress Administration in 1936. It was dedicated in **September 1937** by President **Franklin D. Roosevelt**, and he declared it a venture made possible by the WPA to represent new opportunities in the United States.

Artists working under the Federal Art Project created works and furnishings for the Lodge, which remain intact today at the Lodge. It is the only building today that is constructed and furnished **by hand**. The Lodge is an inn and ski resort, but it is also a museum—housing a catalogued permanent exhibition of American design, painting, and craft work of the 1930s. The building was declared a National Historic Landmark in 1978, has been filmed in numerous movies, including *The Shining*, in 1980.



Timberline Ski Area

This is the only ski area in North America that is open 12 months a year. It offers 3,690 vertical feet of skiable terrain. It is located on the south face of Mt. Hood, the tallest mountain in Oregon.

In 1939, Timberline installed its first chairlift, with one-person chairs, the first lift on the Magic Mile. This was only the second chairlift in the United States, right after Sun Valley. But, it was also the longest chairlift in the world for a while.

Today, Timberline has 4 detachable express quad chairlifts.



The Magic Mile, the first chairlift in Oregon in 1939, and also the longest one in the world at the time.

Government Camp

Government Camp began in 1849 when the first U.S. regiment of Mounted Riflemen crossed the plains into Oregon country arriving at The Dalles. Most of the troops and their equipment were transported downriver to Vancouver, Washington by boat. Plans changed and some of the troops were ordered to proceed to Oregon City via the Oregon Trail.

Bogged down by mud and snow, with half of the livestock lost or dead and soldiers near total exhaustion, Lt. David Frost abandoned 45 Cavalry wagons in October 1849, before starting down Laurel Hill. Their noted presence beside the Barlow Road became the namesake of the alpine village - Government Camp.



Government Camp in 1928

Rhododendron was Rowe

The town of **Rhododendron** used to be called **Rowe**, back at the beginning of the 20th century. Henry S. Rowe, mayor of Portland from June 1900 to January 1902, built Rhododendron Inn in 1905 on the 160-acre homestead he had purchased from Henry Hammond for \$1,200.

SkiWay to Timberline

In the early 50s, the Skiway aerial tram from Government Camp took skiers up to Timberline. It was actually a bus with wheels above its roof. The wheels travelled along a stationary cable. It took about 10 minutes one way! It was dismantled after a few short years, when a bus service proved faster and cheaper.

Photo from "Mt. Hood – A Complete History" by John F. Grauer, published in 1975.



Skiway to Timberline

Close-up of the bus that traveled along stationary cables from Government Camp to Timberline. It operated between 1951 – 1956.

A video newsreel from the 1950s

Some accounts claim that the "Skiway" took 30 minutes to complete the ride to Timberline, but this newsreel from 1956 says it took only 10 minutes. See it for yourself on YouTube at:

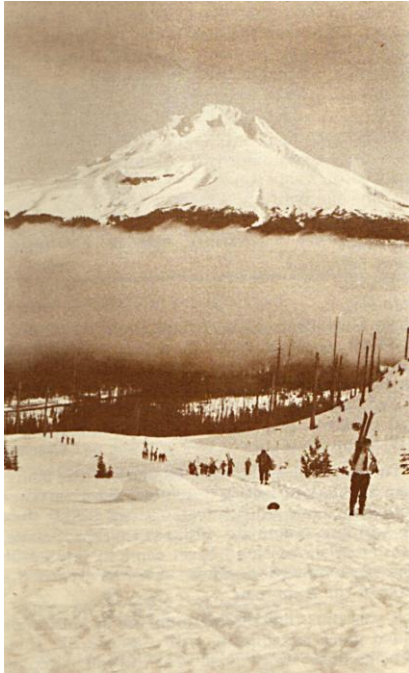
<http://www.youtube.com/watch?v=XtJBHKlrBCE>

Multorpor is now Skibowl East

Don't Call it Multipor!

Multorpor mountain was named by Will Steel for Multorpor Republican Club of Portland. The name is derived from the first letters of Multnomah, Oregon, and Portland: MULT-OR-POR. Not "Multipor", as some people mispronounce it! Now you know.

Multorpor and Skibowl



Multorpor and Skibowl began as two separate ski areas in 1928. The old supervisor of Mount Hood National Forest, Thomas Sherrard, was not interested in opening up the site for recreation.

"There are only two functions for this forest," he said. "One is to provide watershed area. The other is for grazing land."

"But the public wants trails and ski areas," Everett Sickler countered.

"The public can go to blazes," retorted the forester.

Still, the public prevailed, and by January 6, 1929, the newly founded Cascade Ski Club organized a ski jumping tournament attended by 3600 spectators.

The warming hut on the Skibowl side was built in 1937.

The two ski areas merged in 1964, when new owners took over, and Carl Reynolds became the president.

(Photo of skiers walking up into Ski Bowl circa 1938,)



Ski jumping at Multorpor in the early 1930s.

Photo by Hjalmar Hvam

Notice there were more spectators than skiers!

Some scenes from the bike ride



Man-made obstacle on the old road.



Nature closing in on the old road.



The old road is abruptly cut off here by the new Highway 26, but it continues on the opposite hill.



Fallen trees are obstacles on the old road



A side-trip to the Little Zig Zag waterfall.



A ride down Road 35, parallel to Hwy.26.

Mt. Hood Heritage Day bike ride

Sept. 18. (Saturday) 26 of us rode the West Leg Road from Timberline, then onto the old, abandoned Mt. Hood highway, across Laurel Hill, through an old tunnel made for horses, and on to Rhododendron, where we had an excellent lunch at the **Still Creek Inn**. See our [Photos](#) page for more.

We also stopped at the **Cascade Lodge**, where **Jean Korte**, the new manager, greeted us with lemonade and cookies, and **Rich Rizk** gave us a tour of the lodge. Did you know that you can stay at the Lodge for \$18 mid-week if you show your Mt.High/NWSCC membership card? On weekends, all guests pay \$22. But if you join the Cascade Ski Club, you can stay overnight at any time for just \$12.



Mt. High Seafood Party

Sept 25, 2010. Saturday. This annual party used to be held at someone's home. It was Violet and Greg's place last year. But, this year, it got so popular that we had to rent a space for it at Metzger Park. Good thing we did, because it was attended by about 97 people. See more on our [Photos](#) web page, www.mthigh.org/Photos.htm.



See more photos at www.mthigh.org/Photos.htm.