



Lift Lines

== No. 92, August 2008 ==

Mountain High Snowsport Club, PO Box 2182, Portland, OR 97208



Hi folks,

A fairly complete list of winter trips is listed on pages 6 - 9. Please sign up early, and note that some trips have a strict schedule of payments. Make this the year to **really** ski with the club!
- Emilio

Mt. High

Picnic

Mt. High



August 10 (Sunday).

Our annual picnic has been moved to start at **noon**.

This is a potluck. Bring some food, some drink, and maybe some chairs too.

To avoid conflict with the Bridge Pedal event, we will not have a bike ride of our own this time. See p. 2.

10th Annual "Clubs 4 Play" Golf Tournament

Mt. High Golfers,

We had a great turnout for the Clubs 4 Play Scramble on July 27th, at the Oregon City Golf Course. We had 12 teams total (48 players) and Mt High had three teams.

All teams received something for playing in this NW SkiClub Council event. The trophy went to Berfreunde, which had 7 teams.

Cal Eddy

Mt. High

Rafting weekend !

Mt. High



Aug. 15-17.

Two days of rafting on the Deschutes River. We have reserved camping spots at Maupin City Park from Thursday thru Sunday.

Sign up now!

Details on pages 3-4.

Note the color code.
Our club is blue.

2008 CALENDAR

Blue: Mountain High events

Red: NWSCC / FWSA events

Black: Generalevents

Aug. 10 (Sun): Mt. High Picnic

Aug. 15 - 17: Rafting on Deschutes

Aug. 21 (Thur.): Golf - 9 holes at Claremont, at 4:50 pm.

Aug. 28 (Thur.): Golf - 9 holes at Sandelie, at 5:00 pm.

Aug. 30 (Sun.): Golf - 18 holes at Mountain View, 10 am.

Sep. 6-13: Cycle Oregon & Candlelighters "Ride-for-a-Child"

Sep. 20 (Sat): Mt. Hood Heritage day at Mt. Hood Museum, Govt. Camp

Oct. 4 (Sat.): Friends of Forest (Meadows)

Oct. 25 (Sat): Warren Miller movie

Nov. 15: Pray for Snow Party at Charlie's, Government Camp.

Mt. High

Golf !

Mt. High



Through the summer, we'll play 9 holes twice a month on weekdays, and 18 holes once a month on a weekend.

If you want to play, please call **Cal Eddy** at least 7 days in advance. Cal's phone is 503-805-8606, or e-mail Cal at baebaw@ccwebster.net. The dates are:

Aug. 21 (Thur.): Golf - 9 holes at Claremont, at 4:50 pm.

Aug. 28 (Thur.): Golf - 9 holes at Sandelie, at 5:00 pm.

Aug. 30 (Sun.): Golf - 18 holes at Mountain View, at 10 am.

Mt. High

Picnic

Mt. High



August 10, (Sunday). Click here for [map](#) on our website.

12 (noon) - 1 pm -- Softball

1:00 pm -- Food will be served.

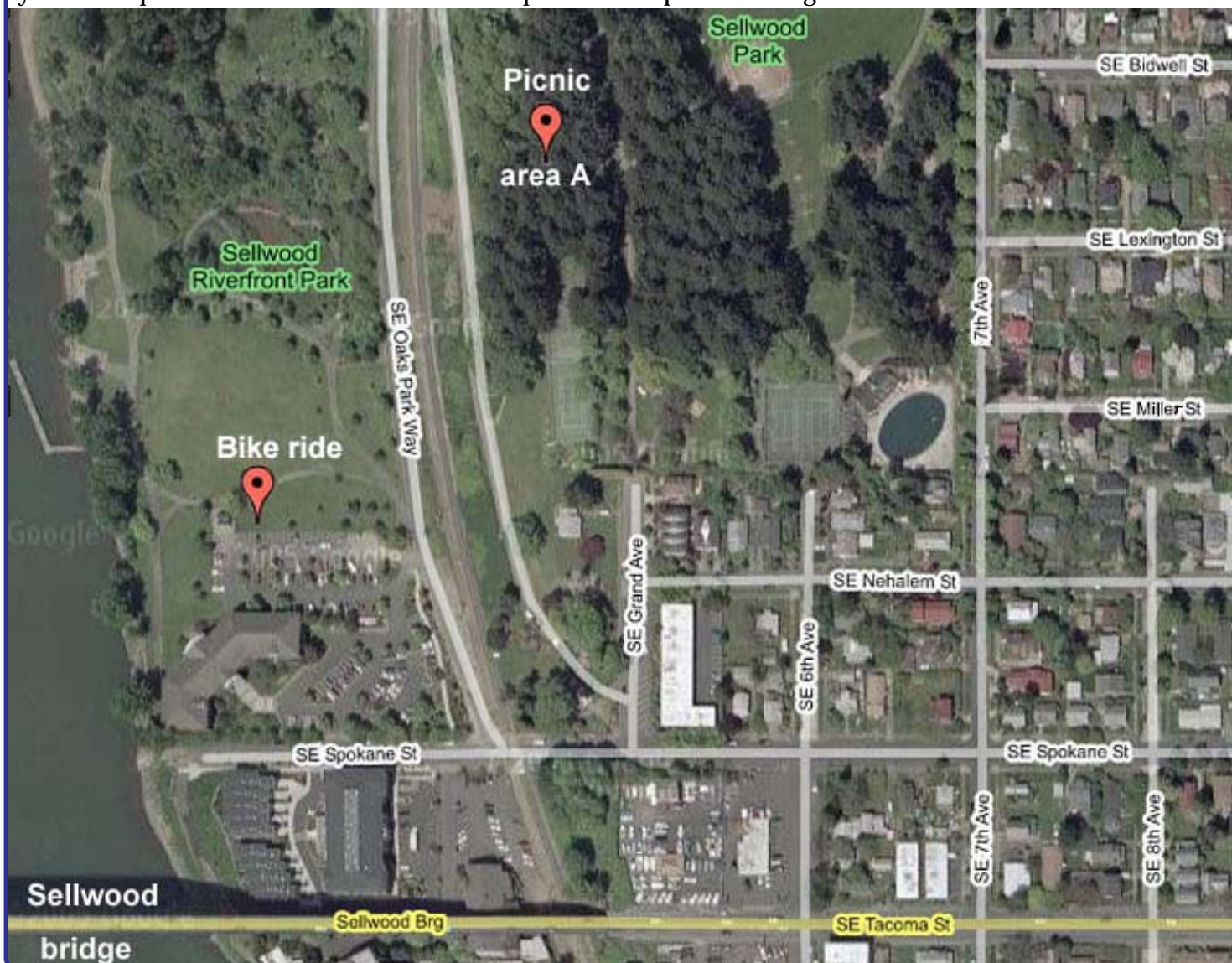
Place: **Sellwood Park**, Picnic area A

To avoid any possible conflict with the Providence Bridge Pedal, we've canceled the optional bike ride which normally precedes the picnic, and the picnic will start at noon.

Since the ball-field has already been reserved from 12:00 to 1:00 pm, we'll start off with some softball, and then start the food around 1:00 pm.

A variety of specialty gourmet sausages will be provided by the club, but it's mostly a potluck. So, some food, some drink, and maybe some chairs.

Directions: Immediately after crossing the Sellwood bridge (if coming from the west), turn left onto 6th Ave., and immediately start looking for parking spot. Enter the park on foot by following SE Grand Avenue (from the south), and follow the path for abt. 100 yards. Our picnic area is on the left side of the path. See map. "Not being able to find us" is not a valid excuse!!!



Mt. High

Deschutes River Raft Weekend



Aug 15-17, 2008. This has become an annual tradition for our club. A weekend of rafting and frolicking in the sun on the Deschutes River at Maupin, Oregon.

Contact Gordy: 503-804-8363 or GordyLusk@hotmail.com.

Reservation & payment must be received by July 15. (or don't show up). Cancellation Date is August 1st.

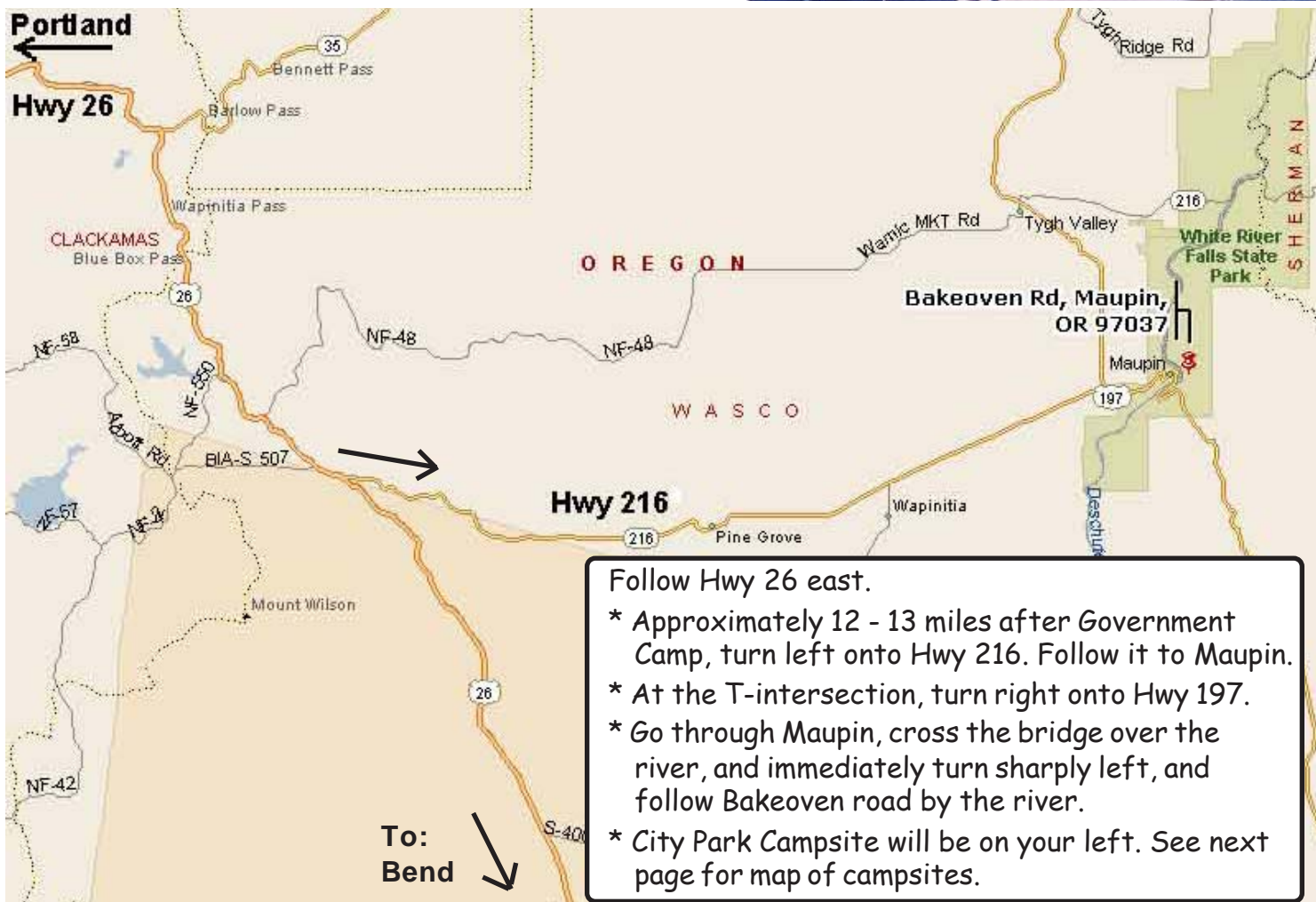
Trip includes:

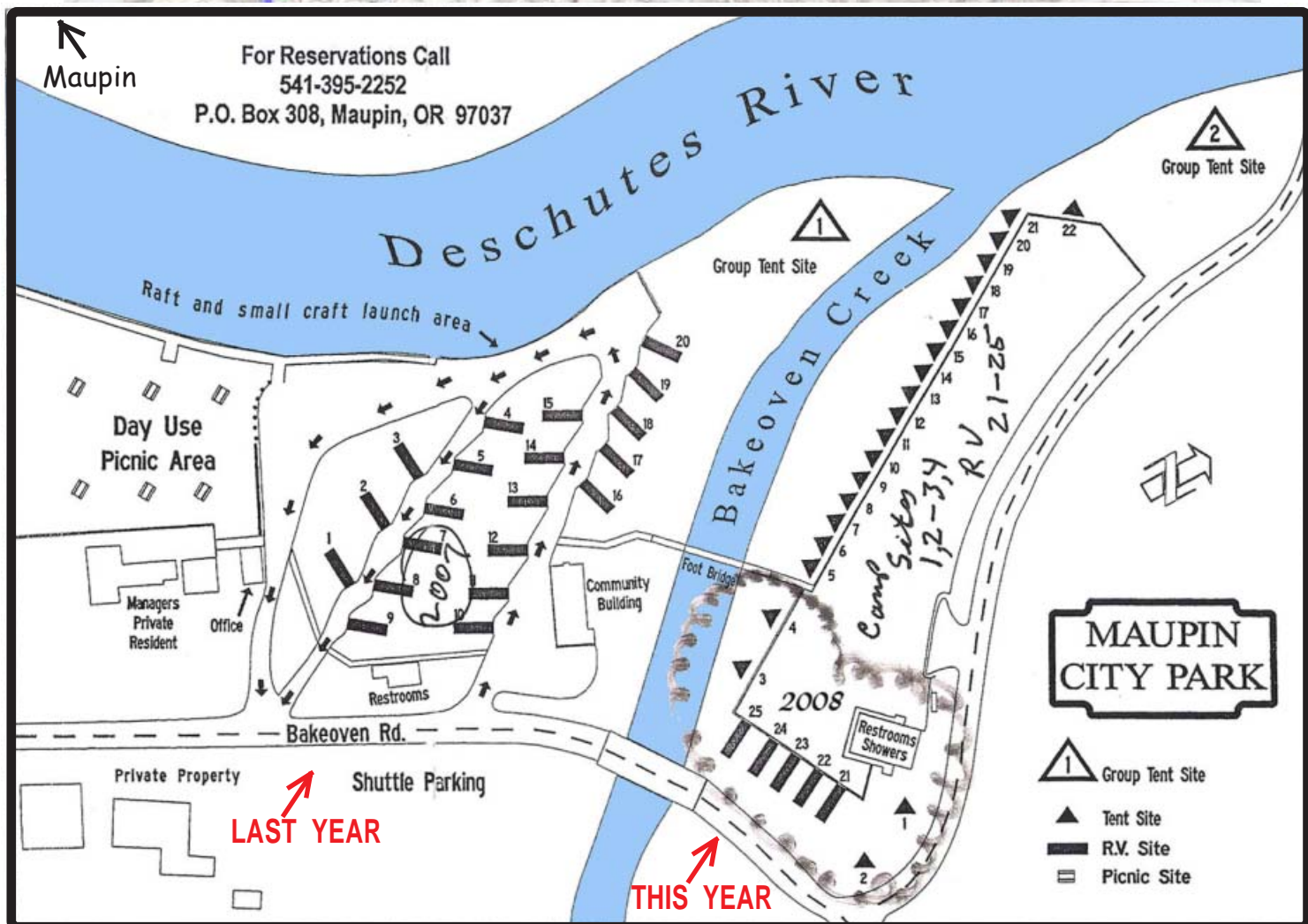
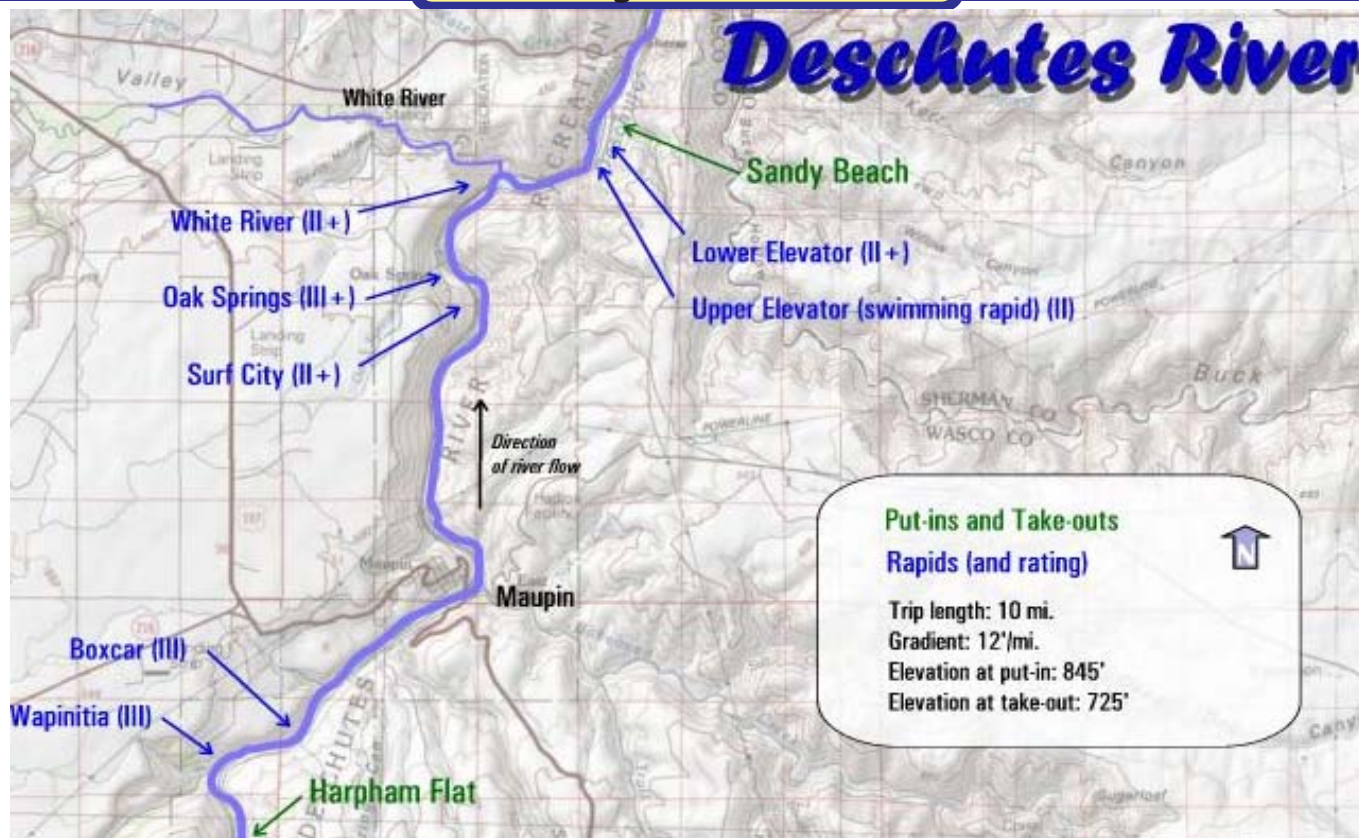
Camping: Thursday, Friday and Saturday night in Maupin City Park. Camp sites at new location (see next page). RV space available for an additional \$20.00 a night.

Rafting: (Row, Paddle or just ride) Friday and Saturday. We'll provide the rafts.

Saturday night dinner: Lou's- Q will cook chicken pork ribs and BBQ beans on Saturday only, but bring a salad, dessert or HDO for Sat. dinner. For other times, bring your own food and drinks. Also, bring quarters for the showers!

Camp, raft, dinner = \$85.00 pp. (Non-members \$100.00) To sign up, please use the Dough Transmittal form, page 11 or print the form from our web site. See the [**Forms**](#) page.





Warren Miller: "Children of Winter"



Oct. 25 (Sat.) Warren Miller's new film, **Children of Winter**, will kick off the winter sports season for the 59th year!

Remember, this movie is our takeoff point for the **Canada Ski Safari**. We'll buy discounted group tickets. We'll have a club **dinner** before the movie.

Warren Miller film premiers are an experience not to be missed! Tickets go on sale in September! Be prepared to send Emilio a check for the group purchase, as soon as we find out the price. The earlier we buy, the better seats we'll get.

Presented in striking High-Definition and narrated by skiing icon Jonny Moseley, this year's film takes you to Japan, Austria, Sun Valley, Iceland, Alaska and more! Check out www.WarrenMiller.com for more info.

Warren Miller: How to get involved



Warren Miller could use your help to promote the movie. Remember that the movie usually stays in town only 2 or 3 days, so it's easy to miss. Here's how you can get involved:

❖ **Warren Miller's Street Team!** Contact marketing@warrenmiller.com, and help spread the word about Warren Miller films by putting up posters and flyers around town.

❖ **Host a Screening of a Warren Miller Film!**

Contact ips@warrenmiller.com to setup your own Warren Miller Event, and raise money for your ski club!

❖ **Cheap Tickets!** Contact marketing@warrenmiller.com for information on Group Ticket discounts.

❖ **Warren Miller Gear!** To purchase DVDs, exclusive apparel, and more, go to warrenmillergear.com.



Mailbox

Q With the rising cost of gas, wouldn't it be better to skip the Ski Safari this year, and wait for a better time and lower prices?

A As Warren Miller used to say, "If you don't do it this year, you'll just be a year older when you do!"

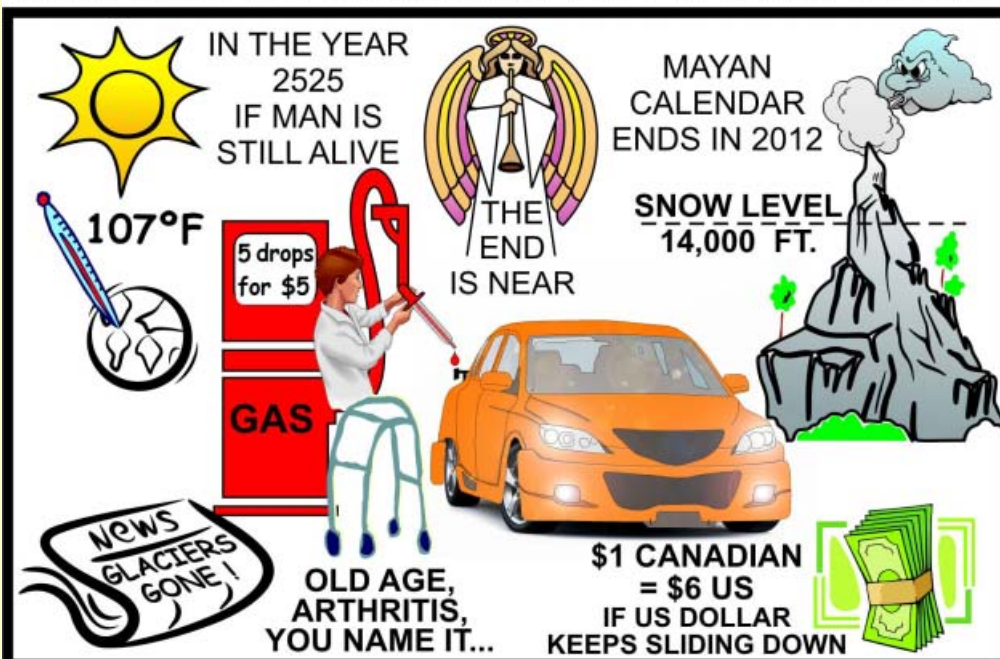
There is no sign that price will go down any time soon, if at all. If \$4 a gallon sounds like a lot, what will we do when gas goes up to \$9 per gallon? Some day we'll fondly remember the "good old days" when a gallon of gas was only \$4.

Also, if the US dollar continues to lose value in relation to the Canadian dollar, vacations in Canada will continue to get more expensive. For all we know, this might be our last chance to visit Canada while it is still affordable.

In fact, how do we know if we'll even be alive the following season? So, better go ski Canada while we still can. We are not sure if Heaven has any ski-in/ski-out lodging, but Canada does, for sure!

NOTE: As soon as we find out the prices for this year's show, we'll start collecting money for a group ticket purchase. Admission may be expensive, but everyone gets 7 free lift tickets!

THREATS TO SKIING IN THE NEAR FUTURE



IF YOU DON'T SKI IT THIS YEAR, YOU NEVER WILL

Winter Trips

While you are enjoying your summer, little gnomes and fairies are busy working on upcoming trips.

Start planning now.



The following pages are trip summaries. More info will soon be posted on our web site:

www.mthigh.org/Trips.htm

If you travel to Canada or Europe, you will need a passport. See:

www.mthigh.org/Articles/Passports.htm

NWSCC

Bachelor Blitz



Dec. 12-14, 2008. NWSCC trip. This will be a revival of an old tradition. During the 80s and 90s, local ski clubs used to run several busloads of people to Mt. Bachelor, to usher in the new season with a big party. But, the last Blitz was held in December 2001.

Now, seven years later, it's time to dust off our skis, re-visit Mt. Bachelor, and ski and party hard. It's time for another Blitz! Stay tuned for details.



NW Ski Areas Map

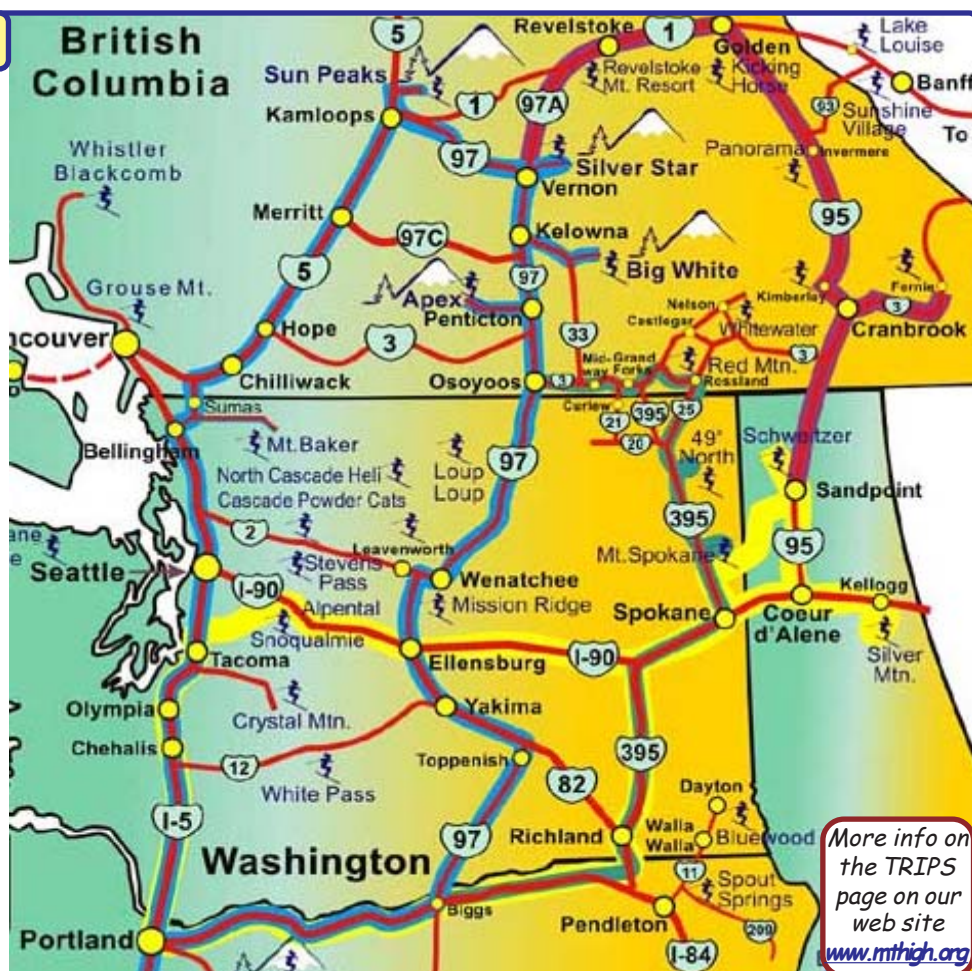


Use this map for basic orientation for any of our upcoming trips, especially the Canada Ski Safari.

After doing the classic 5-day safari to Canada for 4 years in a row, it's time to try something new, such as:

Instead of driving up I-5 and returning down Hwy 97, let's go up Hwy 97, visit **Silver Star** and **Big White**, and then move further east and come down Hwy 95, visiting **Kicking Horse**, **Panorama**, **Kimberley**, **Fernie**, and **Schweitzer Mt.**

Rosie says: "I was talking to a girl in the coffee shop at Silver Star, and she mentioned skiing **Kicking Horse** and **Fernie**. She said she's skied there on weekdays and was surprised she only saw 5 - 10 other skiers on the slopes all day. She said they are great ski areas. So, that would be a great option for a future ski trip! Looking forward to it!"



More info on the TRIPS page on our web site
www.mthigh.org

Canadian Ski Safari: Columbia River valley**Nov. 28 - Dec. 7, 2008 or****Dec. 7 - 16, 2008.** Depending on snow conditions.

NEW & IMPROVED. This 9-day road trip is a Canada sampler. It's really just a week, with both weekends on either end. It can be shortened to the usual 5 days.

We can all start together, and separate at some point.

We did the **classic 5-day trip** around Canada for 4 years in a row. You can still do the same, if you wish. You can find detailed instructions, phone numbers, addresses, maps, etc. on our web site. See the ARTICLES page (and then look for Canadian Ski Safari) at: <http://www.mthigh.org/Articles.htm>.

But, let's do an even better, extended ski safari this time.

We planned this for last year, but we were foiled by the late arrival of snow, which pushed us east to Banff.

After visiting Silver Star, we'll follow the Columbia River upstream, to its source. So, let's call this the **Columbia River Ski Safari**. See [map](#) on our web site.

DAY 0 (Friday, Dec. 7): Not counting this as a real day, because people can still work this day, and drive out of Portland after work. Just drive for about 4 or 5 hours, to Ellensburg or Wenatchee (on Hwy 97). Or to Bellingham (on I-5).

DAY 1: (Sat., Dec. 8): Spend at least part of the day skiing somewhere like [Mission Ridge](#) or [Loup Loup](#), or [Apex](#). Then drive the rest of the way into Canada. Alternatively, if we go up I-5, we could ski [Mt. Baker](#), or [Grouse Mountain](#) (with great views of Vancouver).

DAY 2 (Sun., Dec. 9): Ski [Big White](#), or maybe [Sun Peaks](#) (if we drive up I-5.)

DAY 3 (Mon., Dec. 10): Ski [Silver Star](#). We'll all come together here, even if we come from different directions. From here on, there is only one road, Hwy. 97C, toward Revelstoke. It's about 2.5 hours of driving from Silver Star to Revelstoke Mt.

DAY 4 (Tue., Dec. 11): Ski [Revelstoke Mt.](#), a brand new ski resort, which opened in 2007 with 4,500 vertical feet, but will offer a total of 6,000 vertical feet this year, by far the largest vertical in North America.

DAY 5 (Wed., Dec. 12): Ski [Kicking Horse](#). Over 4,000 vertical feet in a single 10-minute gondola ride. 4 bowls. Great views of the Columbia River valley below. The

on-mountain village is still rudimentary. We might want to stay in the town of Golden, only 15-20 minutes below the ski area.

DAY 6 (Thur., Dec. 13): Ski [Panorama](#). Just 1.5 hours south of Golden, and just 11 miles from the town of Invermere. Panorama is big. 4,000 vertical feet, 2,847 skiable acres. 8 lifts, of which 2 are high speed quads.

DAY 7 (Fri., Dec. 14): Ski [Kimberley](#), in the Purcell Range. Just an hour south of Invermere is the charming Bavarian style town of Kimberley. The ski area is just a mile or two above town, with its own mountain village. This is B.C.'s sunniest ski resort. 2,465 vertical feet, 1,800 acres, served by 1 high-speed quad on the front, and a triple and a double chair on the back. The back side has lots of tree skiing.

DAY 8 (Sat., Dec. 15): Ski [Fernie](#), a big area, offering 2,500 acres, 2,800 vertical feet, including 5 enormous bowls. 10 lifts (2 high-speed quads), 9 on-hill restaurants.

DAY 9 (Sun., Dec. 16): Just drive home, or if we still have any energy, ski [Schweitzer Mt.](#) with 2,400 vertical feet and 2,900 acres, or maybe visit [Silver Mt.](#) (ID) or [Mt. Spokane](#) (WA), depending

on how we feel. That's the beauty of this trip!

DRIVING HOME. Even if we ski till 4 pm on the last day, we could still be back in Portland by midnight. But, if we are tired, we could ski only half a day, and arrive home earlier. Or, stay the night at Coeur d'Alene or Spokane, and drive home on Monday.

Or, we could skip one of the ski areas above, and move the whole schedule up by a day. Thus, we could be at Schweitzer or Silver Mt. on Saturday, and then just drive home on Sunday.

We could even ski a day at [Bluewood](#) in south-east Washington (straight south from Spokane). It's sort of on the way. But that would be a 10th day. Probably too much. Still, there's a surprising amount of varied terrain, 1,125 vertical feet, served by 2 triple chairs.

This is a very informal trip. Just drive up, possibly carpool, and let's ski! If we share lodging and gas expenses, the trip can be quite affordable.

For details about this road trip, and for help coordinating the carpooling, contact **Emilio Trampuz** at: 1-503-378-0171, or Emilio2000@earthlink.net.



Great views from the top of Gem Lake lift at Big White

FWSA

Far West Ski Week: Big Sky (MT)



Jan. 24-31, 2009. The biggest ski party in the West is the annual Far West trip, involving dozens of ski clubs throughout the Western States.

Big Sky and adjacent **Moonlight Basin** offer lots of terrain.

Price ranges are from \$900 to \$1485 depending on lodging selection. *Price does NOT include air or ground transportation.

Price includes 7 nights lodging (double occupancy) and the FWSA amenity package. (FWSA amenities packages will NOT be sold separately)



The FWSA amenity package includes:

- | | | |
|----------------------|------------------------|---------------------------|
| * Registration | * Welcome Party, | * Pub Crawl, |
| * 5-day lift ticket, | * Mountain Picnic, | * 3 Races (optional); |
| * Après Ski Party, | * Council Night Event, | * Farewell Awards Banquet |

Send in a \$100 deposit. Make check payable to **Northwest Ski Club Council**, P.O. Box 1915, Portland OR 97207. Contact: **Barbara Bousum**, 503/224-3584, BBousum@gmail.com.

Mt. High

Schweitzer Mt. (ID) + 49° North (WA)



Feb. 18 - 22, 2009. 4 days/4 nights. Leave Wednesday around noon. Return on Sunday by 9 pm. 3 days and nights at Schweitzer, plus 1 day at 49° North.

Schweitzer Mt. Larger than many Colorado resorts, with 2,900 acres and 2,400 vertical feet. It has a 6-passenger hi speed lift, 2 hi speed quads, 1 triple, 3 double lifts. Open bowl and tree skiing. Long cruisers. Ski-in/ski-out lodging. See snow-ghosts & ghost of Mr. Schweitzer.

49° North has 2,325 acres, 1,850 vertical feet, served by 1 quad and 4 double chairlifts. You can ski the 7 Deadly Sins (aka Cy's glades), and ring the mountain god's bell for good luck. Long cruisers. Lots of tree skiing.

Lodging: 3 nights at Selkirk Lodge in on-mountain village at Schweitzer, hot tub, heated pool, restaurant, ski-in/ski-out. After leaving Schweitzer, we'll spend a night in a motel in Newport (WA), an hour from Schweitzer and less than an hour to 49° North. Motel has high-speed internet, cable TV, and restaurant.

Transportation. We'll have a chartered bus all the way from Portland. If you prefer, you can fly to Spokane, and connect with us either in Spokane or at Schweitzer Mt. Flight is not included.

Price: Sliding scale, depending on the number of participants. For **30** people, price = **\$677**. For each additional 2 people, price for everyone drops by \$7. For 40 people, price = \$641. Price for those 65 or older will be **\$20 less**. Sorry, that's all the lift ticket discount we can get.

Included: 4 nights lodging, 3 breakfasts (at Schweitzer), 4 lift tickets, and bus transportation.

Payment schedule: Initial deposit = \$100.

2nd deposit = \$230 additional by Nov. 10.

Remaining sum (approx. \$330 or less, depending on # of participants) by Jan. 15, 2009.

Use [Dough Transmittal form](#), p.11. Note: No cancellations in the last 30 days.

Contact **Emilio Trampuz** at: 1-503-378-0171, or Emilio2000@earthlink.net.

Mt. High

Crystal Mountain (bus trip)

Mt. High

March 13-15, 2009. Our annual **Mountain High weekend bus trip.**

2 nights/2 days. We leave Friday around 5:00 pm. Lots of fun on the bus - this is the best way to get to know other club members! We'll return Sunday by 8 pm.

Crystal Mountain is the largest ski area in Washington with 3,100 vertical feet of skiing, with over 50 named runs. There's everything from gentle groomed cruising



Linda

runs for beginners to challenging steeps - backcountry, glades, chutes and unbelievable black runs for the more adventurous. This is why SKIING Magazine voted Crystal Mountain the #7 top mountain in North America. There are 2 six-pack hi-speed lifts, 2 hi-speed quads, 2 triples, and 4 doubles.

New since our last trip to Crystal Mountain in 2005 is the Northway lift, a double chair that moves at a faster than normal rate, providing access to 1,000 acres of skiing and increasing Crystal's lift-served terrain by 77%. There are now 2,300 acres of lift served terrain, plus 500 acres of backcountry.

We'll again stay at the Best Western Park Central hotel in the center of downtown Enumclaw, 45 minutes from the mountain, with easy access to a variety of restaurants and bars. Breakfast is provided for hotel guests.

We'll keep the cost down by using a sliding scale. **The more people, the lower the price** (\$3 less for every additional 2 people). Bring all your friends and save money! Price (with a minimum 28 people), is **\$220** for the bus trip, 2 nights' lodging, 2 breakfasts, and one lift ticket. The reason for only one lift ticket is that on Sunday, March 15, Crystal Mountain is allowing all NWSCC club members to buy tickets at half price - only \$30 - but you have to go to the ticket window yourself and show your NWSCC card (i.e. your club membership card; you'll get it when you re-join for 2008-09).

Use **Dough Transmittal form**, p.11, to send **\$100 deposit**, due by **November 30**. Full payment due by February 15, 2009 (you will be told the balance due - the trip price could be as low as \$205 (if we get 40 people!)). No refunds after February 15 unless you can fill your spot.

Contact **Linda McGavin** at (503)652-2840 or e-mail Trips@mthigh.org.



Bruce

Mt. High

Lake Tahoe / Heavenly



Harry & Lisa at Heavenly last year

Mar. 28 - Apr.2, 2009 A 5-day trip (Saturday - Thursday).

Skiing: Heavenly is our main destination, with 4,800 acres and 3,500 vertical feet, and slopes in both California and Nevada. But, we'll visit other places too.

Lodging: Lakeland village condos, 1-4 bedrooms, full kitchen, hot tub, heated pool, sauna, free shuttles, 1 mile to the lifts.

Fly to Reno (on your own), or drive, or rent a car. Janice can help you carpool with others. You can also link this trip with the Far West Championships at Northstar, which start the day after this trip ends.

Price: Approx. **\$400** (yet to be finalized) includes:

- * 5 nights lodging, in shared condo. * Breakfast
- * 2 of 3 days lift ticket to Heavenly * Wine & cheese welcome party,
- * Shuttle around town and to Heavenly gondola or tram.

Contact **Janice Jessen**: jessen@iinet.com

Send \$100 deposit. Use **Dough Transmittal form**, p.11. Note: No cancellations in the last 30 days.



Mailbox

Q I am interested in the Far West trip to Big Sky. Where can I find more info about it? How can I get in touch with the trip captain?

A Well, let us count the ways:

1. This newsletter has had a blurb about the Big Sky trip in both the June and July issues (#90 and 91).

2. There are several links to the FWSA web site from our club's site. For example, click on the FWSA logo in the menu column. Or click on the FWSA link on the Member Benefits page. By the way, in the menu column, you can also click on the NWSCC or the PACRAT logo, to go to their web sites.

3. On our TRIPS page, there's usually info about NWSCC and FWSA ski trips. This just wasn't ready yet in June and July, but it should be there by the time you read this. See: www.mthigh.org/Trips.htm.

C This is a comment, not a question. The photos of the board members on page 3, Lift Lines 91, make our club look so vital! - Violet Anderson

A Thanks for the compliment. Yes, our club leaders do exude vitality, don't they?

C The question was asked whether we should go to Schweitzer or Fernie. I don't really care if we go somewhere else. I always have a GREAT time with Mt. High. I'd follow you guys anywhere!! - Terry Swan

A Thanks Terry. We are heading for the Sheer Terror run, off of Suicide Ridge next! But, seriously, it looks like Schweitzer is definitely happening this year, and even the potential conflict with a PACRAT race has been avoided. And we have Fernie on our list for next year!

Q The article about neck injuries (Lift Lines 91, July issue) made me think twice. Wouldn't it be safer to not wear helmets on the slopes? - Jim

A Well, that's a tricky question. You could get hurt with a helmet, and you could get hurt without a helmet. There is some risk involved either way. The final choice must be a personal one. Only you can decide for yourself what amount and what type of risk is acceptable, and which is the lesser of two dangers.

Will someone's skis ever hit you in the head? Or will the helmet ever get snagged on something and twist your neck (or even just exert extra leverage in a simple fall on your face)? Nobody knows. Will someone's skis ever hit you in the shins? Should you wear hard-plastic shin protectors? Ultimately, it has to be your decision. Whatever happens, don't blame it on us!!!

Candlelighters' Ride-for-a-Child

...because kids can't fight cancer alone!



Candlelighters™

For Children With Cancer

Helping Families in
Oregon and SW Washington

"It is better to light one candle than to curse the darkness"

Each year, many Mountain High members participate in the Candlelighters' cycling fundraiser, Ride-for-a-Child, in the week long Cycle Oregon, Sept. 6-13, 2008

Candlelighters is an organization that serves families and children in Oregon and Southwest Washington that are impacted by childhood cancer.

If you'd like to participate, see the [rider information packet](#) about the Candlelighters and the Ride-for-a-Child team on the Mt. High [EVENTS](#) page.

For further info, please contact

Dick Hartung

Candlelighters RFAC committee

dhartung@lhlhomes.com or 503-348-3000.



Friends of the Forest 2008 Events



October 4, 2008: Mt. Hood Meadows.

Skiers and nature lovers will join forces to harvest native seed to be used to restore native plants on the slopes.

Help keep our forests clean and healthy. Add new trails, remove litter, plant new trees. Our members Greg and Violet Anderson have participated in previous events, and will do so again this year.

Included are give-aways and a nice lunch. More info at: www.friendsoftheforest.org/news/news-68.html.



Airline adds luggage surcharge

Delta Airlines announced in late July that they will charge **\$50** each way for a traveler's second checked piece of luggage (\$100 round trip). As of August 5, no other airline had joined them in assessing this charge.

Newsletter Options

If you receive the newsletter via email, you have the option to either:

- A) Recive the complete PDF file**, as an email attachment or
B) Receive a short email containing a link to the PDF file on our web site.

The download time is the same, since it is the same PDF file. With **option A**, the wait is up front, when your email is dowloaded to your computer.

With **option B**, you first get a short email, asking you to click on the link. The wait time will happen only if and when you click on that link.

If you wish to switch, let [Emilio](#) know your preference.

Mountain High Meeting

Usually 1st Tuesday of the month.

Sep. 2 (Tue.): Open to all who want to get more involved with the club. This is an organizational meeting to plan future events.

Gather at **6:00 pm**. Start at **6:30 pm**.

Location: **Round Table Pizza**, 10070 SW Barbur Blvd., near Capitol Hwy.

Mountain High snowsport club contacts:

President: Terry White, H: 503-781-4558,
Vice-President: Gordon Lusk, H: 503-804-8363,
Secretary: Diane Zhitlovsky, H: 503-244-3392,
Treasurer: Sandi Dykstra, H: 503-629-0177,
Membership Director: Elaine Bock, H: 503-245-7009,
Race Director: Bruce Ellison, H: 503-697-7892,
Newsletter Editor: Emilio Trampuz, H: 1-503-378-0171,
Social Activities: Jaxine Harris, H: 503-692-9719,
Golf: Cal Eddy, H: 503-631-3115,
Mid-week skiing: George Yun, H: 503-697-3055,
NWSCC Rep: Debbi Kor, H: 503-682-1563,
Trip Directors: Linda McGavin, H: 503-652-2840,
 Janice Jessen, H: 503-636-0687,

TWhite223@msn.com

GordyLusk@hotmail.com

Dianezhi@hotmail.com

sandid@aol.com

SeawitchPdx@aol.com

Yuffiet@comcast.net

info@mthigh.org

JaxineAH@msn.com

W: 503-805-8606, baebaw@ccwebster.net

boar2m@msn.com

W: 503-988-5138, ijustwannarun@aol.com

Trips@mthigh.org

jessen@inet.com

General info:

info@mthigh.org

Web site:

www.mthigh.org

DOUGH TRANSMITTAL FORM

Mail check payable to: Mountain High Snowsport Club, PO Box 2182, Portland, OR 97208.

PLEASE PRINT CLEARLY: ☐ New membership ☐ Renewal

Name(s): _____

Address: _____

Phone (Hm): _____ Phone (Wk): _____

Email (Hm): _____ Email (Wk): _____

Email Preferences: - Newsletter (once a month): ☐ yes, link only ☐ yes, complete file ☐ no
☐ No changes - Club news & events (between newsletters): ☐ yes ☐ no
 (same as last year) - Other ski news (NWSCC, FWSA, ski areas, trips...): ☐ yes ☐ no
 - Is it OK to share your email address with other club members? ☐ Yes ☐ No

Please take my money, and apply it toward the following Ski Club fun stuff:

Deposit? Paid in full?

☐ **Summer Membership** (May. 1 — Sept. 30, 2008): Total: \$10 per person \$ _____

☐ **Annual Membership** (Oct. 1, 2008 - Sept. 2009): Single (\$25); couple (\$40) \$ _____

☐ **PACRAT Racing (2008/09)** Total: \$85 Team name: _____ \$ _____

☐ **Schweitzer** (Feb. 18-22, 2009) 1st dep.: \$100, 2nd dep.: \$230 by Nov. 10., Total = \$677 \$ _____

☐ **Crystal** (March 13-15, 2009) Deposit: \$100 by Nov. 30., Total = \$220 by Feb. 15. \$ _____

☐ **Heavenly** (Mar. 28-Apr. 2, 2009) Deposit: \$100 by Nov. 30., Total = \$400 by Feb. 28 \$ _____

☐ **Other:** _____ \$ _____

Comments (For whom you are paying. Roommate requests,...): _____

Signature(s): _____ Date: _____

Signature(s): _____ Date: _____

Whereas the Mountain High Snowsport Club ("Club") is an organization of fun loving ADULTS whose events are organized by members who volunteer their efforts for the enjoyment of their fellow members and friends, please remember when I participate in Club events I do so at my own risk. Sporting activities, indeed, any activity, includes inherent risks. I will evaluate my own abilities and responsibilities and join in the Club fun as a responsible and considerate adult. I will not hold the Club or any Club officer liable for the consequences of my decisions and my behavior. The bottom line is, stuff just happens sometimes and the club volunteers are not to be blamed for helping us have fun. Besides, the Club has no assets, except for a leftover banner, some balloons, or a couple of empty beer bottles with the Club's name on them.

Club membership = 222 Newsletter Distribution

The Aug. 2008 issue is posted on our web site, and also:
266 copies sent via email (as PDF files)
23 paper printed copies sent via US Mail.
 Copies are sent to potential members, other clubs, etc..
Please help us minimize the cost of mailing paper copies.
Send your email address to: info@mthigh.org.

Time changes!

Please note the following time changes:

Monthly meetings: Every first Tuesday (See page 11).
 Moved half an hour earlier, from now on.

Socialize: 6:00 pm

Formal meeting: 6:30 pm



Picnic. The picnic at Sellwood Park, Aug. 10, will start around noon this year, and we'll skip the bike ride, because of possible conflicts with the Bridge Pedal event.

See page 2. **12 (noon) - 1 pm -- Softball**
1 pm -- Food will be served



Emilio Trampuz
 Mountain High Newsletter editor
 4742 Liberty Rd. S., #296
 Salem, OR 97302

Please check our web site,
www.mthigh.org
 for updates.

Sports Instruments "Alta" - Altimeter Watch

In the September 2007 issue of Lift Lines, we wrote about the perfect ski watch, which still doesn't exist. The ideal watch could survive a shipwreck and a few years on a desert island, with long lasting batteries or solar powered, and could be used both in the mountains and under water.



While we wait for the perfect watch, how would you like something that's pretty darn good and costs only \$20? It's not a toy. This is a \$160 watch that has been discontinued, and retailers are eager to dispose of the remaining inventory. REI has it on closeout for \$59.93, but others are sell-

ing it for only **\$19.99**. Check out a bike shop called "**Bike Nashbar**", at www.nashbar.com or 1-800-627-4227.

The watch is "**Alta**" from **Sports Instruments**. The altimeter is accurate to within 3 feet. It displays the number of runs skied, the total vertical accumulated, the maximum vertical reached, the rate of ascent/descent, and is also a regular watch with an alarm. There is no compass.

OK, so it's not perfect, but where else can you get a brand new watch for the price of replacing the battery? Any jeweler can help you install a new battery in the Alta.

