



Lift Lines

= No. 247 July 2021 =

Mountain High Snowsport Club, PO Box 2182, Portland, OR 97208



Editorial

Help Mt. Hood Meadows upgrade its Mt. Hood Express quad to a 6-pack. Write a letter (paper or online) to the Forest Service. See page 5. Do it before 7/12/21.

Summer Activities: We are planning to have one hike, one bike ride, and one social event per month during the summer. And also some other activities too from time to time, like our regular annual highway cleanup. See page 2.

Next Winter: Our big trip next winter will be to **Whitefish Mountain, Montana**. We did this in February 2020. Let's do it again in March 2022. See page 7. Those driving to Whitefish could leave a day or two earlier, stop in Missoula, Montana and ski at Lost Trail for a day. It's on the Indy Pass

Where else might you ski next winter? Check out the **comparison chart** of season passes on pages 9 and 10. Note the recent changes to the Indy Pass.

Elections and Club Officers. We need to hold an election for our **President**, and **VP of Membership**. If YOU, or someone you know, is interested in being a part of the Mt. High Board, ie. the the Decision Making End of this club, please let us know. Contact any of the current officers. See page 11.

SKI TRIPS: Due to Covid, it is still not safe to pack a bus full of people for several hours, so we are not planning any bus trips yet. So, where else other than Whitefish could we go next winter? Maybe drive to one of the ski areas on the Indy Pass? Or part of the Powder Alliance? Or both? For example, White Pass is on both passes. Shall we drive up there for a day or for a weekend - with lodging in the town of Packwood?

JAPAN: Interested in a weeklong ski trip to Japan? See page 8.

Indy Pass gets cheaper

The Indy Pass has grown from 56 to 68 ski areas. For just \$279 you can get 2 free days at all 68 of them. And if you have a season pass to any of them, buy the Add-on Indy for **\$90 less**. Some of the western areas:

- [Powder Mountain](#) - Eden, Utah
- [Brundage Mountain Resort](#) - Idaho
- [White Pass](#) - Washington
- [Lost Trail Powder Mt.](#) - Montana
- [49 Degrees North](#) - Washington
- [Hoodoo Ski Area](#) - Sisters, Oregon
- [Mt. Ashland](#) - Ashland, Oregon
- [Mt. Shasta Ski Park](#) - California
- and 17 more! (See page 10)

Note the color code.
Our club is blue.

2021 CALENDAR

Blue: Mountain High events
Maroon: NWSCC / FWSA / Multi-club
Black: General interest events

JULY

July 15 (Thur.) Happy Hour at The Ram in Wilsonville, starting at 4 pm.

July 24 (Sat.) Burnt Bridge Creek bike ride

July 24 (Sat.) Mt. High BBQ at Debby's

July 26 (Mon) Mt. High Board meeting

July 30 (Fri.) Salmon River West Hike

AUGUST

Aug. 7 (Sat.) History Happy Hour:
Mt. Hood Steiner Cabins

Aug. 14 (Sat.) Steiner Cabins Tour
Tour 8 cabins in Rhododendron

Aug. 21 (Sat.) Mt. High Lunch at Edgefield -
11 am to 3 pm.

Aug. 23 - 27 Kayaking trip Pend Oreille River

OCTOBER

Oct 7- 10 FWSA Convention, San Diego

NOVEMBER

Nov. 19- 21 Snowvana / SkiFever Show
The merged shows.

Mt. High

Summer Fun



Sign up for next winter's trips



Hiking



Biking



Social Activities

Mt. High

TGIF - Happy Hour - A word from Debbi Kor

June 17 (Thur.). 5 pm.

In an effort to get some of our club members together for a night out, we had a wonderful Happy Hour on June 17th at Oswego Grill in Lake Oswego. A beautiful evening to sit outside, sip some adult beverages and gather with good friends. We had 14 people turn out for our first Happy Hour of the season. What a great way to re-introduce the first of many "social hours".

Come to the next one, Thursday, July 15, starting at 4 pm at The Ram, in Wilsonville.

Mt. High

Trillium Lake bike ride

June 20, 2021. (Saturday)

A very pleasant bike ride. We covered about 12 miles and had a picnic at the amphitheater by the lake, where we watched some bald eagles fishing.

We expected 10 people, but 2 cancelled so only 8 of us participated in this ride.

On the way back from the lake to Government Camp, we followed a mountain bike trail that we've never done before as a group. It was a pleasant trail, and we determined that it's easier to follow it from the lake northward rather than toward the lake (southward).

Overall, everyone was pleased with this ride.

Don't miss the next one on July 24, on the Burnt Bridge Creek Trail.

More pictures on the PHOTOS page on our website.



Mt. High

Highway Cleanup



Debbi. (Photo by Emilio)



Kay. (Photo by Violet)

June 26 (Sat.). 10 am - Noon.

Only 4 people showed up this time. Violet found some money again! Lucky one!

Mt. High Snowsport Club is in need of a few more volunteers to help out with the twice-yearly Highway Clean-up. For new members who are not aware of this activity... typically in June and October, one Saturday morning is set aside for our members to assist in cleaning up a 2-mile stretch of Highway 26, on Mt. Hood, from Mirror Lake to the lower end of Government Camp.

We need around 8 people to assist with this activity, and for your efforts, Mt. High will buy your lunch. Next Clean Up day will be in October or November. Please contact **Debbi Kor** to volunteer: ijustwannarun1@comcast.net.

Mt. High

Bicycle Ride - Burnt Bridge Creek Greenway



Photo from Emilio Trampuz

July 24 (Saturday). 2:30 - 5:30 pm

Would you believe that there is a fantastic greenway belt with a paved bike trail in the heart of Vancouver, WA?! You've gotta see it! Harry & Lisa will lead us.

Develop a healthy appetite before the BBQ at Debbi's? Join us on this bike ride! After the ride, we'll head straight for the BBQ.

The trail is about 8 miles long in one direction, or 16 miles there and back. It passes through several parks and connects a variety of trails

We'll start the ride from **Meadows Home Park**, part of the way into the trail, and then we'll ride both West from there (5.2 miles one way) and ride East (2.6 miles one way). There is a public bathroom on the trail about half a mile east of our starting point. Also, there is a bathroom at the west end of the trail, and one more somewhere in between.

MEET at 2:15 pm at the **Meadows Home Park** on **East 18th** and **General Anderson Ave.** There is a parking lot just for access to the trail and its access is from General Anderson Ave.

2:30 pm: We'll start the bike ride. We'll ride both east and the west of the starting point.

5:30 pm: End of the bike ride. We'll return to the starting point, with about 30 minutes left to put away our bikes and to drive over to Debbi's for the BBQ. (See next announcement below.)

Please **RSVP** if you are coming to the bike ride. Contact **Lisa Scribner**, lscibner98@yahoo.com.

Also **RSVP** separately to **Debbi** for the BBQ at: ijustwannarun1@comcast.net or (503) 314-7078.



Mt. High

BBQ at Debbi's



July 24 (Saturday). Social gathering at Debbi's place. Starting at 6 pm.

This will be a combination of a backyard BBQ, with hints of a Seafood party, because salmon will be served, and also elements of our picnic because we'll also have sausages on the grill as well as a bike ride preceding it.

Debbi is treating us to all the grilled items. We are her guests. No payment is involved. But you can bring a **side dish** or **dessert**, and **BYOB**.

Location: Debbi Kor, 8513 NE 149th Avenue, Vancouver WA 98662. See [Google map](#).

To develop a healthy appetite for this, join some of us in a bike ride along the Burnt Bridge Creek trail, a hidden beauty in Vancouver. We'll gather around 2:15 pm and start the bike ride at 2:30 pm. See above.

Please RSVP to **Debbi Kor** at ijustwannarun1@comcast.net or (503) 314-7078.

Mt. High

Hiking - Salmon River West

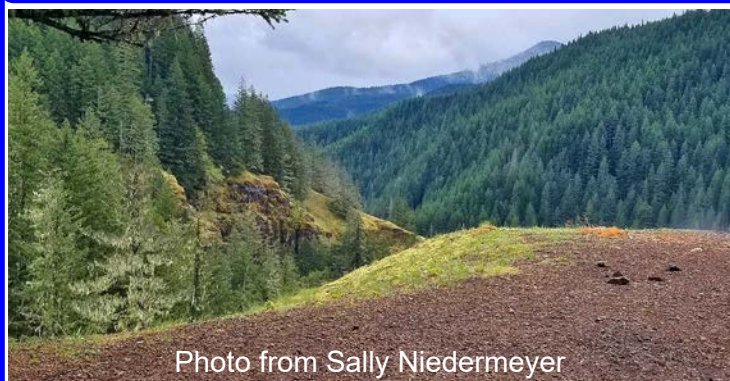


Photo from Sally Niedermeyer

July 30 (Friday). [Salmon River West hike](#). 9 am

A moderate 7.8 miles round trip to the first view point and back. Elevation gain = 950 feet.

The trail is out and back (not a loop) thru dense rain forest. The entire trip is about 4 hours.

The trail follows Salmon River through old growth rainforest, then climbs to a great viewpoint of the vast Salmon River canyon. We'll have a picnic lunch there.

Parking at the trailhead requires either a NW Forest

pass or an Interagency pass. like the America the Beautiful pass.

MEET at 9 am in the parking lot of the Zig Zag Ranger Station. It will be on your right off of highway 26 immediately after Zig Zag Inn in Zig Zag, which comes right after Welches.

NOTE: Parking is limited at the trailhead. That's why we are meeting in Zig Zag first. The trailhead is about 3 miles down Salmon River Rd from Subway. 9 am is a great meeting time as this can be a popular hike so we should meet early to avoid the crowds.

Bring food and water.

After the hike, we can do an informal social at Michele's house just 3 miles away, unless people want to go to a restaurant. Pinecone bluff at the Mallards cafe (Mt Hood Oregon Resort) is nice.

Please RSVP to Michele michelegunness236@gmail.com or Sally, sallyrally@gmail.com, 503-505-4627.

Mt. High Social at McMenamins Edgefield



Aug. 21 (Saturday).

11 a.m. to 3 p.m.

Saturday, August 21st is the date set for an event for Mt. High at McMenamin's at Edgefield.

We have set a day for our club members to

get together to socialize and enjoy a Mexican-styled lunch.

The time is from 11 a.m. to 3 p.m.

Please RSVP for this event: **Debbi Kor**, ijustwannarun1@comcast.net. We need to let McMenamin's know how many people to expect.

We will be in The Attic, which is upstairs in the Power Station.

This is a social gathering at McMenamin's Edgefield for food and drinks. Also, optional, possibly some golf.

This event is sponsored by the club. The food will be provided by the club. People will be responsible to pay only for their own adult beverages.

Kayaking trip



August 23 - 27. Pend Oreille River Water Trail.

THIS TRIP IS ALREADY FULL

Three mid-week days of kayaking on the Pend Oreille River Water Trail near the Washington, Idaho, Canadian border from our base-camp near Ione, WA. Contact **Kurt Wilke** at kurt.wilke1844@gmail.com

MHMCC

History Happy Hour - Steiner Cabins

The History Happy Hour is back!

After more than a year in limbo, due to the COVID-19 pandemic, the series of monthly Saturday evenings at the Mt. Hood Museum is finally back again, starting in August 2021.

There will be two events. First, a presentation about Steiner cabins at the Mt. Hood Museum on a Saturday night. A week later, there will be a tour of some of the cabins. The presentation is free, but you have to purchase tickets for the tour and they go on sale on July 1st.



August 7, 2021 (Sat.). The Steiner Cabins scattered all around Mt. Hood are unique artistic creations. Find out who built them and how. Just come to the History Happy Hour social at the Mt. Hood Museum in Government Camp, located next to the Taco Shoppe.

The presentation is free. Donations to the Museum are very welcome. There will be beer, wine, and soft drinks on sale at the door.

Doors open at 6:30. Presentation begins at 7:00 pm.

Details at: www.mthigh.org/index.htm#History_Happy_Hour



August 14, 2021 (Sat.). Bring some walking shoes or even a bicycle for the Steiner Cabin Tour that will feature 8 homes on a two-mile street loop in Rhododendron.

Tickets are sold online for specific starting times. Tickets go on sale Thursday, July 1. **They always sell out fast! Within a day or two.**

Tickets will be available online at 12:01 a.m. on July 1 at www.mt-hoodmuseum.org. \$35 for museum members or \$40 for non members.

Details at: www.mthigh.org/index.htm#Steiner_Cabins_Tour

Mt. Hood Meadows Mt. Hood Express Planned Upgrade to 6-pack

Can you help with this project? Write to the Forest Service in support of this.

The Mt. Hood National Forest (MHNF) is soliciting comments on a proposal at Mt. Hood Meadows (MHM) to replace the existing Mt. Hood Express chairlift within the existing Special Use Permit.



The existing Mt. Hood Express chairlift is a four-person detachable chairlift that was installed in 1994 and is approaching the end of its operational life. To replace this aging infrastructure and increase the uphill transport capacity of the chairlift, the new Mt. Hood Express would be installed as a six-person detachable chairlift. The increase of uphill and out of base transport capacity by approximately 1,000 people per hour (from the current capacity of approximately 2,600 people per hour to 3,600 people per hour). The 6-passenger lift would be installed in the same location as the existing lift.

If approved, replacing the lift towers will begin at the end of May 2022, and done by the end of the year. If you write in point out the need to relieve long lift lines. Also, that there is not much environmental impact.

Public comments are requested by July 12, 2021. Comments may be submitted online at: <https://cara.ecosystem-management.org/Public/CommentInput?Project=60090>. Written comments may be submitted to the Hood River Ranger District, ATTN: Mt. Hood Express Chairlift Replacement Project, at 6780 Highway 35, Parkdale, OR 97041.

Ski Shows

Snowvana and SkiFever Show Merge

November 19 - 21, 2021 (Fri. - Sun.)

The Ski Fever and Snowboard Show, is merging into Snowvana to create one massive pre-season, get-stoked festival! The ultimate celebration of Winter. The combined show till now take 3 days.



Location: The Oregon Convention Center , 777 NE Martin Luther King Jr Blvd, Portland, OR 97232

Friday 4 pm - 9 pm

Saturday 10 am - 8 pm

Sunday TBA - TBA

Up to 70% off at our huge gear sale and ski swap.

Top filmmakers including the latest releases from TGR

Live music from some of Portland's top musicians

10 Barrel seasonals on tap from the Beer Cat

Kids Zone: Sled Dog Rides, Learn to Ski Ramp presented by ReRack, Lumberyard Bike Park

Plus: Wendell's Halfpipe, 10 Barrel Athlete Lounge, White Claw Music Stage, Mt. Hood Film Festival presented by Crater Lake Spirits, Mountains Arts Gallery, Frozen T-Shirt Contests, Northlake Snow Rider Fitness Pavilion

Win Snowvana Passes – season passes to Meadows, Timberline, Bachelor and Skibowl – enter now!

Mt. Hood Resorts Job Fair

Volunteer opportunities – sign ups in the fall

Tickets on Sale in September! Admission prices TBA..

More info at Snowvana's website: <https://snowvana.com/>

Tickets on Snowvana's web site: <https://snowvana.com/tickets>

Mt. Hood Meadows

New Hiking Trails

Mt. Hood Meadows has just launched summer scenic chairlift and hiking operations with 8.5 miles of newly-constructed hiking trails from the base area. The trail system connects the base area to woodland trails through meadows of wildflowers to magnificent overlooks and waterfall hikes.

The popular Umbrella Falls, Sahalie Falls, Elk Meadows and Timberline trails all pass through the Meadows permit area and are now easily accessed from the new trails built last summer. Resort VP of Marketing and Sales Dave Tragethon says, "We're blessed with a cornucopia of nature and these new trails provide a more personal connection with the mountain environment."

In addition to the interconnections, Meadows also built a trail through scenic Jack's Woods — a popular ski/snowboard run in Heather Canyon — and a spur to Picnic Rock, which Tragethon lauds as "one of the most magnificent overlooks on our mountain."

To provide additional context to hikers about the the natural areas they're enjoying, Meadows is installing a number of large-format interpretive trail signs that will provide information and storytelling on the history of Mt. Hood and Meadows, the resort's important relationship with the Confederated Tribes of Warm Springs, glaciology, volcanology, flora and fauna found in the resort's permit area and more. "It truly is the premier chairlift-served high-altitude hiking experience on Mt. Hood" - said Dave Tragethon.

Days & Hours: June 25 - Sept. 6, Thur. & Fri.: 10am - 5 pm; Sat. & Sun.: 10am - 7 pm; Mon. 10am - 5 pm.

Mt. High

Whitefish Mtn. Resort Trip



March 13 - 20, 2022. 4, 5, or 7 days - by train, car, or plane.

Whitefish Mountain Resort offers 3000 acres of skiing on all sides of Big Mountain. It has 11 chair lifts (3 express quads). It has 2,353 vertical feet and 105 named runs plus vast amounts of bowl and tree skiing. Twelve percent of the terrain is rated green, 38% blue, 44% black and 6% double black.

This will be a flexible, arrange your own transportation trip. Amtrak runs



overnight from Portland or Vancouver to Whitefish and return. Current prices start as low as \$79 per person each way reserved coach. There are a limited number of sleeper berths available. If you prefer to drive, it is a ten-hour drive, and you can stop to ski at other places along the way.

We will be staying at the **Kandahar Lodge**, a very nice on-mountain hotel with a Swiss or Austrian feel. The lobby/great room has a huge fireplace, an award-winning restaurant open only for dinner, and a small separate bar. There is no elevator. All the rooms are on the 2nd and 3rd floors.

It has a free van that will take you where you want to go on the mountain (not into town, there's a free public snow bus for that). The van only runs during the day. At night it's less than a five-minute walk to the bars and restaurants in the upper village, or to catch the snow bus into town.

You can ski-in but would have to walk 50 yards across a parking lot to ski out to a lift. Or take the free van.

For those traveling by train:

- * You will spend 2 nights on the train. The first and the last. You can sleep in the reclining seats, but it is highly recommended to ask for a sleeper car.
- * The train leaves Portland at 4:45 pm the day before and travels through the night. You need to reserve a ticket for March 12.
- * Train arrives in Whitefish early in the morning (at 7:41 am), and you can go skiing right away, after leaving your luggage in Kandahar lodge.
- * The train leaves Whitefish late in the evening, at 8:56 pm. You can ski all day and still have time for dinner in town before boarding the train home.

Price includes:

Free European-style continental breakfast, après ski cookies, freshly made popcorn, hot chocolate, coffee, and tea. Heated boot rooms and ski rooms. Free Wi-Fi, laundry, 24-hour front desk, large outdoor jacuzzi, steam room, and fitness center. Massages are available by appointment. All rooms have at least a small refrigerator and microwave. Some rooms have small kitchens; those will be assigned on a first-come first-served basis.

We have reserved all rooms for 7 nights from March 13 - 20, 2022, but we will also be able to offer either 4- or 5-night stays.

Because we will receive the 7th night comped, 6-night pricing will be the same as 7-night. To make things manageable & simplify matching of roommates, All 4-night and 5-night stays must begin on March 13.

We will do our best to match you with a roommate who wants the same nights as you, but you are ultimately responsible for finding a roommate who wants the same nights as you to fill your room.

Pricing

Lodging (2 people per room)

\$420/person for 6 or 7 nights (we get the 7th night free)

\$350 for 5 nights

\$280 for 4 nights.

For fewer than 6 nights, everyone in the room would need to have the same arrival and departure dates.

Lift Tickets

Adult 1-day	\$68
Adult 2+ days	\$63/day
65-69 1-day	\$59
65-69 2+ days	\$54/day
70+ (or 2+ days)	\$21 (\$20)

2+ days tickets have a 2-day grace period (2 of 4; 3 of 5; 4 of 6, etc.)

Holders of full season passes for Mount Hood Meadows get 3 free days.

Payment and cancellation details

\$150 deposit due at signup.

½ of total minus deposit is due by October 15th.

Remaining balance is due by December 15th.

Final date to cancel with full refund is November 25th.

We hope you join us for this exciting trip. Reserve your spot now with a **\$150 deposit.**

See our [Mt. High Trip Cancellation Policy](#).

Please use the [Dough Transmittal form](#) on the Forms & Docs page on our web site, or on the next to last page in our newsletter. Make check payable to Mountain High Snowsport Club, and mail it to:

Mountain High
PO Box 2182
Portland, OR 97208

Trip leader:

Bill King, willie2k@ymail.com or 360-977-7482.



FWSA Trips

Dive trip to Roatan, Honduras, October 9-16, 2021.

FWSA Ski Week in Aspen, January 29 - Feb. 5, 2022.

Solden, Austria Feb. 26 - March 5, 2022. Extension to Black Forest, Mar 5-11.

Croatia. September 3-11, 2022.

More details on our club's TRIPS page, or click on the above trip names or see the FWSA TRAVEL page at: <https://fwsa.org/>

Far West Convention

October 7 - 10, 2021.



The Far West Ski Association Convention that was originally scheduled for June 2021 has been postponed till October 2021.



It will be hosted by the San Diego Council of Ski Clubs and will be held at the Town and Country Resort & Convention Center in San Diego, CA.

See details on our website at: http://www.mthigh.org/index.htm#Far_West_Convention_2021.

Ski Japan in 2022



Interested in a January or February 2022 trip to **Hokkaido, Japan?**

A week of excellent powder skiing with a Japanese tour operator. Approximately \$3000 Includes lodging, breakfasts, maybe a dinner or two, lift tickets, transportation to resorts and guided tours.

Optional post-trip. We could do a week of touring on the main island.

We need to know who is interested to get better pricing. This is not a club trip so some things may be left to each individual.

If you are interested, contact **Tom Rodrigues** at: trcreek@me.com.

Powder Mountain, Utah, now on the Indy Pass + Club Deal

Powder Mountain, one of the largest ski areas in the US, has joined the Indy Pass, which unites several independent ski areas and gives you 2 days of free skiing at each of them.

Powder Mountain offers 8,000+ acres of terrain to explore (25% beginner, 40% intermediate, 35% advanced).

Due to COVID, the lift ticket numbers will be limited.

Day Ticket limit = 1,500 max. Season Passes = 3,000.

Indy Passes limited to 100 tickets during weekends & peak days, and 250 on weekdays.

Powder Mountain has also offered us a group **discount on day lift tickets**. The best part is that you can get this group rate **even if you show up alone**. Just identify yourself by showing your **membership card**.

2021/22 Season Ski Club Rates

\$74 Adult ages 19-65

\$45 Youth ages 7-18

\$56 Senior ages 65-74

NOTE: Our club doesn't mail out membership cards to everyone. Please pick up your card at the Ski Fever Show or our Kickoff party in November. Or, send an email to membership@mthigh.org and request that we mail it to you.

Powder Mountain also offers a snowcat ride to a nearby peak for powder skiing. A snowcat ride costs \$20.



Season Passes Comparison

Season Pass

Use the Comparison Chart we have compiled to figure out which pass is best for you. It depends on where you plan to ski.

It's a challenge to put this chart together because prices change the longer you wait, while many ski areas will not reveal their prices until late in the Fall.

Some prices have already gone up, such as the IKON pass. Most prices will go up in November, after November 7.

The Comparison Chart is published on our website, on the ARTICLES page, where we keep some articles of more permanent value. See this chart at: <http://www.mthigh.org/Articles/Season-Passes-Comparsion.pdf>

Note that the long list of ski areas in the comparison chart is updated each year, and new ski areas get added. The number of ski areas in some cases has grown larger than what will fit in the limited amount of space. So, for the most accurate and up-to-date list, check the corresponding website.

A ski area may be included in more than one pass. If you know which ski areas you might visit next season, do a search for those in the chart. On a computer, click the **Ctrl+F** keys (or **Cmd+F** on Apple computers). On a smartphone or tablet, chose the option to "Search on page".

General Info

RENEWING A PASS. In some cases, you can get a better price if you already had a certain pass the previous winter and are now just renewing it. Examples: Mt. Hood Meadows, IKON Pass, etc.

NIGHT SKIING. Note that in addition to the regular season passes, Mt. Hood Skibowl also offers a Night Skiing season pass for just \$189.

SPRING PASSES. Note that **Meadows, Timberline, and Skibowl** will be offering **Spring Passes** valid for almost 3 months of skiing in March, April and May, for about \$139 - \$160. Information about these passes will not be available until some time late in February.

VARIETY. For maximum variety, consider the possibility of combining several different passes, such as:

- Buy a season pass to one ski area, and then at the beginning of March, buy a Spring Pass to one of the others.

Some Specifics

IKON PASS. Mt. Bachelor is now part of the IKON Pass. Lower prices offered before June 17 and will be higher after that. This pass is centered around Aspen/Snowmass and all the ski areas owned by or related to them.

EPIC PASS. This pass is centered around Vail Resorts and all the ski areas owned by them. Note that there is an option to purchase an Epic Lake Tahoe pass that includes just Heavenly, Northstar, and Kirkwood.

INDY PASS. The Independent ski areas pass has grown to 68 ski areas. You get 2 free days at each. The latest additions among western ski areas are: Powder Mt. (Utah), Eagle Point (UT) and Mt. Ashland (Oregon). If you already have a season pass to any Indy ski area, you can save about \$90 by purchasing the Add-on Indy pass instead of the full pass.

POWDER ALLIANCE. The Powder Alliance is somewhat similar to the Indy Pass in that it also includes mainly independently owned ski areas, but it also includes unlimited skiing at your home mountain. For Oregonians, that means unlimited skiing at Timberline and Skibowl (with the Fusion Pass) plus 3 days at each of the other 17 ski areas. Note that there is no pass called the Powder Alliance Pass. Instead, your local season pass (the Fusion Pass) is simply valid at all the other Powder Alliance ski areas.

LOVELAND PASS with POWDER ALLIANCE. This pass gives you 3 free days at all the Powder Alliance ski areas **plus** another 18 ski areas on top of that! This includes Powder Mt. (UT), Whitefish (MT), Schweitzer Mt. (ID), Purgatory (CO), Homewood (CA), and more. But you get only 3 days at Timberline and 3 at Skibowl.

MOUNTAIN HIGH

2021/2022 Season Passes

SNOWSPORT CLUB

NOTE: Prices will increase in November. Some prices have already gone up. Gray areas show last season prices, not yet updated.

Ski area / Name of Pass	1 Day	4 - 5 Day	10/12 Days	Adult Season Pass	Senior Season Pass	Season Pass description
<u>Mt. Bachelor</u> Part of the IKON Pass. See info for IKON pass below.	\$96	4-pack \$279 N/A after 9/30	12-day \$629 After 10/1 \$779	Till 6/1 \$1,038 After 10/1 \$1,239	Till 6/1 \$694 After 10/1 \$769	Multiple day passes are not valid on holidays. Seniors over 70 pay \$413. Prices increase a lot after June 1, July 15, and then again after Sept. 30.
<u>Mt. Hood Meadows</u> An all-access pass includes 5 free days at Mt. Baker, plus 3 fee days at: Whitefish Mt., Brundage Mt., Schweitzer, and Sugar Bowl. Also: start skiing later in the day for cheaper price.	\$39 - \$129 by time of day, & week day.	5-days pass not available this year	10- days pass not available this year	Value pass \$459 All-access \$929	Value pass \$359 All-access \$739	Value Pass is valid after 2 pm. Day tickets vary in price by time of day and day of the week. Buy a 4 hour or 7 hour ticket. Starting times are 9 am, 12 pm, 2 pm, and 5 pm. Later times are cheaper. Prices will rise after Nov. 8 to \$929 / \$739. Free skiing for 75+.
<u>Mt. Hood Skibowl</u> (See Fusion Pass)	\$59	--	--	\$443	\$229	Night pass = \$189. / Super-seniors 71+ = \$25.
<u>Timberline</u> (Also see Fusion Pass) Includes the Summit ski area.	\$89	5-days \$265	10- days \$409	\$554	\$194	Multi-day & season prices will increase after Nov. 8 and Nov. 25. .
<u>Indy Pass</u> 68 ski areas, with 2 days at each, for 136 total ski days. West: 49° North, Mt. Ashland, Apex Mt., Beaver Mt., Brundage, Castle Mt., Eagle Point, Eaglecrest, Hoodoo, Hurricane Ridge, Lost Trail, Mission Ridge, Mt. Shasta, China Peak, Pomerelle, Powder Mt., Red Lodge, Silver Mt., White Pass, Sunrise Park, Sasquatch, Snow King, Tamarack, White Pine, +17 Midwest ski areas + 24 in the East.				\$279 or \$379 for Indy+ (no blackout dates)	\$279 or \$379 for Indy+ (no blackout dates)	68 ski areas, with 2 days at each, for 136 total ski days. Get a third day for 25% off. If you have a season pass to any Indy ski area, buy an Add-on Indy pass & save \$90. For \$379 , buy the Indy+ pass which has no blackout dates.
<u>Fusion Pass/Powder Alliance</u> (18 areas) Unlimited skiing at Timberline and Mt. Hood Skibowl + 3 free tickets at each of 16 other ski areas: Mission Ridge, White Pass, Silver Mt, Bridger Bowl, Sierra-at-Tahoe, Bogus Basin, China Peak, Mountain High, Angel Fire, Loveland, Monarch Mt., Marmot Basin, Castle Mt., Eaglecrest (AK), Kiroro (Japan), La Parva (Chile).				\$654 till Nov. 2 \$849 after Nov. 7	\$294 till Nov. 7 \$349 after Nov. 7	Unlimited skiing at Timberline and Mt. Hood Skibowl + 3 free tickets at each of 16 other ski areas, a total of 48 free days. Sunday - Friday is free. Saturdays are regular price. All prices will increase after Nov. 2 and 23.
<u>Mountain Collective Pass</u> (23 areas) 2 tickets at each of: Alta, Arapahoe Basin, Aspen Snowmass, Banff Sunshine, Big Sky, Chamonix/Mont Blanc, Coronet Peak, The Remarkables, Grand Targhee, Jackson Hole, Lake Louise, Mammoth, Mt Buller, Niseko United, Panorama, Revelstoke, Snowbird, Squaw, Alpine Meadows, Sugarbush, Sugarloaf, Sun Peaks, Taos, Thredbo and Valle Nevado.				46-time pass \$499	46-time pass \$499	2 days at each of 23 destinations. Additional days at each resort are 50% off. No blackout dates. Teens, 13 - 18, pay \$399. Kids 12 or younger pay \$129.
<u>Epic Pass</u> (Vail Resorts): Unlimited access to 34 ski areas: 11 in the West: Vail, Beaver Creek, Breckenridge, Keystone, Park City, Crested Butte, Heavenly, Northstar, Kirkwood, Stevens Pass, Whistler/Blackcomb. Plus Hotham, Perisher, Falls Creek in Australia. 15 in the East: Stowe, Okemo, Sunapee, Mt. Snow, Attitash, Wildcat, Hunter, Crotched Mt, Liberty, Roundtop, Whitetail, Jack Frost, Plus 7 days at: Telluride, Sun Valley, Snowbasin.. Plus 5 days at: Hakuba Valley & Rusutsu. Plus 26 areas in Europe.				\$783 till May 31 After that: \$999	\$783 till May 31 After that: \$999	Also: 1-day pass= \$81, 4-day pass = \$493, 7-day pass = \$789, Epic local pass = \$583. Tahoe pass (Heavenly, Northstar, Kirkwood) = \$495. Active/retired military & families = \$135. Other veterans & their families = \$447. Everyone 13 or older pays the same price. Prices will increase in June and in October.
<u>IKON Pass</u> (43 or 45 ski areas) Unlimited access at: Base pass includes 13 areas: Winter Park, Copper Mt., Eldora, Squaw/Alpine Meadows, Mammoth Mt., June Mt., Big Bear, Blue Mt., Snowshoe, Solitude, Straton, Sugarbush, Tremblant. Full pass includes all 13 plus: Steamboat and Crystal Mt.. Both passes also include 5 or 7 days at each of the resorts listed in the column at right.				BASE: \$779 Unlimited at 13 areas plus 5 days at 29 other ski areas.	FULL: \$1049 Unlimited at 15 areas plus 7 days at 29 other ski areas.	West: Mt. Bachelor, Aspen Snowmass, A-Basin, Jackson Hole, Big Sky, Snoqualmie, Taos, Deer Valley, Brighton, Alta/Snowbird, Canada: Revelstoke, SkiBig3, Cypress, East: , Killington- Pico, Sugarbush, Loon Mt., Boyne Mt., Sunday River, Sugarloaf. Other: Zermatt Matterhorn, Thredbo, Mt. Buller, Coronet Peak, The Remarkables, Mt. Hutt, Niseko, Valle Nevado.
<u>Loveland with Powder Alliance</u> Unlimited skiing at Loveland, CO, plus 3 free days at all Powder Alliance ski areas , plus: 3 days at: Purgatory, Monarch, Powderhorn, Powder Mt, Schweitzer, Whitefish, Snow King, Red Lodge, Homewood, Ski Cooper, Sunlight, Brundage, BrianHead, Sipapu, Pajarito, Hesperus, Arizona Snowbowl				\$479	\$119 for seniors 70+	3 free days at all 19 Powder Alliance resorts, plus 3 days at each of another 17 ski areas. Great deal if you want to ski at some of the additional 17 ski areas and are OK to ski no more than 3 days at Timberline / Skibowl.

Click on the blue, underlined pass name for more detailed info and to purchase it.

MOUNTAIN HIGH

Contacts / Club info

SNOWSPORT CLUB

2020 Man & Woman of the Year



Linda McGavin is our Trips Director and trip leader, and one of the founders of our club and of the NWSCC. She is the NWSCC Communications Director.



Bill King is our club's Vice-President and a ski trip leader. He is also the Treasurer for the NW Ski Club Council.

Update: Bill is also the NWSCC man of the year.

Mountain High Board Meeting

July 26 (Mon.): Open to all who want to get involved with the club. Starting at 6:30 pm. See our [website](#).

These Board meetings will be held on-line as long as COVID is still a threat.

Mountain High snowsport club contacts:

President: Debbi Kor H: 503-314-7078
Vice-President: Bill King H: 614-371-4762
Secretary: Michele Gunness
Treasurer: Nancy Pratt H: 503-593-9427
Past President: Kurt Krueger H: 503-625-1492
Membership Director: Karen Michels H: 503-984-9210
Racing Director: Alan Bean H: 503-849-8009
Newsletter Editor: Emilio Trampuz H: 1-503-378-0171
Social Activities: Debbi Kor H: 503-314-7078
Trips Director: Linda McGavin H: 503-652-2840

President@mthigh.org
willie2k@ymail.com
Secretary@mthigh.org
Treasurer@mthigh.org
PastPresident@mthigh.org
skiklynn@gmail.com
Racing@mthigh.org
newsletter@mthigh.org
ijustwannarun1@comcast.net
Trips@mthigh.org

General info:
info@mthigh.org

Web site:
www.mthigh.org

DOUGH TRANSMITTAL FORM

Mail check payable to: Mountain High Snowsport Club, PO Box 2182, Portland, OR 97208.

PLEASE PRINT CLEARLY: ☐ New membership or ☐ Renewal

Name(s): _____ Birthday (MM/DD) _____

Address: _____

Phone (Hm): _____ Phone (Wk): _____

Email (Hm): _____ Email (Wk): _____

Email Preferences: - Newsletter (once a month): ☐ yes, link only ☐ yes, complete file ☐ no
☐ No changes - Club news & events (between newsletters): ☐ yes ☐ no
(same as last year) - Other ski news (NWSCC, FWSA, ski areas, trips...): ☐ yes ☐ no
- Is it OK to share your email address with other club members? ☐ Yes ☐ No

Please take my money, and apply it toward the following Ski Club fun stuff: Deposit? Paid in full?

☐ **Annual Membership** (Oct. 1 - Sept. 30): Single (\$30); couple (\$50) \$ _____

☐ **Whitefish Mt. lodging** (March 13 - 20, 2022) 4, 5, or 7-day trip. Deposit=\$150 \$ _____

I intend to stay: ☐ 6 or 7 nights = \$420, ☐ 5 nights = \$350, ☐ 4 nights = \$280.

☐ **Whitefish Mt. Lift tickets** (March 13 - 20, 2022) I intend to ski _____ days. \$ _____

Adult 1-day=\$68, Adult 2+ days = \$63 /day, Senior (65+)= \$59. Seniors 2+ days=\$54/day. 70+=\$20

☐ **Other:** _____ \$ _____

Total: \$ _____

Comments (For whom you are paying. Roommate requests,...): _____

Signature(s): _____ Date: _____

Signature(s): _____ Date: _____

See our Trips cancellation policy on our web site: <http://www.mthigh.org/Documents/Trip-Cancellation-Policy.pdf>

Checkmark all desired options.

Club membership = 186 Newsletter Distribution

The July 2021 issue is posted on our web site. Also:
161 copies sent via email (as PDF file)
3 paper printed copies sent via US Mail.
 Copies are also sent to potential members, other clubs,
 the National Ski Club Newsletter, etc.

Count Your Ski Areas

Set up your own counter of ski areas visited. Use a modified form of John and Jewel's spreadsheet with 3 added columns, for up to 3 more people. Make one of these your own. Enter a "1" for every ski area visited. See: <http://www.mthigh.org/Documents/North-American-Ski-Areas-2021-02-27.xls>

Mt. High Credit Card Payments



We are now able to process your payments by **credit card**. We are doing it through PayPal.

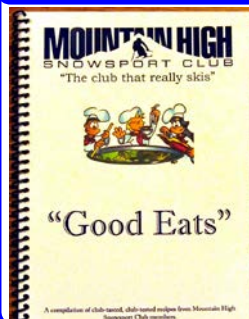
No need to have a PayPal account to make a payment by credit card. Just go to our new web page: "**Signup & Pay**" at: <http://www.mthigh.org/Signup-Pay.htm>

Stories from Shred Hood

The website <https://shredhood.com/> is all about Mt. Hood. Several new articles for this season:

- * [Shooting Extreme Skiers](#)
- * [Looking back at Powder February](#)
- * [Snowboarding Then and Now](#)

Mt. High Cookbook



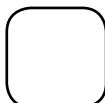
This 34 page cookbook is available for \$10. It has soups, salads, entrees, desserts, from our club members.

The cookbook includes recipes from the late Swiss chef Kurt Mezger. Contact Debbi Kor: ijustwannarun1@comcast.net, or call 503-314-7078.

Stories from Seniors Skiing

A good resource for skiers and riders of all ages. Check out: SeniorsSkiing.com. Subscribe to weekly or monthly emails from them. Click on the Community tab and select "Subscribe". Examples:

- * [Top to Bottom of Tombstone, Park City](#)
- * [Looking Back: US Season Wrap](#)
- * [Top to Bottom at Telluride](#)



Emilio Trampuz
 Mountain High Newsletter editor
 4742 Liberty Rd. S., #296
 Salem, OR 97302
 Please check our web site,
www.mthigh.org
 for updates.