



Lift Lines

= No. 245-246, May-June 2021 =

Mountain High Snowsport Club, PO Box 2182, Portland, OR 97208



Editorial

As the 2020-21 season wraps up, some of us are still skiing on the Palmer snowfield and the Magic Mile. But we are already planning ahead

Summer Activities: We are planning to have one hike, one bike ride, and one social event per month during the summer. And also some other activities too from time to time, like our regular annual highway cleanup. See pages 2 - 3.

Interested in a 3-day kayaking trip? See question on page 3.

Next Winter: Our big trip next winter will be to **Whitefish Mountain, Montana**. We did this in February 2020. Let's do it again in March 2022. See page 7. Those driving to Whitefish could leave a day or two earlier, stop in Missoula, Montana and ski at Lost Trail for a day. It's on the Indy Pass

In the meantime, let's learn something about **safety** on the slopes (page 6).

Where else might you ski next winter? Check out the **comparison chart** of season passes on pages 9 and 10.

Elections and Club Officers. We need to hold an election for our **President**, and **VP of Membership**. would like to be on. If YOU, or someone you know, is interested in being a part of the Mt. High Board, ie. the the Decision Making End of this club, please let us know. Contact any of the current officers. See page 11.

SKI TRIPS: Due to Covid, it is still not safe to pack a bus full of people for several hours, so we are not planning any bus trips yet. So, where else other than Whitefish could we go next winter? Maybe drive to one of the ski areas on the Indy Pass? Or part of the Powder Alliance? Or both? For example, White Pass is on both passes. Shall we drive up there for a day or for a weekend - with lodging in the town of Packwood?

Interested in a weeklong ski trip to Japan? See page 8.

Indy Pass keeps growing

The total number of ski areas that are part of the Indy Pass has grown from 56 to 66. For just \$279 you can get 2 fee days at all 66 of them. Among the most noteworthy for us in the West are:

- [Powder Mountain](#) - Eden, Utah
- [Brundage Mountain Resort](#) - Idaho
- [White Pass](#) - Washington
- [Lost Trail Powder Mt.](#) - Montana
- [49 Degrees North](#) - Washington
- [Hoodoo Ski Area](#) - Sisters, Oregon
- [Mt. Ashland](#) - Ashland, Oregon
- [Mt. Shasta Ski Park](#) - California
- and 17 more! (See page 10)

Note the color code.
Our club is blue.

2021 CALENDAR

Blue: Mountain High events
Maroon: NWSCC / FWSA / Multi-club
Black: General interest events

MAY

May. 25 (Tue) Mt. High Board meeting

JUNE

June 5 (Sat.) Highway Cleanup, 10 am.
June 11 (Fri.) Salmon River West Hike
June 17 (Thr) TGIF - Happy Hour at 5 pm
June 20 (Sun.) Trillium Lake bike ride

JULY

TBA Hikes, Bike rides, etc.
July 24 (Sat.) Mt. High Social at Debbi's
(Seafood or BBQ?)

AUGUST

Aug. 21 (Sat.) Mt. High Social at Edgefield -
11 am to 5 pm.

OCTOBER

Oct 7- 10 **FWSA Convention, San Diego** This
convention was moved from
June to October.

Mt. High

Spring / Summer Fun



Spring Skiing



Hiking



Biking



Social Activities

Mt. High

Highway Cleanup

June 5 (Sat.). 10 am - Noon. It's time for our Summer Cleanup of the 2 miles of Highway 26 we've adopted, from mile post 51 to 53, just west of Government Camp.

We'll meet at **10 am** in Skibowl's parking lot, and spend about 2 hours removing stuff people throw out along the highway. Let's see who will find the most interesting object! Bring some gloves. We will provide garbage bags and garbage pickers (Bring one if you have one).

At **noon**, lunch will be provided for all who participate in the cleanup. Most likely at the Ice Axe brew pub or at The Taco Shoppe in Government Camp.

We need only about 10 people. Please don't come unannounced.

If you are planning to come please RSVP by contacting **Debbi Kor**, 503-314-7078 or ijustwannarun1@comcast.net



Mt. High Hiking - Salmon River West



Michele Gunness and **Sally Niedermeyer** are planning a series of hikes, about one a month, including:

June 11 (Friday). [Salmon River West hike](#). 9 am. A moderate 7.8 miles round trip to the first view point and back. Elevation gain = 950 feet. The trail follows Salmon River through old growth rainforest, then climbs to a great viewpoint of the vast Salmon River canyon. We'll have a picnic lunch there. This is a fee area requiring either a NW Forest pass or an Interagency pass. like the America the Beautiful pass.

Meet at 9 am at the Subway parking lot in Zigzag. It will be on your right off of highway 26 after Welches but before the Zig Zag Inn.

Please RSVP to Michele michelegunness236@gmail.com or Sally, sallyrally@gmail.com, 503-505-4627

TGIF

June 17 (Thursday). Starting at 5 pm.

Happy Hour at Lake Oswego Grill, Kruse Way. Please respond to **Debbi Kor** at President@mthigh.org

Mt. High

Social Activities



Debbi Kor has several social activities planned for this summer of 2021, including:

July 24 (Saturday). Social gathering at Debbi's place. Starting at 5 pm.

We can either do a backyard BBQ, or turn it into the Annual Seafood Party. We'll let the club decide what they want to do. Please respond to **Debbi Kor** at President@mthigh.org by the end of June, and let her know if you prefer a BBQ or seafood.

Mt. High Trillium Lake Bicycle Ride

Emilio Trampuz is planning one bike ride each month.

June 20 (Sunday). Trillium Lake ride. 10 am.

Government Camp around Trillium Lake and back. Meet at 10 am at the ODOT Highway Maintenance Station on Hwy. 26, just past Government Camp, and across from where Timberline Road starts. That way, we won't have to cross the highway at all.

We will explore more of the trail around the lake and also a trail we haven't tried before.

Bring some fruit, or snack, or a sandwich for a short rest stop / picnic near the lake.

If you are coming, please RSVP to Emilio at Emilio2000@earthlink.net, 503-510-1477.

Social at McMenamins Edgefield

Debbi Kor is organizing another exciting social event.

August 21 (Saturday). 11 a.m. to 3 p.m.

Social gathering at McMenamin's Edgefield for some food and drinks. Also, optional, possibly some golf.

This event is sponsored by the club. The food will be provided by the club. People will be responsible to pay only for their own adult beverages.

Kayaking trip**August 23 - 27. Pend Oreille River.**

Would you be interested in 3 days of kayaking mid-week on a placid Pend Oreille river near the Washington/Idaho border, with no rapids? There are campsites along the river. If so, contact **Kurt Wilke** at kurt.wilke1844@gmail.com

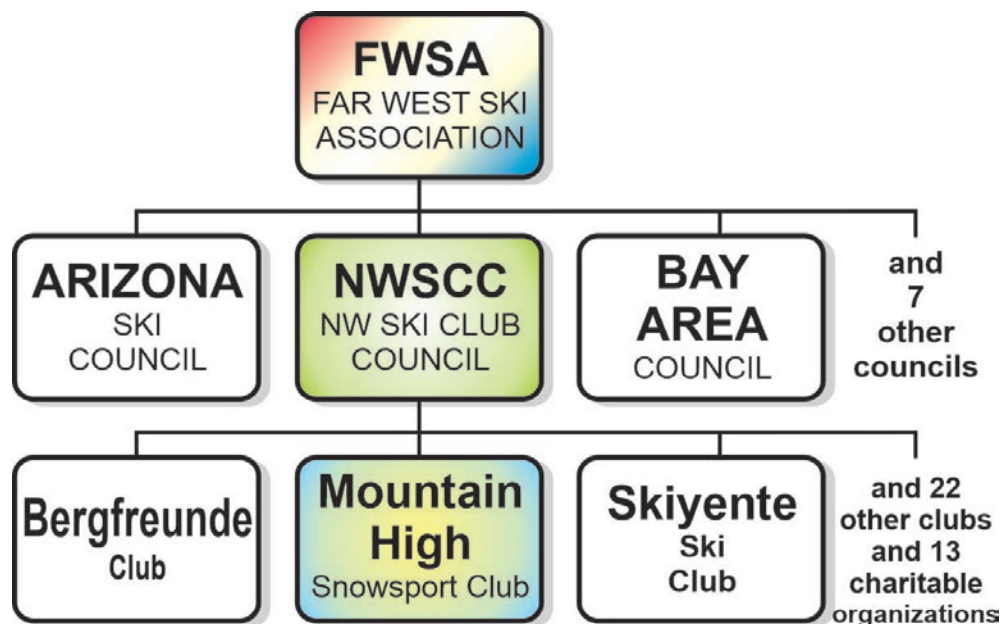
FWSA / NWSCC / Mt. High

Our club is part of the Northwest Ski Club Council, which represents 25 ski clubs in the region plus 13 charitable organizations. Just remember that we are all part of the NWSCC.

The NWSCC in turn is part of the Far West Ski Association (FWSA), which represents a total of 10 ski councils in the western part of the United States.

Again, we are all part of the FWSA just by being Mountain High club members. Our membership cards say so too.

Whenever you hear of some event or some benefit available to NWSCC or FWSA members, that is all of us!



Each year, at the **Far West Ski Association's** annual convention, held in a different city each year, several individuals and ski clubs and Councils are awarded prizes of recognition. Here are just some of them. **You too can win.** Make an effort to do something positive and valuable for your club and/or for snow sports, and then either apply directly or let someone nominate you.

The FWSA deadline for nominations is July 18, but it is better to apply earlier than that. For more info on the FWSA awards, check out the FWSA web site, www.fwsa.org, or contact Debbi Kor at: 503-314-7078, ijustwannarun1@comcast.net

Man & Woman of the Year

First, each club recognizes their own man and woman of the year. See the [Awards](#) page on our web site for a list of past winners.

The two people from each club then proceed to the next level (the Northwest region). The NW Ski Club Council selects just one pair (not necessarily from the same club) among all the local club nominees. Those two people then represent the NWSCC at the Far West Convention.

At the Far West Convention, one final pair is selected among all the Ski Club Councils in the west.

The grand prize is a trip for two to **Big White**, Canada.

To see who within our club has won in past years, see our AWARDS page on the web site: www.mthigh.org/Awards.htm.

NOTE

Since the Far West Convention was not held last year (2020) due to the Covid pandemic, it has been decided that the same candidates that were nominated last year will be considered this year.

Safety Person of the Year

This annual award honors the person who has done the most to promote safety consciousness within the association. This can be done in a variety of ways including safety articles, on mountain activities, presentations, public speaking, working ski patrol, creating posters or banners, and many other activities.

The winner receives a 5-day ski/board package to **Mammoth Mountain** for two that includes: 5 nights lodging, 4 day lift ticket, and 4 days of rentals. Previous winners from the Northwest include **Emilio Trampuz** and **Sue Rimkeit**.

Resume & Entry Form must be sent to chairman by July 18. See: https://www.fwsa.org/content.aspx?page_id=22&club_id=623165&module_id=334813

Western Ski Heritage Award

The aim of the award is to raise the awareness of the contributions made by individuals or groups to all aspects of snowsports – competitive as well as recreational. Also to convey the positive role snowsports has had in its contributions to the communities in the West. It recognizes outstanding effort in the area of snowsports history to find, preserve, document and share the history of snowsports in the West.

The winner receives a 5-day ski/board package to **Steamboat** for two: 5 nights lodging, 5 days skiing, 5 day rentals, a lesson, a tour, and lunch. Past winners were **Emilio Trampuz**, and the **Mt. Hood Museum**.

Submit entry by July 18. See: https://www.fwsa.org/content.aspx?page_id=22&club_id=623165&module_id=334814

Environmental Award

This award is designed to encourage good stewardship of our environment, to inspire and reward creative efforts to conserve and protect our environment. This award should recognize actions that made a difference. For example: Volunteering at the community level, particularly in some leadership role; Organizing environmentally oriented events for the club or council; Writing a series of columns regarding environmental conservation, education or protection in your club newsletter.

The winner receives a 5-day ski/board package to **Aspen/Snowmass** for two: 5 nights lodging split between Aspen & Snowmass, 5 day lift ticket, and 5 days of rentals, a day group lesson. This is a new award.

Submit entry by July 18. See: https://www.fwsa.org/content.aspx?page_id=22&club_id=623165&module_id=392866

How To Find Things on our web site

1. When was the last time we had a **Mystery** trip? And where to?
2. Which year did we experience that fantastic powder at Mt. **Ashland**?
3. What was the last time we had a **Ski Fair** in Portland?
4. What was the name of last year's **Warren Miller** movie?
5. How often should we **wax** our skis? This was covered in our newsletter but I don't remember what was said or which issue it was.



The answers to these and many other questions can be found on our web site. You will find them mostly on the NEWSLETTER, ARTICLES, and PHOTOS pages. The Newsletters page is a good place to start.

And the blue bold words above are your search words.

For example, let's find out when was it that we experienced that memorable powder day at Mt. Ashland. Here's how to do it:

1. Go to the **NEWSLETTER** page on our web site. Lots of text there!
2. Hit **Ctrl-F** (or **Cmd-F**) for the FIND command. Use "Ashland" as the search word. Side column here shows how to do it on a smartphone.
3. You'll find "Ashland in April 2019, the most recent trip there. That's too soon. In 2019, we had a sunny day. Search NEXT and find "Ashland" in March - May 2012 issue of Lift Lines.
4. So, click on that newsletter link for issue #135-137. It summarizes ALL the ski trips we did that year.

Look at page 7. It's all about that memorable Mystery trip to Mt. Shasta and Mt. Ashland. It happened on **March 16 - 18, 2012**.

You can use this method to find a lot of things on our web site.

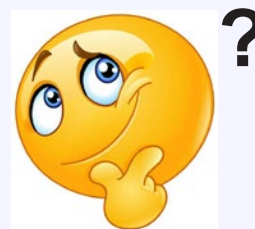
Navigating our web site

Many of our web pages are very long. Here are a few tips on how to navigate them without too much scrolling, and how to find things.

1. **To get back to the top of the page**, hit the **Home** key on your keyboard. That's on a computer. Does anyone know how to jump back to the top of the page on a smartphone?
2. **To get back to our Home page** (the Events Calendar page), click/tap on either the "**Home/Events**" button at the top of the menu, or click/tap on the **Mountain High logo** at the top of the page.
3. **To find out anything about any ski area in the west**, such as how much snow they have, or what their hours of operation are, or to take a look at their trail map, on our web site, simply click on the "**Ski Areas**" button in the menu, and then click on the desired ski area.

Our web site is: www.mthigh.org

Find vs. Search



There are at least 3 different levels of searching for things on the web or in your own documents.

Search engines, such as Google, Bing, DuckDuckGo, Yahoo, or AOL, will search the whole internet.

Search a web site. Some web sites offer an internal search of their own. You type in a search word, and the search will be performed on the entire web site, but not the whole internet. Our club's web site could use such an internal search engine, but it is complicated to implement.

Find is a command that can be used anywhere on any web page, or any document, such as within Word, a spreadsheet, or a PDF file. It will search only that document or that page and nothing beyond that. To invoke that command:

On a **Windows** computer, hit **Ctrl-F** or click on Edit > Find & Replace.

On an **Apple** computer, hit **Cmd-F**

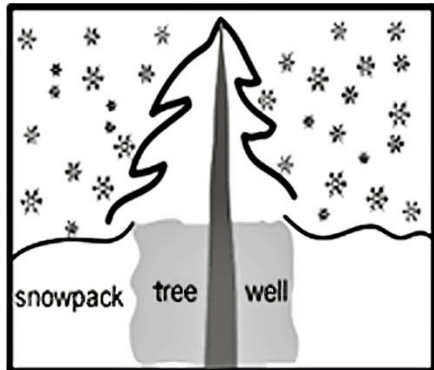
On **Android** smartphone, within a browser, tap on Menu > More > **Find on page**. The menu is often represented by 3 dots (...).

In **Chrome** (a web-based computer), tap on Menu > **Find on page**.

On **iPhone**, the FIND command seems to be missing. At least it was missing in the earlier iPhones. Does anyone know if the latest iPhones have a FIND command for searching within a document?

Which Tree is Safer? Which is More Dangerous?

You don't even need to ski in the backcountry to be exposed to some danger from nearby trees. You might be skiing a groomed trail and accidentally ski off to the edge of the trail and hit a tree. In fact, that's how Michael Kennedy died on December 31, 1997, in a skiing accident on Aspen Mountain, Colorado. He was playing football while on skis with several other members of the Kennedy family when, distracted by the game, he hit a tree.



So, it's good to know a bit more about trees and the dangers they might pose. In addition to a simple collision, many trees pose a much greater danger in the form of a **tree well** - which is a hollow space around the tree. This hollow is usually hidden under a thin layer of snow covering it up. If you fall into a tree well, most people are not able to get out of it without help from others.

Most people who end up in a tree-well and don't get help die from either:

- a) **Suffocation** when submerged in powdery snow; or
- b) **Dehydration or hypothermia** from being in a cold place for too long.

It's always a good idea to stay away from trees. But it helps to know which ones are the most dangerous. So, what do you think? Can you rank the following trees from the most dangerous to the least dangerous?



A: Naked trunk, no crater. B: Naked trunk, with crater. C: Branches buried, in crater. D: Branches buried, no crater.

Answer: A crater by itself is not so dangerous, because it actually gives you plenty of warning by its appearance. Such craters are often very wide and visible, and the walls are sloping at a relatively gentle angle. It might hurt you if you jam the tips of your skis into the crater's wall, but the bottom of the crater is often on ground level, and you can usually sidestep and walk out of the crater.

A naked trunk, as in trees A and B, is usually safe. The snow packs tightly around it and there is no tree well. The most dangerous is the "D" tree, without a crater to warn you and the lower branches are buried in the snow. This might be just the top part of a tall tree, with many more branches invisible under the snow. These branches create the empty spaces, pockets of air. These trees may seem safe, but they can hide very large tree wells.

Starting with the most dangerous, the trees are: D, C, B, and A. A is totally safe. B also has a naked trunk, but the crater might potentially trip you. C and D are both dangerous, but at least C has a crater to warn you to stay away. The D tree is the most dangerous because it seems safe but the buried branches hide a tree well.

Mt. High

Whitefish Mtn. Resort Trip



March 13 - 20, 2022. 4, 5, or 7 days - by train, car, or plane.

Whitefish Mountain Resort offers 3000 acres of skiing on all sides of Big Mountain. It has 11 chair lifts (3 express quads). It has 2,353 vertical feet and 105 named runs plus vast amounts of bowl and tree skiing. Twelve percent of the terrain is rated green, 38% blue, 44% black and 6% double black.

This will be a flexible, arrange your own transportation trip. Amtrak runs



overnight from Portland or Vancouver to Whitefish and return. Current prices start as low as \$79 per person each way reserved coach. There are a limited number of sleeper berths available. If you prefer to drive, it is a ten-hour drive, and you can stop to ski at other places along the way.

We will be staying at the **Kandahar Lodge**, a very nice on-mountain hotel with a Swiss or Austrian feel. The lobby/great room has a huge fireplace, an award-winning restaurant open only for dinner, and a small separate bar. There is no elevator. All the rooms are on the 2nd and 3rd floors.

It has a free van that will take you where you want to go on the mountain (not into town, there's a free public snow bus for that). The van only runs during the day. At night it's less than a five-minute walk to the bars and restaurants in the upper village, or to catch the snow bus into town.

You can ski-in but would have to walk 50 yards across a parking lot to ski out to a lift. Or take the free van.

For those traveling by train:

- * You will spend 2 nights on the train. The first and the last. You can sleep in the reclining seats, but it is highly recommended to ask for a sleeper car.
- * The train leaves Portland at 4:45 pm the day before and travels through the night. You need to reserve a ticket for March 12.
- * Train arrives in Whitefish early in the morning (at 7:41 am), and you can go skiing right away, after leaving your luggage in Kandahar lodge.
- * The train leaves Whitefish late in the evening, at 8:56 pm. You can ski all day and still have time for dinner in town before boarding the train home.

Price includes:

Free European-style continental breakfast, après ski cookies, freshly made popcorn, hot chocolate, coffee, and tea. Heated boot rooms and ski rooms. Free Wi-Fi, laundry, 24-hour front desk, large outdoor jacuzzi, steam room, and fitness center. Massages are available by appointment. All rooms have at least a small refrigerator and microwave. Some rooms have small kitchens; those will be assigned on a first-come first-served basis.

We have reserved all rooms for 7 nights from March 13 - 20, 2022, but we will also be able to offer either 4- or 5-night stays.

Because we will receive the 7th night comped, 6-night pricing will be the same as 7-night. To make things manageable & simplify matching of roommates, All 4-night and 5-night stays must begin on March 13.

We will do our best to match you with a roommate who wants the same nights as you, but you are ultimately responsible for finding a roommate who wants the same nights as you to fill your room.

Pricing

Lodging (2 people per room)
 \$420/person for 6 or 7 nights (we get the 7th night free)
 \$350 for 5 nights
 \$280 for 4 nights.

For fewer than 6 nights, everyone in the room would need to have the same arrival and departure dates.

Lift Tickets

Adult 1-day	\$68
Adult 2+ days	\$63/day
65-69 1-day	\$59
65-69 2+ days	\$54/day
70+ (or 2+ days)	\$21 (\$20)

2+ days tickets have a 2-day grace period (2 of 4; 3 of 5; 4 of 6, etc.)

Holders of full season passes for Mount Hood Meadows get 3 free days.

Payment and cancellation details

\$150 deposit due at signup.

½ of total minus deposit is due by October 15th.

Remaining balance is due by December 15th.

Final date to cancel with full refund is November 25th.

We hope you join us for this exciting trip. Reserve your spot now with a **\$150 deposit.**

See our [Mt. High Trip Cancellation Policy](#).

Please use the [Dough Transmittal form](#) on the Forms & Docs page on our web site, or on the next to last page in our newsletter. Make check payable to Mountain High Snowsport Club, and mail it to:

Mountain High
 PO Box 2182
 Portland, OR 97208

Trip leader:

Bill King, willie2k@ymail.com or 360-977-7482.



FWSA Trips

Dive trip to Roatan, Honduras, October 9-16, 2021.

FWSA Ski Week in Aspen, January 29 - Feb. 5, 2022.

Solden, Austria Feb. 26 - March 5, 2022. Extension to Black Forest, Mar 5-11.

Croatia. September 3-11, 2022.

More details on our club's TRIPS page, or click on the above trip names or see the FWSA TRAVEL page at: <https://fwsa.org/>

Far West Convention

October 7 - 10, 2021.



The Far West Ski Association Convention that was originally scheduled for June 2021 has been postponed till October 2021.



It will be hosted by the San Diego Council of Ski Clubs and will be held at the Town and Country Resort & Convention Center in San Diego, CA.

See details on our website at: http://www.mthigh.org/index.htm#Far_West_Convention_2021.

Ski Japan in 2022



Interested in a January or February 2022 trip to **Hokkaido, Japan?**

A week of excellent powder skiing with a Japanese tour operator. Approximately \$3000 Includes lodging, breakfasts, maybe a dinner or two, lift tickets, transportation to resorts and guided tours.

Optional post-trip. We could do a week of touring on the main island.

We need to know who is interested to get better pricing. This is not a club trip so some things may be left to each individual.

If you are interested, contact **Tom Rodrigues** at: trcreek@me.com.

Powder Mountain, Utah, now on the Indy Pass + Club Deal

Powder Mountain, one of the largest ski areas in the US, has joined the Indy Pass, which unites several independent ski areas and gives you 2 days of free skiing at each of them.

Powder Mountain offers 8,000+ acres of terrain to explore (25% beginner, 40% intermediate, 35% advanced) .

Due to COVID, the lift ticket numbers will be limited.

Day Ticket limit = 1,500 max. Season Passes= 3,000.

Indy Passes limited to 100 tickets during weekends & peak days, and 250 on weekdays.

Powder Mountain has also offered us a group **discount on day lift tickets**. The best part is that you can get this group rate **even if you show up alone**. Just identify yourself by showing your **membership card**.

2021/22 Season Ski Club Rates

\$74 Adult ages 19-65

\$45 Youth ages 7-18

\$56 Senior ages 65-74

NOTE: Our club doesn't mail out membership cards to everyone. Please pick up your card at the Ski Fever Show or our Kickoff party in November. Or, send an email to membership@mthigh.org and request that we mail it to you.

Powder Mountain also offers a snowcat ride to a nearby peak for powder skiing. A snowcat ride costs \$20.



Season Passes Comparison

Season Pass

Use the Comparison Chart we have compiled to figure out which pass is best for you. It depends on where you plan to ski.

It's a challenge to put this chart together because prices change the longer you wait, while many ski areas will not reveal their prices until late in the Fall.

Some prices have already gone up, such as the IKON pass. Most prices will go up in November, after November 7.

The Comparison Chart is published on our website, on the ARTICLES page, where we keep some articles of more permanent value. See this chart at: <http://www.mthigh.org/Articles/Season-Passes-Comparsion.pdf>

Note that the long list of ski areas in the comparison chart is updated each year, and new ski areas get added. The number of ski areas in some cases has grown larger than what will fit in the limited amount of space. So, for the most accurate and up-to-date list, check the corresponding website.

A ski area may be included in more than one pass. If you know which ski areas you might visit next season, do a search for those in the chart. On a computer, click the **Ctrl+F** keys (or **Cmd+F** on Apple computers). On a smartphone or tablet, chose the option to "Search on page".

General Info

RENEWING A PASS. In some cases, you can get a better price if you already had a certain pass the previous winter and are now just renewing it. Examples: Mt. Hood Meadows, IKON Pass, etc.

NIGHT SKIING. Note that in addition to the regular season passes, Mt. Hood Skibowl also offers a Night Skiing season pass for just \$189.

SPRING PASSES. Note that **Meadows, Timberline, and Skibowl** will be offering **Spring Passes** valid for almost 3 months of skiing in March, April and May, for about \$139 - \$160. Information about these passes will not be available until some time late in February.

VARIETY. For maximum variety, consider the possibility of combining several different passes, such as:

- Buy a season pass to one ski area, and then at the beginning of March, buy a Spring Pass to one of the others.

Some Specifics

IKON PASS. Mt. Bachelor is now part of the IKON Pass. Lower prices offered before June 17 and will be higher after that. This pass is centered around Aspen/Snowmass and all the ski areas owned by or related to them.

EPIC PASS. This pass is centered around Vail Resorts and all the ski areas owned by them. Note that there is an option to purchase an Epic Lake Tahoe pass that includes just Heavenly, Northstar, and Kirkwood.

INDY PASS. The Independent ski areas pass has grown to 66 ski areas. You get 2 free days at each. The latest additions among western ski areas are: Powder Mt. (Utah) and Mt. Ashland (Oregon).

POWDER ALLIANCE. The Powder Alliance is somewhat similar to the Indy Pass in that it also includes mainly independently owned ski areas, but it also includes unlimited skiing at your home mountain. For Oregonians, that means unlimited skiing at Timberline and Skibowl (with the Fusion Pass) plus 3 days at each of the other 17 ski areas. Note that there is no pass called the Powder Alliance Pass. Instead, your local season pass (the Fusion Pass) is simply valid at all the other Powder Alliance ski areas.

LOVELAND PASS with POWDER ALLIANCE. This pass gives you 3 free days at all the Powder Alliance ski areas **plus** another 18 ski areas on top of that! This includes Powder Mt. (UT), Whitefish (MT), Schweitzer Mt. (ID), Purgatory (CO), Homewood (CA), and more. But you get only 3 days at Timberline and 3 at Skibowl.

MOUNTAIN HIGH

2021/2022 Season Passes

SNOWSPORT CLUB

NOTE: Prices will increase in November. Some prices have already gone up. Gray areas show last season prices, not yet updated.

Ski area / Name of Pass	1 Day	4 - 5 Day	10/12 Days	Adult Season Pass	Senior Season Pass	Season Pass description
<u>Mt. Bachelor</u> Part of the IKON Pass. See info for IKON pass below.	\$96	4-pack \$279 N/A after 9/30	12-day \$629 After 10/1 \$779	Till 6/1 \$1,038 After 10/1 \$1,239	Till 6/1 \$694 After 10/1 \$769	Multiple day passes are not valid on holidays. Seniors over 70 pay \$413. Prices increase a lot after June 1, July 15, and then again after Sept. 30.
<u>Mt. Hood Meadows</u> Includes 5 free days at Mt. Baker, plus 3 fee days at: Whitefish Mt., Brundage Mt., Schweitzer, and Sugar Bowl. Start skiing later in the day for cheaper price.	\$39 - \$129 by time of day, & week day.	5-days pass not available this year	10- days pass not available this year	Value pass \$459 All-access \$929	Value pass \$359 All-access \$739	Value Pass is valid after 2 pm. Day tickets vary in price by time of day and day of the week. Buy a 4 hour or 7 hour ticket. Starting times are 9 am, 12 pm, 2 pm, and 5 pm. Later times are cheaper. Prices will rise after Nov. 8 to \$929 / \$739. Free skiing for 75+.
<u>Mt. Hood Skibowl</u> (See Fusion Pass)	\$59	--	--	\$443	\$229	Night pass = \$189. / Super-seniors 71+ = \$25.
<u>Timberline</u> (Also see Fusion Pass) Includes the Summit ski area.	\$89	5-days \$265	10- days \$409	\$554	\$194	Multi-day & season prices will increase after Nov. 8 and Nov. 25. .
<u>Indy Pass</u> 66 ski areas, with 2 days at each, for 132 total ski days. West: 49° North, Mt. Ashland, Apex Mt., Beaver Mt., Brundage, Castle Mt., Eaglecrest, Hoodoo, Hurricane Ridge, Lost Trail, Mission Ridge, Mt. Shasta, China Peak Pomerelle, Powder Mt., Red Lodge, Silver Mt., White Pass, Sunrise Park, Sasquatch, Snow King, Tamarack, White Pine, and 17 ski areas in the Midwest and 24 in the East.				\$279	\$279	66 ski areas, with 2 days at each, for 132 total ski days. Plus, get a third day for 25% off. A few ski areas have blackout dates on holidays. For \$379, you can buy the Indy+ pass which has no blackout dates.
<u>Fusion Pass/Powder Alliance</u> (18 areas) Unlimited skiing at Timberline and Mt. Hood Skibowl + 3 free tickets at each of 16 other ski areas: Mission Ridge, White Pass, Silver Mt, Bridger Bowl, Sierra-at-Tahoe, Bogus Basin, China Peak, Mountain High, Angel Fire, Loveland, Monarch Mt., Marmot Basin, Castle Mt., Eaglecrest (AK), Kiroro (Japan), La Parva (Chile).				\$654 till Nov. 2 \$849 after Nov. 7	\$294 till Nov. 7 \$349 after Nov. 7	Unlimited skiing at Timberline and Mt. Hood Skibowl + 3 free tickets at each of 16 other ski areas, a total of 48 free days. Sunday - Friday is free. Saturdays are regular price. All prices will increase after Nov. 2 and 23.
<u>Mountain Collective Pass</u> (23 areas) 2 tickets at each of: Alta, Arapahoe Basin, Aspen Snowmass, Banff Sunshine, Big Sky, Chamonix/Mont Blanc, Coronet Peak, The Remarkables, Grand Targhee, Jackson Hole, Lake Louise, Mammoth, Mt Buller, Niseko United, Panorama, Revelstoke, Snowbird, Squaw, Alpine Meadows, Sugarbush, Sugarloaf, Sun Peaks, Taos, Thredbo and Valle Nevado.				46-time pass \$499	46-time pass \$499	2 days at each of 23 destinations. Additional days at each resort are 50% off. No blackout dates. Teens, 13 - 18, pay \$399. Kids 12 or younger pay \$129.
<u>Epic Pass</u> (Vail Resorts): Unlimited access to 34 ski areas: 11 in the West: Vail, Beaver Creek, Breckenridge, Keystone, Park City, Crested Butte, Heavenly, Northstar, Kirkwood, Stevens Pass, Whistler/Blackcomb. Plus Hotham, Perisher, Falls Creek in Australia. 15 in the East: Stowe, Okemo, Sunapee, Mt. Snow, Attitash, Wildcat, Hunter, Crotched Mt, Liberty, Roundtop, Whitetail, Jack Frost, Plus 7 days at: Telluride, Sun Valley, Snowbasin.. Plus 5 days at: Hakuba Valley & Rusutsu. Plus 26 areas in Europe.				\$783 till May 31 After that: \$999	\$783 till May 31 After that: \$999	Also: 1-day pass= \$81, 4-day pass = \$493, 7-day pass = \$789, Epic local pass = \$583. Tahoe pass (Heavenly, Northstar, Kirkwood) = \$495. Active/retired military & families = \$135. Other veterans & their families = \$447. Everyone 13 or older pays the same price. Prices will increase in June and in October.
<u>IKON Pass</u> (43 or 45 ski areas) Unlimited access at: Base pass includes 13 areas: Winter Park, Copper Mt., Eldora, Squaw/Alpine Meadows, Mammoth Mt., June Mt., Big Bear, Blue Mt., Snowshoe, Solitude, Straton, Sugarbush, Tremblant. Full pass includes all 13 plus: Steamboat and Crystal Mt.. Both passes also include 5 or 7 days at each of the resorts listed in the column at right.				BASE: \$779 Unlimited at 13 areas plus 5 days at 29 other ski areas.	FULL: \$1049 Unlimited at 15 areas plus 7 days at 29 other ski areas.	West: Mt. Bachelor, Aspen Snowmass, A-Basin, Jackson Hole, Big Sky, Snoqualmie, Taos, Deer Valley, Brighton, Alta/Snowbird, Canada: Revelstoke, SkiBig3, Cypress, East: , Killington- Pico, Sugarbush, Loon Mt., Boyne Mt., Sunday River, Sugarloaf. Other: Zermatt Matterhorn, Thredbo, Mt. Buller, Coronet Peak, The Remarkables, Mt. Hutt, Niseko, Valle Nevado.
<u>Loveland with Powder Alliance</u> Unlimited skiing at Loveland, CO, plus 3 free days at all Powder Alliance ski areas, plus: 3 days at: Purgatory, Monarch, Powderhorn, Powder Mt, Schweitzer, Whitefish, Snow King, Red Lodge, Homewood, Ski Cooper, Sunlight, Brundage, BrianHead, Sipapu, Pajarito, Hesperus, Arizona Snowbowl				\$479	\$119 for seniors 70+	3 free days at all 19 Powder Alliance resorts, plus 3 days at each of another 17 ski areas. Great deal if you want to ski at some of the additional 17 ski areas and are OK to ski no more than 3 days at Timberline / Skibowl.

Click on the blue, underlined pass name for more detailed info and to purchase it.

MOUNTAIN HIGH

Contacts / Club info

SNOWSPORT CLUB

2020 Man & Woman of the Year



Linda McGavin is our Trips Director and trip leader, and one of the founders of our club and of the NWSCC. She is the NWSCC Communications Director.



Bill King is our club's Vice-President and a ski trip leader. He is also the Treasurer for the NW Ski Club Council.

Update: Bill is also the NWSCC man of the year.

Mountain High Board Meeting

May 25 (Tue.) + June 28 (Mon.): Open to all who want to get involved with the club. Starting at **6:30 pm**. See our [website](#).

These Board meetings will be held on-line as long as COVID is still a threat.

Mountain High snowsport club contacts:

President: Debbi Kor H: 503-314-7078
Vice-President: Bill King H: 614-371-4762
Secretary: Michele Gunness
Treasurer: Nancy Pratt H: 503-593-9427
Past President: Kurt Krueger H: 503-625-1492
Membership Director: Karen Michels H: 503-984-9210
Racing Director: Alan Bean H: 503-849-8009
Newsletter Editor: Emilio Trampuz H: 1-503-378-0171
Social Activities: Debbi Kor H: 503-314-7078
Trips Director: Linda McGavin H: 503-652-2840

President@mthigh.org
willie2k@ymail.com
Secretary@mthigh.org
Treasurer@mthigh.org
PastPresident@mthigh.org
skiklynn@gmail.com
Racing@mthigh.org
newsletter@mthigh.org
ijustwannarun1@comcast.net
Trips@mthigh.org

General info:
info@mthigh.org

Web site:
www.mthigh.org

DOUGH TRANSMITTAL FORM

Mail check payable to: Mountain High Snowsport Club, PO Box 2182, Portland, OR 97208.

PLEASE PRINT CLEARLY: ☐ New membership or ☐ Renewal

Name(s): _____ Birthday (MM/DD) _____

Address: _____

Phone (Hm): _____ Phone (Wk): _____

Email (Hm): _____ Email (Wk): _____

Email Preferences: - Newsletter (once a month): ☐ yes, link only ☐ yes, complete file ☐ no
☐ No changes - Club news & events (between newsletters): ☐ yes ☐ no
 (same as last year) - Other ski news (NWSCC, FWSA, ski areas, trips...): ☐ yes ☐ no
 - Is it OK to share your email address with other club members? ☐ Yes ☐ No

Please take my money, and apply it toward the following Ski Club fun stuff: Deposit? Paid in full?

☐ **Annual Membership** (Oct. 1 - Sept. 30): Single (\$30); couple (\$50) \$ _____

☐ **Whitefish Mt. lodging** (March 13 - 20, 2022) 4, 5, or 7-day trip. Deposit=\$150 \$ _____

I intend to stay: ☐ 6 or 7 nights = \$420, ☐ 5 nights = \$350, ☐ 4 nights = \$280.

☐ **Whitefish Mt. Lift tickets** (March 13 - 20, 2022) I intend to ski _____ days. \$ _____

Adult 1-day=\$68, Adult 2+ days = \$63 /day, Senior (65+)= \$59. Seniors 2+ days=\$54/day. 70+=\$20

☐ **Other:** _____ \$ _____

Total: \$ _____

Comments (For whom you are paying. Roommate requests,...): _____

Signature(s): _____ Date: _____

Signature(s): _____ Date: _____

See our Trips cancellation policy on our web site: <http://www.mthigh.org/Documents/Trip-Cancellation-Policy.pdf>

Checkmark all desired options.

Club membership = 185 Newsletter Distribution

The May-June 2021 issue is posted on our web site. Also:
160 copies sent via email (as PDF file)
 3 paper printed copies sent via US Mail.
 Copies are also sent to potential members, other clubs,
 the National Ski Club Newsletter, etc.

Mt. High Credit Card Payments

We are now able to process your payments by **credit card**. We are doing it through PayPal.

No need to have a PayPal account to make a payment by credit card. Just go to our new web page: **"Signup & Pay"** at: <http://www.mthigh.org/Signup-Pay.htm>

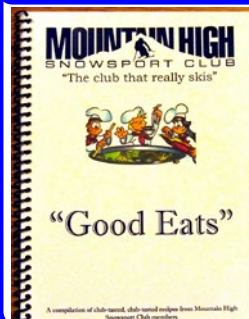
Count Your Ski Areas

Set up your own counter of ski areas visited. Use a modified form of John and Jewel's spreadsheet with 3 added columns, for up to 3 more people. Make one of these your own. Enter a "1" for every ski area visited. See: <http://www.mthigh.org/Documents/North-American-Ski-Areas-2021-02-27.xls>

Stories from Shred Hood

The website <https://shredhood.com/> is all about Mt. Hood. Several new articles for this season:

- * [Shooting Extreme Skiers](#)
- * [Looking back at Powder February](#)
- * [Snowboarding Then and Now](#)

Mt. High Cookbook

This 34 page cookbook is available for \$10. It has soups, salads, entrees, desserts, from our club members.

The cookbook includes recipes from the late Swiss chef Kurt Mezger. Contact Debbi Kor: ijustwannarun1@comcast.net, or call 503-314-7078.

Stories from Seniors Skiing

A good resource for skiers and riders of all ages. Check out: SeniorsSkiing.com. Subscribe to weekly or monthly emails from them. Click on the Community tab and select "Subscribe". Examples:

- * [Top to Bottom of Tombstone, Park City](#)
- * [Looking Back: US Season Wrap](#)
- * [Top to Bottom at Telluride](#)



Emilio Trampuz
 Mountain High Newsletter editor
 4742 Liberty Rd. S., #296
 Salem, OR 97302
 Please check our web site,
www.mthigh.org
 for updates.