



Lift Lines

= No. 175-176, July-Aug. 2015 =

Mountain High Snowsport Club, PO Box 2182, Portland, OR 97208



Mt. High Winter Adventures

We'll try something new this winter: 2 week-long ski trips in the same winter. We think our club has grown large enough for this. Please don't prove us wrong! Sign up for at least one or both of these trips! Both are very unique.

The **Canada trip** in January will explore the interior of Super-Natural British Columbia. We'll visit **Silver Star** (a challenging and diverse ski area) and **Sun Peaks** (the second largest in Canada).

If you haven't been on any of the Canada Ski Safaris, this is your chance to experience the best of Canada! See page 11.

The **Montana trip** will visit some really hidden gems. The **Montana Snowbowl** will give you a good workout. Then we'll spend a couple of days at the **Discovery Mt. ski area**, large, very challenging in places, with good snow and no crowds. We'll end the trip with 3 nights and 2 days at the **Lost Trail Powder Mt. ski area** which is open only Thursday - Sunday, and we will arrive there on Thursday morning - to hit all that untouched powder! Page 12.



Sun Peaks

Note the color code.
Our club is blue.

2015 CALENDAR

Blue: Mountain High events
Red: NWSCC / FWSA / Multi-club
Black: General events

JULY

July 27 (Mon.): Mt. High Board meeting

AUGUST

Aug. 22 (Sat.): Mt. High Picnic +bike
Aug. 27-30: Rafting on the Deschutes
Aug. 31 (Mon.): Mt. High Board meeting

OCTOBER

Oct. 3 (Sat.): Seafood Party
Oct. 4 (Sun.): Timothy Lake Bike Ride

NOVEMBER

Nov. 6-8 (Fri-Sun.): Ski Fever Show
Nov. 9 (Mon.): Ski Fair - NWSCC

JANUARY 2016

Jan. 24-30: Canada trip -Silver Star, Sun Peaks

FEBRUARY 2016

Feb. 21-27: Montana trip Discovery, Lost Trail

March 2016

Jan. 18-20: Crystal Mt. trip

Mt. High Summer Fun



Picnic & bike ride (August 22)



Rafting, (Aug. 27-30)



Seafood Party (Oct. 3)



Timothy Lake bike ride (Oct. 4)

Remembering Andrea Foss



Andrea Foss, a former member of Plaza Ski Club, passed away quietly on June 22, 2015. Andrea, and her husband, Dick, met on a Plaza Ski Bus in 1983, and were married in August, 1984.

Andrea and Dick were very active in Plaza, attending

our nearly-annual trip to Mt. Bachelor, along with many of the parties and outings that we had. For several years, they hosted an annual Christmas Ships party, at their beautiful floating home on the Willamette River.

Dick was a past president of Plaza, with the lovely Andrea by his side. They loved to travel, and most always went to sunny spots, such as Hawaii and Mexico. Dick said "there was her smile, and then there was her "vacation smile", that he will never forget. Those of us who knew her, will miss her warmth and graciousness.

Debbi



Bike Rides, Highway Cleanup

Q: I enjoyed those History Bike Rides from Timberline to Rhododendron. Will there be one this year?

A: We'd love to do more of those rides. However, the construction and blasting on Highway 26 just west of Government Camp has disrupted our regular route. All alternatives to highway 26 and access to Laurel Hill have been cut off. We'll have to wait and see if something might open up after the construction is done next summer.

For the same reason, our Highway Cleanup had to be cancelled this summer.

Watch the trucks hauling off all that rock. But join us on the Timothy Lake bike ride, page 8.



Mt. High Cookbook



Many years ago, the Plaza ski club (one of our parent clubs that in 2000 merged with the Edgeset Club to eventually be renamed Mountain High) published a cookbook that contained contributions from many of our club members. The cover of that cookbook is shown here.

Let's do it again!

Let's gather a bunch of recipes, including maybe some of those for the winning chocolate desserts in recent years. And maybe also a recipe for the salmon and other seafood presented at our Seafood parties.

Any other recipes from our club members are welcome! Please send your contributions to Debbi Kor, ijustwannarun1@comcast.net

Just to whet you appetite, here are a couple of recipes already submitted:

NOTE: A photo of your finished meal isn't required, but if you have one, send it in. It might help.

Also, just the fact that you are a club member is sufficient connection to the club. But if your recipe has some additional connection to the club, let us know.



Potato & Green bean soup

Enjoyed by Kurt Krueger and Emilio during their Steamboat, Colorado trip.



Flour-less Panama Torte

Won in the healthiest (lightest) category at our Chocolate Party in 2012

World Naked Bike Ride

June 27 (Saturday).

Five of our club members joined a crowd of about 10,000 cyclists in the Portland Naked Bike Ride. They met at 7 pm at the Barley Mill Pub, 17th and SE Hawthorne.

The ride started at 9 pm from Colonel Summers Park, (SE 20th & Belmont). Technically, our members were not entirely naked. They wore swimsuits, leis, and helmets!

This event has been held annually in Portland since 2004, and it is just one of over 100 such rides around the world. It originated as a protest against society's dependency on oil. Today, especially in Portland, Oregon, many people ride to promote cycling not only as a viable mode of transportation, but a form which should be celebrated! More about WHY, see video at: <http://pdxwnbr.org/why/>



Ski Patrol Dogs Will Make You Smile

If you are ever caught in an avalanche, seeing this friendly dog's face will be the best thing you've ever seen in your life.

See how avalanche rescue dogs are trained at Snowmass, Colorado, in this short video posted by Teton Gravity Research, See the many ways they have to reach the scene of an accident.

<http://www.tetongravity.com/video/lifestyle/the-ski-patrol-dogs-of-snowmass-will-make-you-smile>

Big Mountain Jesus

On our recent trip to Whitefish Mountain Resort, Montana, formerly known as Big Mountain, we saw a statue of Jesus on top of a ski run. Thanks to Colleen Myers for alerting us to a [lawsuit](#) about this statue.

A federal district judge in 2013 said the Flathead National Forest could reissue a 10-year permit for the statue that has stood along a ski run at the Whitefish Mountain Resort since 1954.

In hopes of getting the decision reversed, attorney Rich Bolton told the 9th U.S. Circuit Court of Appeals panel on July 7, 2015 that the statue violates the constitutional prohibition on Congress making any law regarding an establishment of religion.

A Montana-based Freedom From Religion foundation member, Pamela Morris, would like to ski at Big Mountain but has avoided it for decades since encountering the Jesus statue as a teenager.



Judge Smith countered that the statue is only visible from a small portion of the resort and it's possible to ski all day without seeing it. In fact, you have to go looking for it!

Regardless of the lawsuit, what is Jesus looking at? He is blessing the Blacktail ski area. Maybe he'd like to ski there, but he is stuck at Whitefish!

MOUNTAIN HIGH

Upcoming events

SNOWSPORT CLUB

Mt. High Picnic - Club Reunion**Aug. 22 (Sat.)**

We are trying to bring together all our members, new and old, past and present. We are inviting all former club members to come to the picnic. Let's make this into a club reunion of sorts. Details on next page.

Contact **Debbi Kor** ijustwannarun1@comcast.net or (503) 314-7078.

Mt. High Seafood Party**Oct. 3 (Sat.) 6:30 pm.**

Our annual end-of-summer seafood party will be held on this day. We are still working on the details, so stay tuned. But reserve the date!

Questions? Contact **Debbi Kor** ijustwannarun1@comcast.net or (503) 314-7078.

**Ski Fever & Snowboard Show - Expo Center****Nov. 6-8 (Fri - Sun.)**

Admission: \$14.

Big annual ski show at the Expo Center. Great deals on ski clothing and equipment. Many freebies.

For more info see: www.portlandskifever.com.

NOTE: The NW Ski Club Council will not have a booth at this Show this year. Instead, the NWSCC will participate in the **Ski Dazzle Show** in **Seattle** on the same weekend. Contact **Mary Olhausen**, 503-880-7383, omary52@comcast.net

NWSCC**Ski Fair at the Airport Holiday Inn****Nov. 9 (Monday) 6-10 pm** Admission: FREE.

A one day event organized by skiers for skiers, at the **Conference Center** next to the **Airport Holiday Inn**, 8439 NE Columbia Blvd.

Meet local ski clubs and ski areas. participate in the **Silent Auction, Raffle**, and more! See what's new. As part of the auction, you can get great deals on lift tickets, lodging, ski trips, ski gear, and more.

For questions about the Ski Fair, contact **Mary Olhausen**, 503-880-7383, omary52@comcast.net

You can also **renew your club membership** at our club's booth. To volunteer to staff the Mt. High booth, contact **Karen Michels**, skiklynn@gmail.com, 503-984-9210.

PRESENTED BY

2015 SKI FAIR

ONE NIGHT ONLY!
Monday, November 9

Holiday Inn Portland Airport
8439 NE Columbia Blvd
Portland, OR 97220

6:00 pm - DOORS OPEN

Admission is FREE and OPEN TO THE PUBLIC
No Host Beverages
DOWNHILL, CROSS-COUNTRY, SNOWBOARDING, ...
ALL KINDS OF SNOWPLAY!

HIGHLIGHTS:

- * Silent Auction
- * Ski Resorts
- * Ski Retailers
- * Ski Clubs
- * Sports Clubs
- * Mt. Bachelor
- * Mt. Hood Meadows
- * Ski Bowl
- * Timberline
- * Join a Club
- * Buy new Gear
- * Plan Ski Trips
- * Get discounted season passes

NWSCC NORTHWEST SKI CLUB COUNCIL
Contact: Mary Olhausen
Phone: 503-880-7383 Email: omary52@comcast.net

Click on the flyer for a larger view.
Then print it and post it somewhere.

Mt. High

Picnic & Bike ride. A club reunion!



August 22, (Saturday). Click here for [map](#) on our website.

Place: **Sellwood Park**, Picnic area A

9:30 am Bike ride (meet at the lower parking lot);

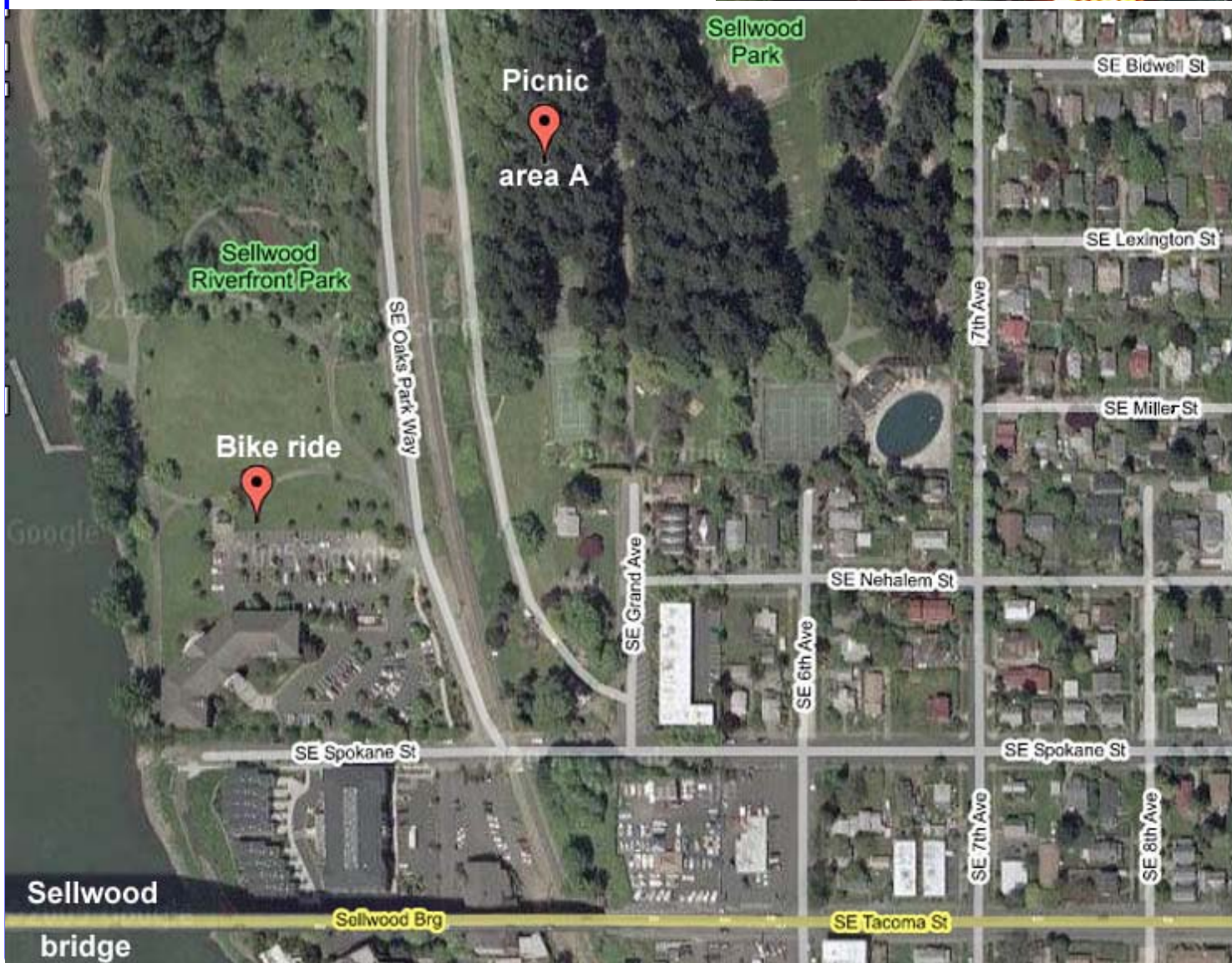
11:30 am Picnic starts. 12:00 noon Food served.

All current and former members of the clubs known as Plaza, Edgeset, and Mountain High are invited!

A variety of gourmet sausages will

be provided by the club, but it's mostly a **potluck**. So, bring some food, some drinks, and maybe a chair.

Directions: Immediately after crossing the Sellwood bridge (if coming from the west), turn left onto **6th Ave.**, or at the first left turn possible. Park and enter the park on foot by following **SE Grand Avenue** (from the south), and follow the path for abt. 100 yards. Our picnic area is on the left side of the path. See map. "Not being able to find us" is not a valid excuse!!!



Mt. High

Deschutes River Raft Weekend



Aug 27-30, 2015. Our annual tradition is back for your fun and enjoyment! A weekend of rafting and frolicking in the sun on the Deschutes River at Maupin, Oregon.

Contact: Allan Paraskeva at 503-201-1243 or alnbeth@gmail.com

or: Nancy Pratt at 503-593-9427 or Treasurer@mthigh.org

Reservation & payment deadline: August 15th.

Camping: Thursday, Friday and Saturday night in Maupin City Park. Camp sites at new location (see next page). RV space available for an additional \$25 a night. Kids (8-20) are welcome and are the respon-

sibility of the parent at a cost of \$50.

Rafting: (Row, Paddle or just ride) Friday and Saturday. We'll provide the rafts. On Friday, we'll assemble at Maupin City Park and then raft 11 miles from Harpham Flat to Sandy Beach. On Saturday, we'll start from the mid-point and raft downstream in the morning, and then do the upper half in the afternoon (to avoid the crowd).

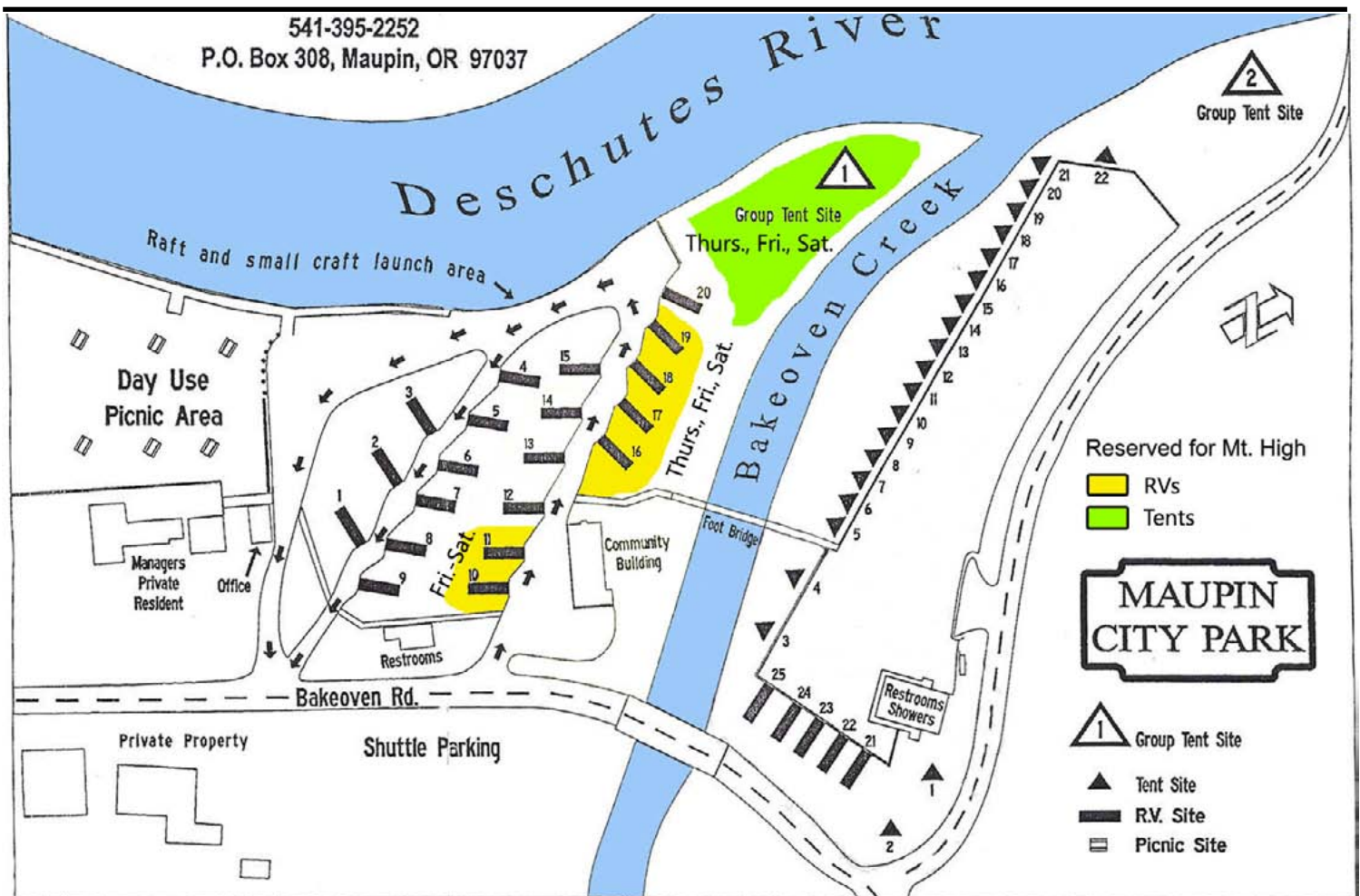
Food: Saturday night dinner will be potluck. For other meals (breakfasts, lunches, Friday dinner), bring your own food and drinks, or plan to dine in any of Maupin's fine dining establishments. Also, bring quarters for the showers!

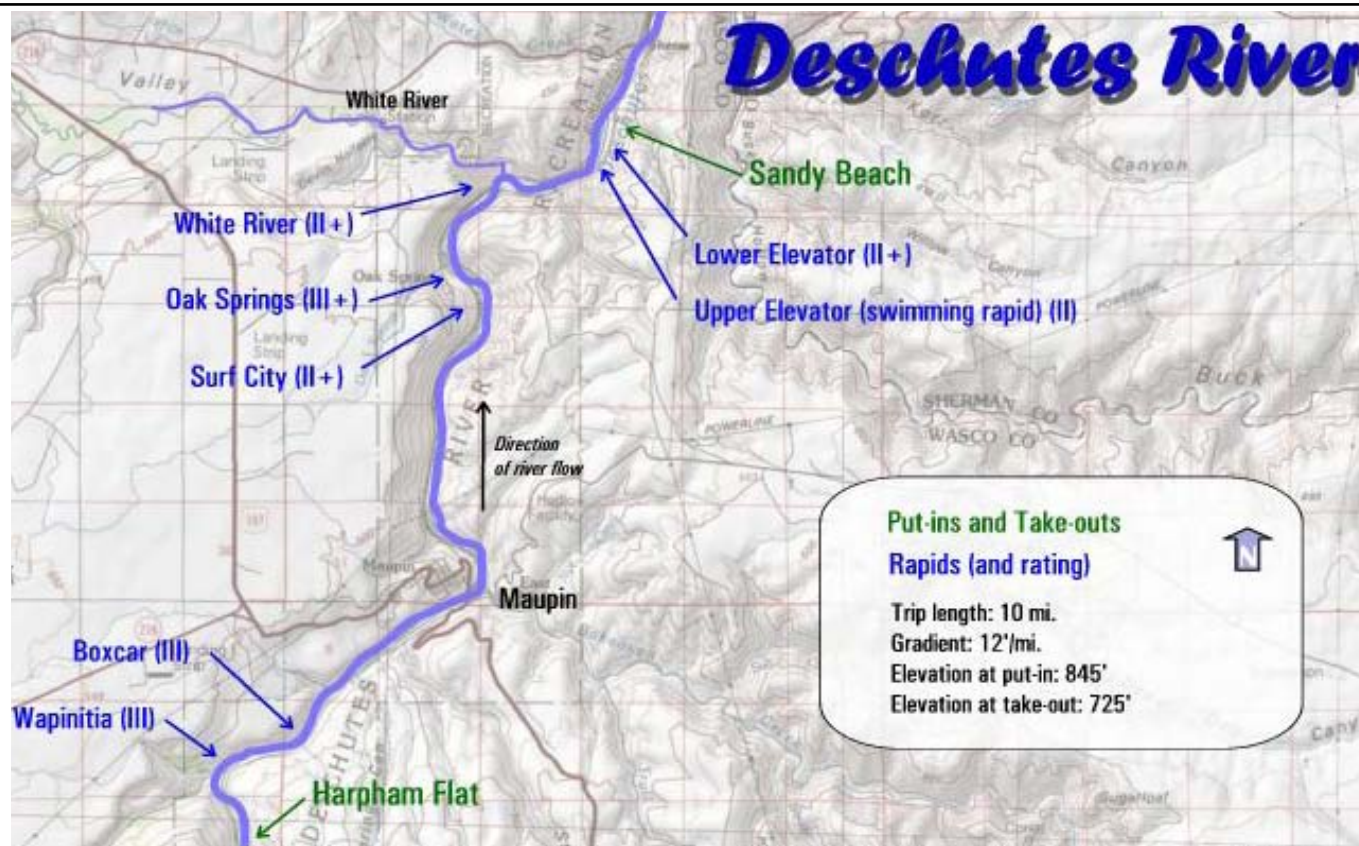
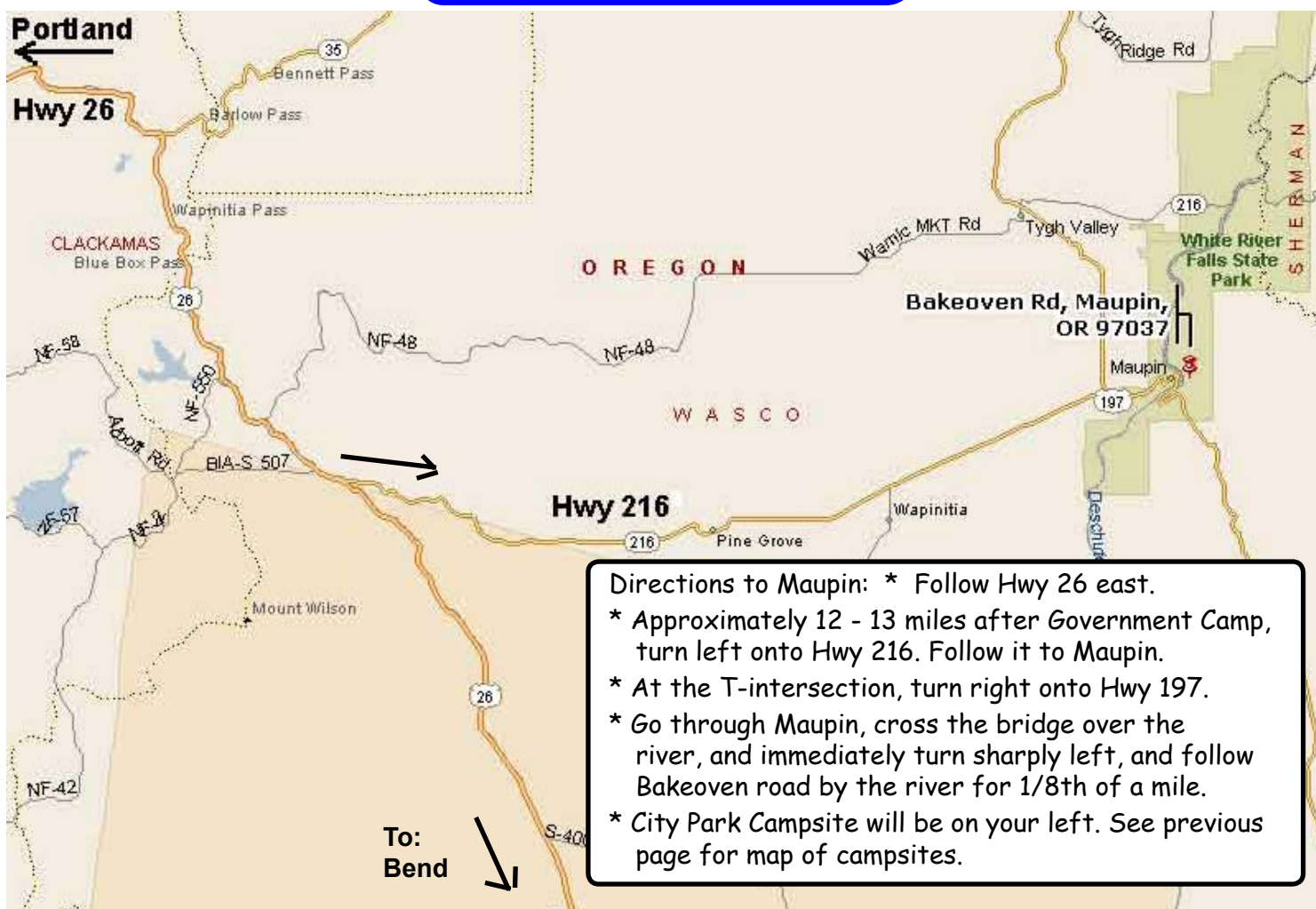
Camping & rafting = \$75.00 pp, (Non-members \$90.00)

RV space is available for an additional \$25 per day. or \$75 total.

NOTE: The Deschutes River is dam controlled, so water levels are not an issue.

To sign up, use the Dough Transmittal form, page 13, or print the form from our web site. See the [Forms](#) page at: <http://www.mthigh.org/Forms.htm>.





Mt. High Golf Scramble**Sept. 12 (Saturday) 3 pm.**

We are planning a Scramble at:
**Lake Oswego Municipal
 Golf Course**
**Saturday, September 12th
 at 3 pm**



We will need to know as soon as possible if you are planning to play. Also if you have a handicap we will need that, if not tell us what your score has been. We are going to make this as fair as possible. If you want to play with a certain person, we will try to make it work. **Deadline to sign up is August 28th.** (If we do not have enough interest, we will cancel this event.) Terry and I hope to see you in September.

- Cal Eddy

Please contact either:

Terry Swan 503-729-3435, swans761@juno.com

Cal Eddy 503-805-8606, baebaw@ccgmail.net

PACRAT Racing and NASTAR

In case you don't already know, Portland area PACRAT racers purchased their own timing mechanism in 2010, which gave them greater freedom and flexibility to organize their own races and to also organize a few NASTAR races on top of the regular PACRAT races.

They organized the first NASTAR race at Mt. Hood Meadows in January 2011, and they have been organizing NASTAR races ever since.

See the latest NASTAR news on the next page.

See photos and videos of various PACRAT races on our club's web site's PHOTOS page at: http://www.mthigh.org/Photos.htm#PACRAT_Racing

Also, check out PACRAT's Facebook page at: <https://www.facebook.com/groups/PACRATRacing>

If you want to join one of our 10-person race teams next winter, contact any of our team captains, or if you are not sure which team to join, contact our Racing Director, **Bruce Kuper**, at bruku@comcast.net

Ski Challenge

The NW Ski Club Council wants to encourage you to see and ski more places, and don't forget the small ones!

Ski or ride any 7 or more resorts during the 2014-2015 ski season to be eligible to win a prize. Just save your lift tickets or receipts, and mail them in to the NWSCC.

Ski areas that count are all those in **Oregon, Washington, Alaska, Hawaii**, as well as several in **British Columbia** (Big White, Sun Peaks, Whitewater, Kicking Horse, Fernie, Kimberley and Nakiska), one in **California** (Mammoth Mt.), **Colorado** (Aspen/Snowmass), 3 in **Idaho** (Brundage, Schweitzer, and Sun Valley), and 2 in **Wyoming** (Grand Targhee, Jackson Hole).

Mail your lift tickets or receipts to the Northwest Ski Club Council, Ski Challenge, 5331 SW Macadam Avenue, Suite 258, Box 438, Portland, OR 97239.

Winners will be announced in December.

Mt. High**Timothy Lake Bike Ride**

**October 4, 2015. (Sun.)
 11 am. Cost: Free.**

Join Mt High Club members in a mountain bike ride around Timothy Lake. We'll meet at the Little Crater Lake. We will have 2 distances to choose from:

14 miles around the lake, or
 7 miles halfway.

Car shuttles will take care of 7 miler participants. We will make a small side trip to Little Crater Lake. Early dinner will be on the way back at The Taco Shoppe in Govy Camp.

The ride takes place October 4th after the crowds are gone. We will meet at the lake at 11 am. This is a beginning mountain bike trail. Operative word here is "mountain bike". There are a few parts of the trail that are not suitable for a road bike. The trail is at water level in the trees with numerous views and twists and turns.

Leaders:

John Davis, hikedance@gmail.com, and
 Emilio Trampuz, Emilio2000@earthlink.net.

NASTAR Joins the US Ski Team

Reprinted with permission from article by Seth Masia in the Skiing History magazine, May-June, 2015

Young medal winners at 2014 NASTAR Championships with Ted Ligety (left) and Sacey Cook (right)



Photo: US Ski Team

USSA will assume control of NASTAR racing.

The U.S. Ski Team will assume operational control of NASTAR. The announcement was made May 4 at the National Ski Areas Association annual convention in San Francisco by Tiger Shaw, president/CEO of USSA, and Andy Clurman, president/CEO of Active Interest Media (AIM). AIM owns the NASTAR brand, along with SKI and Skiing magazines and Warren Miller Entertainment.

NASTAR (National Standard Race) for recreational skiers was launched in the winter of 1968–69 as a program of SKI magazine. It was conceived by longtime SKI editor and current ISHA chairman John Fry, and inspired by the French Chamois instructor racing proficiency program, which used mathematical percentages to compare times.

NASTAR was initially sponsored by the Schlitz Brewing Company. The first national pacesetter was 1964 Olympic bronze medalist Jimmie Heuga. Nature Valley has been its most recent main sponsor.

NASTAR is currently hosted at 115 resorts nationwide and generates more than 165,000 racer days each year. Using the NASTAR handicap system, skiers at local resorts can compare their times against those of top U.S. Ski Team athletes, and against other recreational skiers. NASTAR is thus viewed as a unifying influence in U.S. skiing, enabling a NASTAR racer from Vermont, for instance, to race while on vacation out West and get a legitimate comparison of performance. Fry conceived the program as skiing's equivalent of par in golf. At one time, versions of NASTAR existed in Europe and Canada.

SKI contracted for the program to be operated for many years by Bob Beattie's World Wide Ski Corporation, after Beattie left the Ski Team in 1969. In recent years, NASTAR has been managed by Bill Madsen in Aspen. It suffered some neglect during Time Warner's ownership of SKI. It suffered another blow in 2012 when Vail Resorts pulled out to launch its own EpicMix racing series, held at Vail, Beaver Creek, Breckenridge, Keystone, Heavenly, Kirkwood and Northstar. USSA spokesman Tom Kelly suggested that Vail may be induced to return to the NASTAR fold.

USSA will assume operational control of NASTAR beginning this year, including program and event management as well as sponsorship and media rights. Shaw sees the partnership as a vital part of the USSA's efforts to draw more young skiers into alpine racing across America. It expects NASTAR to become a recruiting tool for the USSA's 400-plus local clubs across the country.

U.S. Ski Team athletes like World Cup winner Steven Nyman, Olympic champions Ted Ligety and Julia Mancuso, world champion Daron Rahlves and U.S. champion Kaylin Richardson and others have played a role as NASTAR pacesetters or ambassadors. The team plans to integrate more athletes into the program, and maintain focus on NASTAR's biggest event, the NASTAR National Championships held each March.

A complete history of NASTAR by Jim Fain can be found at www.skiinghistory.org/resources/history-nastar.



Photo: US Ski Team

US Ski Team champions Mikela Shiffrin (far left) and Ted Ligety (far right) with USSA CEO Tiger Shaw (center left) and AIM CEO Andy Clurman (center right) at the May 2015 press conference in San Francisco.

NOTE: You can subscribe to **Skiing History** magazine at www.skiinghistory.org. One year = \$49, and it includes a free subscription to Ski Magazine.

MOUNTAIN HIGH**Season Pass Deal****SNOWSPORT CLUB****Powder Alliance**

How would you like to ski at 13 ski areas for the price of one?

This is now possible, thanks to the alliance forged between 13 ski areas in the western USA. The deal is that anyone with a season pass from any of these ski areas receives not only unlimited skiing at their home ski area but also 3 free lift tickets at each of the other ski areas.

The Powder Alliance consists of the following 13 ski areas:

Timberline (OR), Mt. Hood Skibowl (OR), Silver Star (BC), Schweitzer Mt. (ID), Bridger Bowl (MT), Stevens Pass (WA), Sierra-at-Tahoe (CA), China Peak (CA), Mountain High (CA), Snowbasin (UT), Snowbowl (AZ), Crested Butte (CO), and Angel Fire (NM). See more info at: <http://www.powderalliance.com/>.

In effect, you get 13 resorts, 135 lifts, 934 trails, and 29,282 vertical feet. All for the price of one season pass! There is no additional charge for the Powder Alliance deal. Just get a season pass (a Fusion Pass for Oregonians).

**How it works for Oregonians**

For Oregonians to make use of the Powder Alliance deal they have to purchase the **Fusion Pass**, which by

itself gives you unlimited skiing at both Timberline and Skibowl.

In addition, we will now also get **33 free lift tickets** to the other 11 ski areas (3 lift tickets to each one of them). The only restriction to the other ski areas is that you cannot use this deal on **Saturdays** or **holidays**. Those are the only blackout days.

Adults under 65 will pay \$499 for this pass.

Adults 65 - 70 can purchase the pass for just \$249.

Those over 71 get free skiing at Timberline, but not necessarily at all the other ski areas. Skibowl charges about \$50 for a season pass, and so do many other ski areas, so you might still consider purchasing the Fusion Pass to enjoy the Powder Alliance deal.

Those planning to join us on our Mountain High Canada trip to Silver Star this coming winter will be able to ski free at Silver Star in January 2016.

NOTE: If you buy a new Subaru, the Fusion Pass you get with it doesn't qualify for the Powder Alliance

Why This is Important

In the Fall, we will publish a comparison chart of all season passes, as we have done in the last few years. But there is a reason we want to talk about the **Fusion Pass/Powder Alliance** deal right now.

In January 2016, we'll be organizing a trip to **Silver Star**, the latest addition to the Powder Alliance. Everyone is welcome to sign up, but those who purchase a Fusion Pass (for Timberline and Skibowl) for next season will be able to ski for free during those 3 days at Silver Star. In other words, your trip will be much cheaper. You will be able to save approximately \$180 - \$200, just on this one trip alone.

We wanted to give you plenty of time to think about it and decide which season pass to buy.

We did a similar Powder Alliance based trip to Schweitzer Mountain (Idaho) the winter before last. On that trip, only about half of the participants had the Fusion Pass. One of the reasons is that we didn't announce the trip until about September, and by that time, some people had already purchased the Mt. Hood Meadows season pass, and they couldn't afford to buy both passes.

Unfortunately, Mt. Hood Meadows is not part of the Powder Alliance. So, if you'd like a cheaper trip to Silver Star, chose your pass wisely.

Silver Star



Canada trip

Silver Star / Sun Peaks

January 24 - 30, 2016.

(5 ski days / 6 nights)

Silver Star has a mellow front side and a couple of really long cruisers on the back side, but it is famous for its steep and challenging powder runs on the back

side. Tree skiing. Powder. Best of all, a ski-in/ski-out village located not at the bottom but in the middle of the mountain. The village has a wild-west town look but in pastel colors! It is the locals' favorite mountain. And it is part of the Powder Alliance, which means that anyone with a Fusion Pass can ski there all 3 days for free!

Silver star has 128 named trails on 2,500' vertical, served by 12 lifts, 3 of which are hi-speed quads. Try to ski all the 5 distinct areas: the Front side (Vance Creek), the Back side (Putnam Creek), Silver Woods, Attridge, and Alder Point (advanced hike-to area).

Sun Peaks is just 2.5 hours away, and we'll move there for the last 3 nights. Sun Peaks has a European village themed ski-in/ski-out village, with a pedestrian street lined with boutique stores and cafes. There are 3 separate peaks to ski: Mt. Tod, Sundance, and Mt. Morrissey. Lots of hidden nooks and crannies. Don't miss the "Sticks" and the "Back in Time" trail on Mt. Morrissey. Also, you have to try some of the steep trails on Mt. Morrissey with washing machine names, such as "Agitator", "Static Cling", "Spin Cycle", etc.

Sun Peaks is the 2nd largest ski area in Canada. It has 133 named trails (one of them 5 miles long), 2,894' vertical, served by 11 lifts, 3 of which are high speed quads.

This will be a bus trip. We'll spend 3 days at Silver Star, and then an additional 2 days/3 nights at Sun Peaks. .

- Prices:**
1. Adult full price = \$1,095
 2. Senior full price = \$1,033
 3. Adults with Fusion Pass = \$888
 4. Seniors with Fusion Pass = \$849

Price includes all bus transportation, lodging, and lift tickets. Two lunches (on the way up and on the return trip) are included. Depending on the number of people that sign up (the more the better) and the rate of exchange with the Canadian dollar, if we end up with any surplus, we will include some breakfasts and/or dinners too.

Space is limited to 32 people. This trip will be open to members of other clubs after September 1, 2015, so please sign up early! To reserve your spot: Please send in a deposit check of \$250 per person.

Full payment due by November 15, 2015. No refunds after November 15 unless you can fill your spot. See our Mt. High Trip Cancellation Policy at .

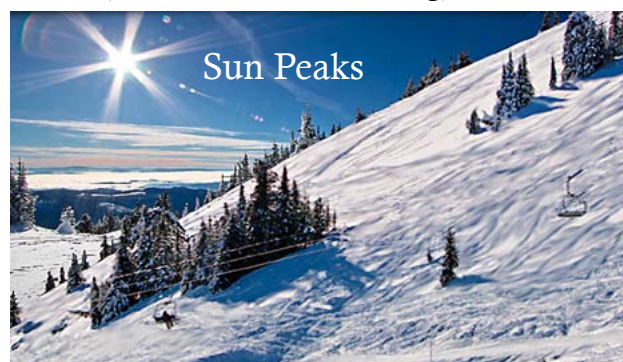
Print our **Dough Transmittal Form** and mail it in with your \$250 deposit check payable to Mountain High, PO Box 2182, Portland, OR 97208. If you are sending just a deposit, please indicate on the form which of the 4 categories you are in. Are you a Senior (65+) and do you intend to purchase the Fusion Pass (with the Powder Alliance deal).

Trip leaders:

Karen Michels, skiklynn@gmail.com, 503-984-9210
Emilio Trampuz, Emilio2000@earthlink.net, 503-378-0171.

More ski trips info at: www.mthigh.org/Trips.htm.

Sun Peaks





Discovery Mt.

Montana trip

Discovery / Lost Trail

February 21 - 27, 2016.
(5 ski days / 6 nights)

Something unique! Kurt Krueger and Emilio Trampuz did some scouting in February 2015 and discovered a couple of hidden gems in south-west Montana. We want to take you there.



Lost Trail Powder Mt.

Discovery ski area. This was quite a find! Last winter was a bad snow year in the West, but the day we arrived we got 4 inches of wonderful fresh powder here on top of a very good base. You want challenge? You'll find it here. Over a dozen double-black never groomed named runs in the back bowls! This is like skiing in the Chugach mountains, but without the need for a helicopter! Even the blue cruisers seem very long, with a consistent pitch.

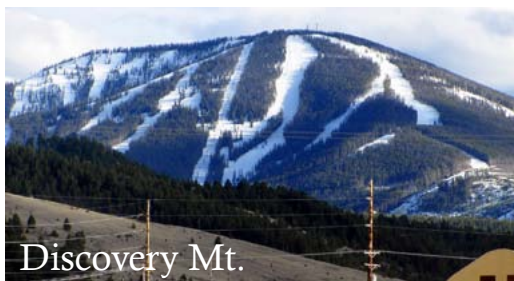
Discovery offers 2,400 vertical feet, 2,200 acres, served by 5 triples and 2 double chairs. Beginners and lower intermediates have their own hill. The best feature is: no crowds!

Lost Trail Powder Mountain. A great place, lots of powder, and no crowds. This place is open only Thursdays thru Sundays. Any snow that falls in the first half of the week will be untouched on Thursday. We will time our trip to arrive there on Thursday!

Lost Trail is located on the border between Montana and Idaho, and you can ski both sides. Yes, just like Look-out Pass, only bigger! It offers 1,800 vertical feet, served by 5 double chairlifts. The Montana side has several double-black runs. Best feature: No crowds, and an enormous field of perfectly spaced thin trees, where you can leave an unlimited number of fresh tracks while doing slalom laps through the trees.

Both Discovery Mt. and Lost Trail were featured in the 2014 Warren Miller ski film: "No Turning Back".

This will be a bus trip. A total of 5 days skiing and 6 nights. 2 days/2 nights in Philipsburg (Discovery ski area), and 2 days/3 nights in Hamilton (near the Lost Trail ski area). Bonus: we'll also hit the Montana Snowbowl, near Missoula, one day. This will be a very unique trip. Experience the pristine side of Montana!



Discovery Mt.

Price = \$825 per person.

Montana ski areas don't offer a senior discount. But we got a good deal on group tickets.

Price includes all bus transportation, lodging, and lift tickets. Two lunches (on the way up and on the return trip) are included. Also, a dinner in Philipsburg. Depending on the number of people that sign up (the more the better), if we end up with any surplus, we will include another dinner.

Space is limited to 32 people. We cannot include more because of lodging limitations. Also, this trip will be open to members of other clubs as well, so please sign up early!

To reserve your spot: Please send in a deposit check of \$250 per person, preferably by November 15, 2015.

Full payment due by January 15, 2016. No refunds after January 15, unless you can fill your spot. See our Trip Cancellation Policy.

Please use the **Dough Transmittal form** on the **Forms & Docs** page on our web site, or on the next to last page in our newsletter. Make check payable to **Mountain High Snowsport Club**, and mail it to: Mountain High, PO Box 2182, Portland, OR 97208.

Trip leader: Emilio Trampuz, Emilio2000@earthlink.net, 503-378-0171.

More ski trips info at: www.mthigh.org/Trips.htm.



Lost Trail

Mt. High

Crystal Mountain, WA



March 18-20, 2016 A weekend bus trip, 2 nights/2 days. We leave Friday around 5:00 pm. Lots of fun on the bus – this is the best way to get to know other club members! We'll return Sunday by 8:30 pm.

Crystal Mountain is the largest ski area in Washington with 3,100 vertical feet of skiing, with over 50 named runs. There's everything from gentle groomed cruising runs for beginners to challenging steeps - backcountry, glades, chutes and unbelievable black runs for the more adventurous. This is why SKIING Magazine voted Crystal Mountain the #7 top mountain in North America.



Linda McGavin
at Crystal Mt.



There is one 8-passenger gondola (included in all tickets as of this year), 2 six-pack hi-speed lifts, 2 hi-speed quads, 2 triples, and 3 doubles., serving 2,300 acres of lift served terrain, plus 500 acres of backcountry.

NEWS: Two lifts have been replaced by new ones :

1. **The High Campbell Chairlift**, for experts only, which was destroyed in an avalanche this past season, was replaced by a new fixed grip double chairlift made by SkyTrac, the only American ski lift manufacturer.
2. **The Quicksilver fixed-grip double chairlift**, serving intermediate terrain, was replaced by a fixed-grip quad lift.

Lodging: We'll stay in the town of Enumclaw, 45 minutes from the mountain. Most of us will be in queen beds, but the first 3 couples who sign up and request it will get a king bed. There is no breakfast in the hotel, but there's Charlie's Cafe, a breakfast place right across the parking lot that opens at 5 am.

Price = \$250. This includes all bus transportation, 2 nights' lodging, one dinner, and one lift ticket.

The reason for only one lift ticket is that on Sunday, March 20, Crystal Mountain is allowing all NWSCC club members to buy tickets at half price, but you have to go to the ticket window yourself and show your NWSCC card (i.e. your club membership card; you'll get it when you renew your club membership for this season).

Use the [Dough Transmittal form](#) on the page before last (or on our FORMS web page) to send **\$100 deposit**, due by November 30. Full payment due by February 15, 2015. No refunds after February 15 unless you can fill your spot. Contact trip leader **Linda McGavin** at (503) 652-2840 or e-mail Trips@mthigh.org.



FWSA

Far West Ski Assoc. Trips



Click on underlined blue links or go to www.FWSA.org.

FWSA SKI Week: Telluride, CO



January 30 - February 6, 2016. A week of skiing and racing. Price: \$1,210-\$1,430 per person depending on the type of lodging.

This includes 7 nights lodging, 5 lift tickets, banquet, council party, apres ski, races, & more. Air not included.

Mail check to: NWSCC Whistler Trip, 5331 SW Macadam Ave. Suite 258, Box 438, Portland, OR 97239. Contact: **Chris Ciardi**, c2blondie@hotmail.com, 503-297-5351
Barbara Bousum: BBousum@gmail.com 503-224-3584



FWSA European Ski Week:

Cortina, Italy. March 5-12,

2016. Price for land package: TBA pp. Includes: 7 nights lodging, daily breakfast, welcome and farewell parties, 5 nights dinner (2 nights free to explore local restaurants). Air and lift tickets not included.

Optional post-trip to Florence and Rome.

Make checks out to: Far West Ski Association (FWSA) for "FWSA 2015 Int'l Trip". Send to: Debbie Stewart, FWSA VP of Int'l Travel, 430 S. Church St., Visalia, CA 93277. FwsaIntlTrvl@prodigy.net



FWSA Mini Ski week:

Crested Butte, CO.

March 21 - 26, 2016 (5 nights / 3 or 4 days of skiing). Price = TBA.

Included: 5 nights lodging. Contact: Nancy Ellis, VP North American Travel, P.O. Box 9681, Truckee, CA 96162. 530-414-8261 [C]

Timberline Music Festival

September 7, 2015. (Monday, Labor Day)

Annual Timberline Lodge American Roots Music Festival. Volunteers needed to staff the museum booth at this event. Music runs noon to 7 pm. Volunteers do a one hour shift and then can enjoy the music for the rest of the day.

The Taco Shoppe 20% discount



Kevin Bastin, the owner of the Taco Shoppe in Government Camp and also a Mountain High member, has offered us an even better deal than in the past. Instead of just an offer on the burritos, our members can now

get a **20% discount off of any item on the menu!** Thanks Kevin!

So, stop at **The Taco Shoppe** in Govy, right next to the Mt. Hood Museum, and get ready to experience something delicious. And say thanks to Kevin!

Mt. Hood Museum Needs Volunteers

August 8 - 9, 2015: Steiner Cabin Tours

With a bigger event this year the Museum in Government Camp needs more volunteers. Positions include: Greeters at the cabins, ticketing, parking attendants, lecture host, museum docents. Call or email the museum to pick your date and discuss your desired position. Phone: 503-272-3301, or email: info@mthoodmuseum.org.

Star Party at Timberline

July 18 & August 22, 2015 . (Saturday, 8:30 pm)



Timberline will host a Star Party in the Salmon River Parking Lot just east of the Lodge, beginning with a brief introduction at 8:30 followed by star gazing throughout the evening.

Astronomy Professor Dr. Todd Duncan of the Science Integration Institute, along with a number of amateur astronomers, will provide

telescopes for the public to view the Moon, Saturn, ancient star clusters, galaxies, dying stars, and the center of our Milky Way galaxy.

See more at: <http://www.timberlinelodge.com/event/star-party/>.

MOUNTAIN HIGH**Contacts / Club info****SNOWSPORT CLUB****Man & Woman of the Year**

Our club's Man and Woman of the Year for 2015 are: **Emilio Trampuz** and **Terry Swan**.

Send in your nominations for 2016 to any member of our Board by the end of February.

**Mountain High Meeting**

Usually last Monday

July 27, Aug. 31 (Mon.): Open to all who want to get involved with the club. Gather at **6 pm**. Start at **6:30 pm**.

Location: Round Table Pizza, 10070 SW Barbur Blvd. (near Capitol Hwy.)

Mountain High snowsport club contacts:

President: Debbi Kor H: 503-314-7078,
Vice-President: Terry White H: 503-781-4558
Secretary: Lisa Scribner H: 360-904-1302,
Treasurer: Nancy Pratt H: 503-593-9427,
Past President: Kurt Krueger H: 503-625-1492,
Membership Director: Karen Michels H: 503-984-9210,
Race Director: Bruce Kuper H: 503-975-8039,
Newsletter Editor: Emilio Trampuz H: 1-503-378-0171,
Social Activities: Debbi Kor H: 503-314-7078,
Golf: Cal Eddy H: 503-805-8606,
Hiking: Chris Brooks H: 503-764-5323,
Bike rides: Jackie Bonillo H: 503-663-3359,
Bike rides: Karen Michels H: 503-984-9210,
Biking / Hiking: Chas Westergren H: 971-506-7699,
Mid-week skiing: Ken Brundidge H: 503-720-0620,
Trip Director: Linda McGavin H: 503-652-2840,
Trip Leader: Sandra Smith H: 503-646-4591,

President@mthigh.org
TWhite223@msn.com
LScribner98@yahoo.com
Treasurer@mthigh.org
President@mthigh.org
skiklynn@gmail.com
bruku@comcast.net
newsletter@mthigh.org
ijustwannarun1@comcast.net
baebaw@ccgmail.net
jruffman@aol.com
jbon1960@comcast.net
skiklynn@gmail.com
Chashisk@Yahoo.com
KenBrundidge@comcast.net
Trips@mthigh.org
sandra@pacifier.com

General info:
info@mthigh.org

Web site:
www.mthigh.org

DOUGH TRANSMITTAL FORM

Mail check payable to: Mountain High Snowsport Club, PO Box 2182, Portland, OR 97208.

PLEASE PRINT CLEARLY: ☐ New membership or ☐ Renewal

Name(s): _____ Birthday (MM/DD) _____

Address: _____

Phone (Hm): _____ Phone (Wk): _____

Email (Hm): _____ Email (Wk): _____

Email Preferences: - Newsletter (once a month): ☐ yes, link only ☐ yes, complete file ☐ no
☐ No changes - Club news & events (between newsletters): ☐ yes ☐ no
(same as last year) - Other ski news (NWSCC, FWSA, ski areas, trips...): ☐ yes ☐ no
- Is it OK to share your email address with other club members? ☐ Yes ☐ No

By joining the Mountain High Snowsport Club, I acknowledge that I am responsible for my own safety and conduct. I hereby agree to be bound by all Mountain High Snowsport Club bylaws and regulations, including the Trip Cancellation Policy. I hereby release Mountain High Snowsport Club, and any of their agents (officers, directors, trip captains, and any other Club representatives) from liability for personal injury, property damage, or any other liability of any kind connected with my participation in any club-related activity. Furthermore, I agree to indemnify and hold the Club and any of their agents harmless from any and all liabilities of any kind which may be incurred or asserted against the Club or any of their agents in any way relating to my negligence or willful misconduct connected with my participation in the club's activities.

Please take my money, and apply it toward the following Ski Club fun stuff:

	Deposit?	Paid in full?
<input type="checkbox"/> Annual Membership (Oct. 1, 2014 - Sept. 2015): Single (\$25); couple (\$40)	\$ _____	_____
<input type="checkbox"/> PACRAT Racing (2015) \$99 for the whole season . Team: _____	\$ _____	_____
<input type="checkbox"/> Rafting on the Deschutes (Aug. 27-30). Members: \$75, Non-members: \$90	\$ _____	_____
<input type="checkbox"/> RV parking for Rafting trip (Aug. 27-30). \$25 per day, \$75 total	\$ _____	_____
<input type="checkbox"/> Canada trip (Jan 24-30). Adult=\$1095, w/Fusion=\$888. Senior=\$1033, w/Fusion=\$849. Dep.=\$250	\$ _____	_____
<input type="checkbox"/> Montana trip (Feb 21-27). Total=\$825. Dep.=\$250 (Please circle your choice above)	\$ _____	_____
<input type="checkbox"/> Crystal Mt. trip (March 18-20). Total=\$250. Dep.=\$100	\$ _____	_____
<input type="checkbox"/> Other: _____	\$ _____	_____

Comments (For whom you are paying. Roommate requests,...): _____

Signature(s): _____ Date: _____

Signature(s): _____ Date: _____

See our Trips cancellation policy on our web site: <http://www.mthigh.org/Documents/Trip-Cancellation-Policy.pdf>

Checkmark all desired options.

Club membership = 304 Newsletter Distribution

The July-Aug. 2015 issue is posted on our web site. Also:
277 copies sent via email (as PDF files)
22 paper printed copies sent via US Mail.
 Copies are also sent to potential members, other clubs,
 the National Ski Club Newsletter, etc.

FWSA Diving Trip to Bonaire

Sept. 26 - Oct. 3, 2015

Diver Package Price: \$1115. Non-Diver Package: \$836.
 Single Supp. Add - \$372.00. Price includes:

- 7 nights at Plaza Beach Resort Bonaire in a Jr. Laguna Suite – based on Double Occupancy
- All meals daily & all drinks daily including alcohol
- Use of paddle boards, kayaks & catamarans
- 6 days of 2 tank boat dives & unlimited shore diving
- Unlimited Nitrox (32% for certified nitrox divers)
- Free WiFi
- Airport Transfers
- Bonaire Marine Park fee of \$25.00

Contact: Randy Lew, FWSA Dive Trip Leader, 7007 SW Iron Horse St., Wilsonville, OR 97070.

Cell: 530/304-0802 e-mail: FWSA13Randy@telis.org

Info: <http://www.fwsa.org/Travel/Dive/dive.html>

Count Your Ski Areas

Set up your own counter of ski areas visited. Use a modified form of John and Jewel's spreadsheet with 3 added columns, for up to 3 more people. Make one of these your own. Enter a "1" for every ski area visited. See: <http://www.mthigh.org/Documents/North-American-Ski-Areas-2014-5-25.xls>

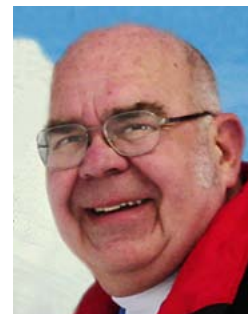
NWSCC Man & Woman of the Year

This year, our Mt. High Board chose to honor **Emilio Trampuz** and **Terry Swan** as our club's Man and Woman of the Year. Many other local clubs also submitted their choices to the NW Ski Club Council.

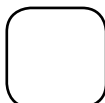
The NWSCC chose the following two among all the candidates. These are this year's NWSCC's Man and Woman of the Year:



Mary Olhausen
 NWSCC Past President



Lloyd Musser
 Curator, Mt. Hood Museum



Emilio Trampuz
 Mountain High Newsletter editor
 4742 Liberty Rd. S., #296
 Salem, OR 97302
 Please check our web site,
www.mthigh.org
 for updates.