



# Lift Lines

= No. 157, January 2014 =

Mountain High Snowsport Club, PO Box 2182, Portland, OR 97208



## From the editor



Did you check out our web site lately? We now have two webmasters! **Emilio Trampuz** and **Bruce Kuper**. Bruce has taken over the Racing pages. In fact, he has already added a whole new racing page to cover all the race-related events. Just like our ski trips have a page of their own, the racing events now have their own page.

Bruce and Emilio have been working quite well together so far, both in separating their roles and not stepping on each other's toes, as well as in cooperating where needed in the overlapping areas.

The 4th installment of **John and Jewel Andrew's** skiing all of North America delves into some real life examples of their adventures.

Notice that the number of **western ski areas** listed on our "Ski Areas" page (on the web site) has grown from 156 to 161. We have added a few that we had missed before. Can you ski all of those in your lifetime?

Check out the **news** on page 7. We have a new place to park when we go on ski trips. And we'll be having coffee on the bus too! And there are all kinds of deals on lift tickets.

We were a bit uncertain about the exact location of the park and ride in Sandy to catch the new **Mt. Hood Express bus** to Skibowl, Government Camp, and Timberline. We got the details now. See page 2. - Emilio

Note the color code.  
Our club is blue.

## 2014 CALENDAR

**Blue:** Mountain High events  
**Red:** NWSCC / FWSA / Multi-club  
**Black:** General events

### JANUARY

**Jan. 5 (Sun.): NASTAR Open** Cancelled  
**Jan. 12 (Sun.): PACRAT 1** - Skibowl  
**Jan. 26 (Sun.): PACRAT 2** - Meadows  
**Jan. 25 - Feb. 1: FWSA Ski Week**  
Beaver Creek, CO  
**Jan. 27 - Feb. 1: Idaho bus trip**  
Schweitzer Mt., Lookout Pass,  
Silver Mt.

### FEBRUARY

**Feb. 3 (Mon.): Mt. High Board meeting**  
**Feb. 8 (Sat.): King Winter Party**  
**Feb. 9 (Sun.): PACRAT 3** - Skibowl  
**Feb. 15 (Sat.): Mt. High Chocolate Party**  
**Feb. 22-27: FWSA Mini week** Snowbasin  
**Feb. 21 - 23: Mt. Bachelor bus trip**  
**Feb. 23 - Mar. 1: Lake Tahoe Sampler**

### MARCH

**Mar. 1 (Sat.): Ski the Glade Trail Day**  
**Mar. 2 (Sun.): NASTAR Open** - Skibowl  
**Mar. 6-15: FWSA Zermatt**, Switzerland  
**Mar. 8 - 9 (Sat.-Sun.): Hope on the Slopes**  
**Mar. 9 - 10 (Sun.-Mon.): Oregon Cancer**  
Ski Out  
**Mar. 16 (Sun.): PACRAT 4** - Meadows  
**Mar. 21 - 23: Leavenworth bus trip**  
Mission Ridge, Stevens Pass  
**Mar. 30 (Sun.): PACRAT 5** - Timberline

### APRIL

**Apr. 12 (Sat.): Ski to Defeat ALS**

### JUNE

**June 12-15 (Thur. - Sun.): FWSA**  
**Convention - Bend, Oregon.**  
**"Volcanic Paradise"**

## Let's Pray for Snow



So, where's the snow?

Looks like we haven't been praying hard enough! That Pray for Snow party was probably more partying than praying, and now we are all suffering the consequences!

Or maybe Santa knows that we've been bad, very bad, so he is giving us some coal instead.

Some snow is in the forecast, finally! But we need more!

So, get busy folks! Do some praying. Do the snow dance. Do something! Don't just sit there waxing your skis!

## Let's try the Mt. Hood Express bus from Sandy



We've been encouraging people to meet up in Sandy and carpool from there. This year, let's try to use the new Mountain Express bus service from Sandy to Skibowl, Government Camp and/or Timberline for just One way fare is just **\$2** (or \$1.50 if you prepay for 20 tickets). That's less than you'd spend on gas!

**Catch the bus** at the Forest Service Park & Ride, right on Hwy. 26, at a bus stop half way between Champion Way and 362nd (which is the Fred Meyer traffic light in Sandy). Turn into Champion Way to park at the Mt. Hood National Forest Information Center.

The most convenient time for us is:

1. Leave Forestry Service Park & Ride at **7:45 am**, arrive at Skibowl West at 8:32 am, arrive at Timberline at 9:00 am.
2. Depart from Timberline at **2:45 pm** or **4:45 pm**. arrive in Sandy at 3:58 or 5:58 pm.

See the schedule on the Clackamas County Mountain Express website, [www.clackamas.us/socialservices/documents/MTX%20schedule%2010-2013.pdf](http://www.clackamas.us/socialservices/documents/MTX%20schedule%2010-2013.pdf)

If you miss us there, try to connect with us on the Mountain using 2-way radios on channel **6-19**. But, this might not be easy. We often carry 2-way radios on ski trips to new places, but few of us seem to use them on our local mountain.

So, it's best to try to connect in Sandy and start the day together.

Only, which days will this happen? Well, there is no fixed schedule. If we find out there is a group of us going, we'll try to let everyone know via an email blast.

Also, remember that you can communicate directly with other club members using our online Forum. Feel free to announce your intentions to go skiing on a particular day.



See more photos at [www.mthigh.org/Photos.htm](http://www.mthigh.org/Photos.htm).



**MOUNTAIN HIGH****Upcoming events****SNOWSPORT CLUB****Skiyente****King Winter party****Feb. 8 (Saturday) 7:00 pm.**

Join the Skiyente Ski Club at Charlie's Mountain View Pub in Government Camp (Mt. Hood) to celebrate the crowning of King Winter 2014!

Tickets are \$15 and can be purchased at the door. Live music, door prizes and much more. For more info, contact [skiyente@yahoo.com](mailto:skiyente@yahoo.com) or Colleen Walter at: [colleenski64@yahoo.com](mailto:colleenski64@yahoo.com).

Doors open at 7:00 pm

Coronation at: 8:00 pm.

Band starts at: 9:00 pm

More info on the [Skiyente web site](http://www.skiyente.com)**Race Training**

Greg Dilger

**Fridays and weekends.**

Coach Greg Dilger holds Slalom and GS training every Friday, usually at Mt. Hood Skibowl or Timberline. These **training days**

are open to all who want to improve their skiing and/or racing skills. Meet at the day lodge or Outback lodge at 8:30. Training starts at 9 am. The training session costs \$35 on Fridays, or \$65 on weekends.

Contact coach Greg at: [gdilger2@yahoo.com](mailto:gdilger2@yahoo.com)

**Mid-week skiers**

**Q** How can I join the mid-week skiers?

**A** These are regular club members, just like you and me, who like to ski during the less crowded weekdays, especially when there is fresh powder on the slopes.

The group was started by **Harry & Lisa Scribner**. Then **George Yun** took it over, and right now the man in charge is **Ken Brundige**, [KenBrundidge@comcast.net](mailto:KenBrundidge@comcast.net)



Ken Brundige  
Mid-week skiing  
coordinator

Email him to get on his email list, or simply join the **mid-week Forum** and you will then receive email updates every time someone posts something there.

**Mt. High Forum**

As the new season kicks into gear, it's time to revive our club's forum. You can use it in various ways:

- To make announcements;
- To ask questions;
- To find buddies to ski with;
- To discuss gear & other issues.
- You can now post a photo too!

Join in the fun. Check it out by going to [www.mthigh.org](http://www.mthigh.org), and clicking on the [Forum](#) button. Or, just click on the word [Forum](#) here.

If you are new to the Forum, you can view all the messages, but if you want to post your own, please click on "**Join this Group**" in the upper right of the Forum page.

Note that we have a separate forum for mid-week skiers.

**Mt. High****Chocolate Party****Mt. High****DATE: Saturday, Feb. 15.****TIME: 7:00 pm****PLACE: Lisa and Harry Scribner**

1915 NW 90th St.

Vancouver WA 98665

Phone: 360-576-8178



**WHAT:** Our annual sweet party. Come to sample the goodies, or enter the contest yourself by bringing your own chocolate dessert. Four prizes will be awarded for:

- a) The **most chocolaty (or decadent)** dessert.
- b) The **most creative** dessert.
- c) The **lightest (healthiest)** dessert.
- d) The **Best work of art** or the **Most photogenic**.

After the three un-corruptible and un-briable judges pronounce the winner, everyone will be able to taste ALL the desserts, or as many as you can handle!

**CONTACT:** Please **RSVP** to:

**Lisa Scribner:** 360-576-8178 or [LScribner98@yahoo.com](mailto:LScribner98@yahoo.com)

## PACRAT News

### Pacific NW Area Clubs Recreational Alpine Teams



**Bruce Kuper**  
Mt. High Racing Director

Mt. High PACRAT teams can still use a few more racers to fill their teams. So, give it some thought, do you know anyone who you might want to join us racing this year?

Talk your friends into sharing the PACRAT experience with you. Let's see if we can get a couple more racers to fill the teams with vacancies.

If anyone needs assistance getting placed on a specific team, contact Bruce Kuper at: [bruku@comcast.net](mailto:bruku@comcast.net) or phone: 503-975-8039.

For more info on racing this winter please check out [www.mthigh.org/Racing.htm](http://www.mthigh.org/Racing.htm).

Looking forward to another fun filled season with all of you. - Bruce

Check out PACRAT racing with Mt. High Snowsport Club here: <http://www.mthigh.org/Racing.htm>

Hand out a poster: [http://mthigh.org/Racing/PACRATPoster\\_2014.bmp](http://mthigh.org/Racing/PACRATPoster_2014.bmp)

## NASTAR Race open to all

**Mar. 2** The NASTAR race at Mt. Hood Skibowl is open to all. Just show up. Bring \$10 for 2 runs, or \$20 for unlimited number of runs. Registration in the Outback Lodge 8 - 9 am. Fill out this [form](#).

## You Are Invited! - Colleen Hankins

### PACRAT



**Wants YOU!**

**For Fun & Camaraderie!**

For nearly 30 years PACRAT Racing (Pacific Northwest Area Clubs Recreational Alpine Teams) has offered adult ski club members an exciting and fun opportunity to participate in recreational alpine racing on Mt. Hood.

While some PACRATers have raced for years, many of our members have joined PACRAT as beginner and intermediate skiers and snowboarders.

If you are looking for team camaraderie and friendly fun competition - we are the league for you! Many racers join primarily for the social aspect and throw in some racing! Each PACRAT team consists of 10 racers and each racer is

## 2014 PACRAT Race Dates

Date	Location
January 12	Race 1: Mt. Hood Skibowl - <b>CANCELLED</b>
January 26	Race 2: Mt. Hood Skibowl
February 9	Race 3: Mt. Hood Meadows
March 2	NASTAR Open race Mt. Hood Skibowl Open to everyone. Registration in the Outback Lodge 8 - 9 am. Race starts at 10 am and continues till about 1 pm. Cost: \$10 for 2 runs, or \$20 for unlimited runs. Print the <a href="#">registration form</a> .
March 16	Race 4: Mt. Hood Meadows
March 30	Race 5: Timberline
April 6	Make up Race: Timberline This race will be held to make up for the cancelled January 12 race.

## Mt. High Team captains

Team name	Team captain	Email address
Avalanche Express	Gary Gunderson	<a href="mailto:ktgpx@frontier.com">ktgpx@frontier.com</a>
Blizzardos	Linda Eidemiller	<a href="mailto:2lindaloo@gmail.com">2lindaloo@gmail.com</a>
Chilled Brewskis	Brenda Becerra	<a href="mailto:LetsPlayOnTheMt@hotmail.com">LetsPlayOnTheMt@hotmail.com</a>
Frosted Flakes	Stevie Viaene	<a href="mailto:stevie.viaene@gmail.com">stevie.viaene@gmail.com</a>
Infra-Rats	Garth Eliason	<a href="mailto:gweliason@gmail.com">gweliason@gmail.com</a>
Lab Rats	Lonny Schiller	<a href="mailto:landkschiller@gmail.com">landkschiller@gmail.com</a>
Mixed Nuts	Samy Fouts	<a href="mailto:samyfouts@comcast.net">samyfouts@comcast.net</a>
Mt. Hoodlums	Phil Mant	<a href="mailto:phil6666@aol.com">phil6666@aol.com</a>
Rat Racers	Alan Bean	<a href="mailto:abean@nwgeotech.com">abean@nwgeotech.com</a>
Rattitudes	Chris Wiley	<a href="mailto:Chris2007@Yhuji.com">Chris2007@Yhuji.com</a>
Schussing Shysters	McCoy Smith	<a href="mailto:McCoySmith@comcast.net">McCoySmith@comcast.net</a>
Vertigo Madness	Tom Cansler	<a href="mailto:tomcansler@qualitytank.com">tomcansler@qualitytank.com</a>

handicapped after the first race and placed into one of 7 skill levels ranging from novice to elite based on individual time. All racers are also dual-scored under the NASTAR scoring system, so you can see how you compare on the NATIONAL level too! All racers who qualify may attend the NASTAR National Championships.

To join a team, the only requirements are to be 18, a member of a NWSCC club, (Mt. High Snowsport club is a member), and to pay race fees of \$95 for the season. Dues include your bib, 5 races, discounted race day lift tickets, après ski parties with door prizes and refreshments, pins for placement in your categories, NASTAR standings and pins, and an end-of-season "Rat Attack" Awards Party. This is the best "bang for your buck" entertainment value on the mountain!

Ski ya on the mountain!!!

Colleen Hankins  
Director of PACRAT Membership, 2013/2014



## Skiing North America with John & Jewel Andrew



### Part 4: Infinite Variety by Emilio Trampuz



During their travels, often a whole month on the road, John and Jewel Andrew have experienced an infinite variety of ski areas, from big to the super small. John says:

“Traveling to all 700 resorts is an adventure. We average nearly 20,000 miles of winter driving each year. Longest single trip was from Seattle to Newfoundland covering 13,000 miles in two sub-zero months, skiing at 45 resorts in 16 states and provinces, including **White Hills**, the easternmost resort in North America, near St. Johns, Newfoundland.”

Here's just one of their many trips, in John's own words.

### To Alabama and Back 31 ski areas in 30 days

The 31 ski areas we did on our trip to Alabama are pretty representative of what it's like to ski North America. On almost every trip the resorts range from several thousand feet of vertical to barely over a hundred. You find all kinds of weather: rain, snow, slush, mud, powder, ice. Temperatures from sunny and warm to 30 below on the same trip, sometimes on the same day top to bottom. When you're on a ski trip you live more like a long-distance truck driver than a destination skier. Satisfaction comes when you find places like Cloudmont (Alabama) and Blizzard (Idaho) - on the same trip.

Our goal was to ski the only ski area in Alabama, a place called Cloudmont. On this trip, we had company. Jewel and I had taken Paul and Carol Morford on a ski trip to Los Angeles and back the year before in our crew

cab pickup. Paul bought a new suburban and said he would provide the transportation the next year. I called Cloudmont. They said they had snow and thought it might last at least a week. We quickly put my Thule ski capsule on Paul's suburban and decided to start driving the next day.

I told Paul, “Be careful about overhead clearance.”

He showed up the next morning to load our skis. Looking embarrassed, he said, “I just squashed your ski capsule. It's torn. I'll buy you a new one. Let's delay the trip a day.”

“No way,” I said, “There's snow in Alabama. We've got to get on the road. I have a roll of duct tape.”

We weatherproofed the capsule with duct tape and loaded skis. We were hoping to ski at **Lookout Pass** that day, but we got there just as it was closing. Thus, no ski pictures on day 1.

Note: The duct-taped capsule did fine. At the end of the season, I made permanent repairs with fiberglass. The capsule is as good as new.

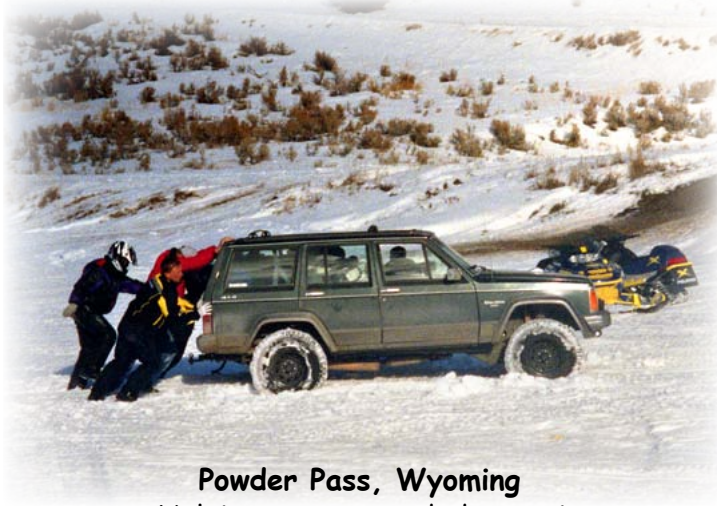
**Day 2. Discovery Basin, near Anaconda, Montana.** Our first ski stop on our trip from Seattle to Alabama was **Discovery Basin**. The back bowl, with 11 double diamond runs, was closed. The front was drenched in freezing rain. One run down its 1,200 vertical feet of icy, crusty crud caused us to shake off the ice and get on the road to Red Lodge, Montana, hoping for good snow.

**Day 3. Powder Pass, Big Horn Mountains, Wyoming, Elevation 9,666 ft.**

We helped a man stuck in the snow on a small lake. He had no shovel. I always carry a stout steel shovel along with my skis in the ski capsule. Paul and I shovelled in front of the rig for 200 feet. Two snowmobilers helped us finish the job.



Discovery Basin, Montana  
Carol Morford, Jewel Andrew, Paul Morford



Powder Pass, Wyoming  
Helping out a stranded motorist



**Day 4. Terry Peak, Black Hills, South Dakota.**

We finally find limited skiing at Terry Peak (1,056 vertical). Paul and Carol have seen good skiing there and are disappointed at the lack of snow and limited runs. So far, our attempt to ski to Alabama is not going well.



Jewel Andrew  
Terry Peak, S.D.

**Day 5. Sundown Resort, Dubuque, Iowa.**

We found a run almost named after us and couldn't resist letting Carol take our picture. Night skiing allowed us to log a ski area after driving 500 miles.



John & Jewel Andrew  
Sundown, Iowa

**A challenge for all**

You too can embark on a similar adventure. Try a modest goal of any 7 ski areas in the [Northwest Ski Challenge](#).

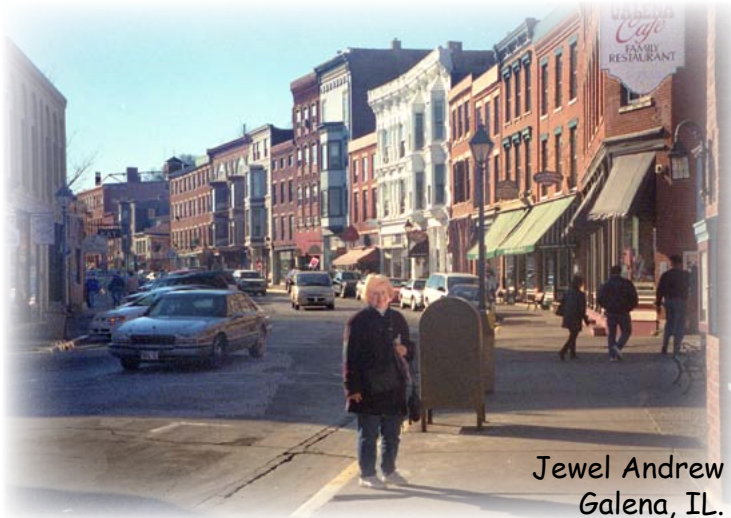
Or, how about visiting all 12 ski areas that are part of the Powder Alliance? See: [www.powderalliance.com](http://www.powderalliance.com)

For a more ambitious lifetime goal, try to ski the 161 western ski areas listed at: [www.mthigh.org/SkiAreas.htm](http://www.mthigh.org/SkiAreas.htm).

Use a modified form of John and Jewel's spreadsheet with 3 added columns, for up to 3 more people. Start entering a "1" for every ski area visited. See: [www.mthigh.org/Documents/North-American-Ski-Areas-2013-09-15.xls](http://www.mthigh.org/Documents/North-American-Ski-Areas-2013-09-15.xls)

**Day 6. Galena, Illinois.**

When Jewel and Carol saw this beautifully preserved and restored town from the 1850s, they went shopping and told John and Paul to go skiing.



Jewel Andrew  
Galena, IL.

**Day 6. Chestnut Mountain Resort, Galena, Illinois.**

I ski above the Mississippi River on Chesnut's 475 feet of vertical. Two of its west-facing runs were icy and challenging. After we skied everything once, we decided to rescue our credit cards from the girls who were shopping in Galena and get on the road to Indiana.



John Andrew  
Chesnut, IL

And we still haven't reached Alabama.

Stay tuned for the next part of the journey, including Cloudmont, Alabama, Sky Valley, Georgia, Gatlinburg, Tennessee, Apalachian Mt., North Carolina, Sugar Mt., N.C., Winterplace and Wintergreen., Virginia, Canaan Valley, W.V., and many more, ... and ending with: Winter Park (CO), Steamboat (CO), Jackson Hole (WY), and Sun Valley (ID).

Quite and adventure! To be continued ....

## NW Skiers' Directory

The NW Skiers' Directory is now available online. You can flip pages by clicking in the lower right corner, or swiping if you have a touch sensitive screen. You can also zoom in and out by clicking anywhere else on the page. See it at: <http://www.nwskiers.org/SkiersDirectory/SkiersDirectory/>

You can also find free printed copies of this 74 page booklet at local ski shops. Our very own **Linda McGavin** is the editor of this annual publication.

## Oregon Wintercation

**Ski Oregon** is offering a 7-night, 8-day adventure on the snow, exploring Oregon! Grand Prize includes:

- \* 2 Alaska Airlines tickets.
- \* Winter rentals for two for eight days from The Mountain Shop.
- \* Four nights lodging for two at the historic Timberline Lodge.
- \* Four days breakfast for two at the Timberline Lodge
- \* Four days of lift tickets for two at the Mt. Hood resort of choice; Timberline, Skibowl, Meadows, or Cooper Spur.
- \* Three nights lodging for two at the DoubleTree Hilton in downtown Bend.
- \* Three days of lift tickets for two at either Mt. Bachelor or Hoodoo.

Enter to win at: <http://www.skioregon.org/wintercation/>

## Meadows tickets

You can buy discounted lift tickets for Mt. Hood Meadows thanks to a cooperation between Bergfreunde and Mountain High clubs.

The Bergfreunde Ski Club is selling discount Mt. Hood Meadows lift tickets for \$64.each. Buy as many or as few as you want.

If interested, contact:

Shawn Storey

DH Ski Director BSC

Phone: 360-910-8709

Email: [irishcatty@gmail.com](mailto:irishcatty@gmail.com)

## Ski Trip Parking

The **Monarch Hotel** in Clackamas has given us permission to leave our cars in their parking lot when we go on ski trips. Most of our future trips will be starting from there.

You can thank the Monarch Hotel by having a meal or a drink there.

The location is next to I-205, between the Sunnyside and Sunnybrook exits (not far from Clackamas Town Center). If you are coming from the south, take the Sunnybrook exit. If coming from the north, take the Sunnyside exit.

If you are uneasy about leaving your car there, consider carpooling, ask a friend or relative for a ride, or take a taxi.

## Meadows mid-week special

Meadows has a BIG midweek special until January 17th: [http://www.skihood.com/Store/Products/Specials/Pass-Specials/Two-Midweek-Adult-Lift-Passes-And-Meal?promo\\_id=%2499%20Two%20Lift%20Passes%20%26%20a%20Meal](http://www.skihood.com/Store/Products/Specials/Pass-Specials/Two-Midweek-Adult-Lift-Passes-And-Meal?promo_id=%2499%20Two%20Lift%20Passes%20%26%20a%20Meal)

\$99 for TWO tickets and a \$25 food credit!

Restrictions: Mid-week only. You have to buy it online, and can't use it the same day you buy it.

## Coffee on our bus trips



We served coffee on the bus on our day trips last year, thanks to **Scott Stepan** and his **Gourmet Coffee Brew Master**

company.

We thought we should continue this and started looking for some airports to buy. Upon hearing this, Scott Stepan graciously offered to donate some airports that we can use to serve coffee and tea on our future bus trips.

So, get ready for some freshly brewed java on our upcoming trips.

Life is good! Thanks, Scott!

## \$10 Rotary Day at Mt. Hood Meadows

**Jan 20, 2014.** (Monday) 2 pm - 9 pm.

At this fundraiser organized by the Hood River Rotary Club, Mt. Hood Meadows lift tickets will be just \$10, or \$15 if purchased from the Mt. Hood Meadows ticket sales window.

This is Martin Luther King Day, a holiday.

On the day of the event, the Rotary tickets should be purchased from Rotarians who stand at the top of the breezeway stairs by the Coffee/deli. Also there is another Rotarian posted at the ramp corner across from the entrance to the ski clothing shop.

## Bring a Friend / Learn to Ski Month



**January** is "Learn to Ski" months. Ski areas are supporting this by offering a challenge with rewards.

Introduce someone to skiing or snowboarding to sign up for the Bring a Friend Challenge!

When your novice friend signs up for lessons from a professional ski instructor, you'll be entered to win prizes, swag and trips by the Bring a Friend sponsors when you register online at:

<http://www.bringafriend.org/>



## Mt. Bachelor terrain expansion

**Mt. Bachelor** is opening new terrain on the far east side of the mountain. Mainly intermediate trails. This year, skiing there may require a hike out at the bottom, but by next winter, 2014-15, a new **Eastside Express** detachable quad lift will be installed approximately 3,100 feet east of the existing Rainbow chair.

Sometime after the Summit chairlift opens this season, Bachelor will open 80 new acres south of the east catch line, according to mountain manager Tom Lomax. The catch line will feed skiers and snowboarders back to the Rainbow chairlift.

Later this winter, the resort plans to open more terrain below that catch line that will require a hike back to Rainbow along a groomed track. Snowriders entering that terrain will encounter informational signs explaining that they must hike back to the lifts.

"It'll be gated terrain, and it will be open in select situations. And I don't expect it to open the first day after a storm cycle on Summit. We'll get Summit open,

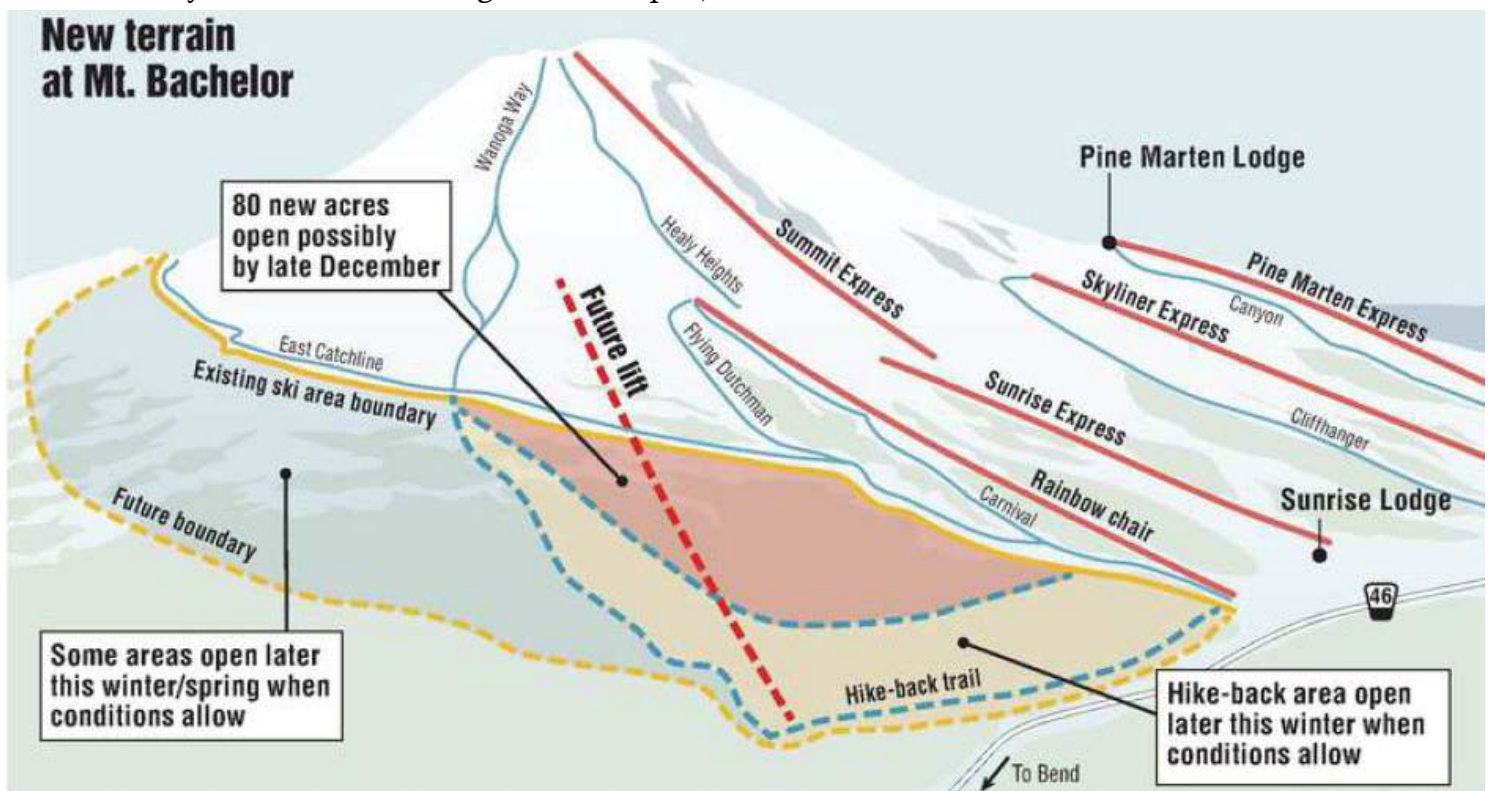


Eastside terrain

and then maybe it's two or three days later when we can open those gates for that hike-back terrain."

The 80 new acres will not be groomed, but rather off-piste tree skiing that requires the appropriate safety measures, such as not skiing alone, having a charged cellphone, somebody knowing you're out there, and being wary of tree wells.

The new 80 to 150 acres could open sometime in late December, according to Lomax. That acreage is part of an additional 620 skiable acres that will be added to Bachelor once the new east-side chairlift is constructed.



## Too late for the Mt. Bachelor lift ticket deal

Mt. Bachelor offered us all a deal on **\$52** lift tickets for the 2013-2014 season. But note that these tickets should have been purchased before 4 pm **December 20th 2013** by calling 1-800-829-2442 and asking for the **NWSCC Club Deal**. **It is too late to purchase these tickets now!**

Your NWSCC/Mt. High membership card & photo ID are necessary to pick up your tickets at Mt. Bachelor ticket window, if you have purchased them in time. Black out dates are Dec 26-31 Jan 1-4, Jan 18-19 and Feb 15-16. Tickets are non refundable and non transferable. One lift ticket can be redeemed per day.



The NW Ski Club Council has been rewarding skiers and snowboarders who visit lots of Northwest ski areas. One or more lucky winners each year have a chance to win a prize. The list of qualifying ski areas has expanded to Alaska, Hawaii, British Columbia (Big White, Red Mountain, and Whitewater) and Mammoth Mt., California. Only the ski areas shown on the map qualify, and that includes all of Oregon, Washington and Idaho.

**Ski or ride any 7 or more resorts shown on the map during the 2013-2014 ski season to be eligible to win a prize.** The more ski areas you visit, the greater your chance of winning. Just save your lift tickets or receipts, and qualify a prize! The winners of the drawing will be announced in the Fall of 2014.

To qualify for a prize, submit your lift tickets (or receipts) to: NWSCC, 5331 SW Macadam Avenue, Suite 258, Box 438, Portland, OR 97239. More info on our Council's web site: [www.nwskiers.org](http://www.nwskiers.org). Also, see the [Articles](#) page on the Mt. High web site for several articles documenting some of the previous Ski Challenges.

### Last year's challenge winners

Last winter, 10 people participated in the challenge and sent in their entry forms with proof of having visited the ski areas.

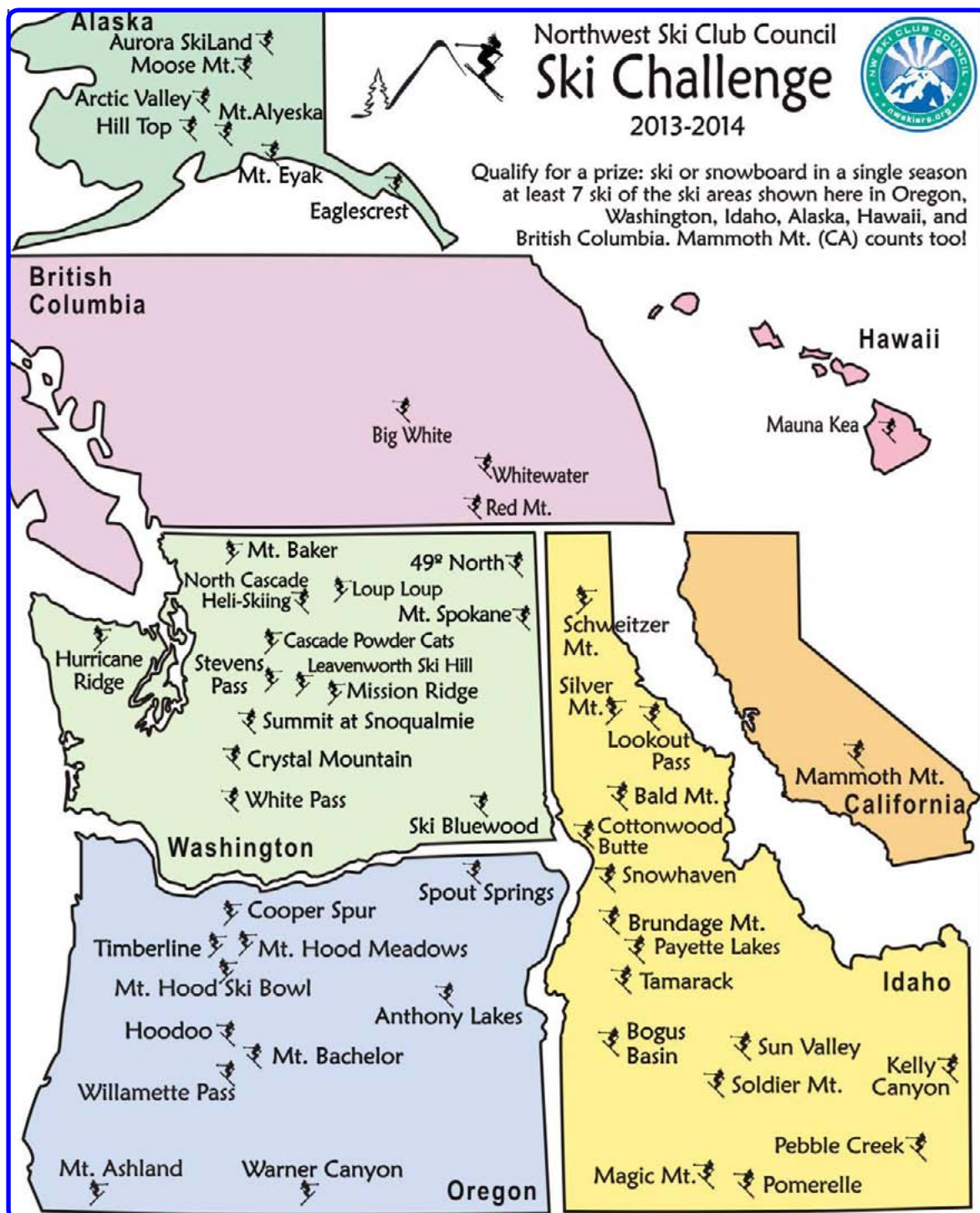
The winners were the three individuals who visited the largest number of ski areas. They were:

1. Emilio Trampuz
2. Kurt Wilke
2. Bob Burns

Kurt and Bob tied for 2nd place with the same number of ski areas visited.

The prizes consisted of lift tickets and/or Mountain Shop gift certificates.

You too can be a winner. Just save your lift ticket or your credit card receipt and submit it to the NWSCC at the end of the season.



## TRIPS

Here are the ski trips planned for this season. Also, see more details on our web site, on the TRIPS page.

Note that all 3 Mt. High trips will be **bus** trips. Notice the bus symbol on the right side of the trip headline.

When planning your trip(s), remember the Fusion Pass/Powder Alliance deal can save you \$180 on the Idaho trip, and \$50 on the Leavenworth trip.

### Mt. High Idaho Panhandle bus trip



Schweitzer Mt.

**Jan. 27 - Feb. 1, 2014.**

6 days/ 5 nights / 5 days skiing.

We'll ski and stay at **Schweitzer Mt.** for 3 days and nights to make use of the 3 free lift tickets with the Fusion Pass/ Powder Alliance deal. It's OK if you don't have the Fusion Pass; you'll just have to pay a bit more.

**Schweitzer Mt.** is one of the few places in the US offering true ski-in/ski-out, and great powder. Schweitzer Mt. is known for its powder, glade skiing, long cruisers, snow ghosts and fantastic views of Lake Pend Oreille.

Also, you can learn about the legend of Phineas Schweitzer, hear his ghost, and see some of his inventions, such as the 6-pack chairlift and the fog-o-meter!

Then we'll move to Kellogg, Idaho, where we will stay for 2 nights near the bottom of the gondola to **Silver Mt.**

On the first day there, we'll have our bus take us about 25 minutes east to **Lookout Pass** ski area on the Montana border. This is Idaho's number 1 powder place. It gets significantly more snow than Schweitzer Mt.

At Lookout Pass, you can ski the Idaho side, the Montana side, and the North side. At lunch, notice that the day lodge is built right on the State line, and you can have lunch in the Montana dining room or in the Idaho dining room.



On the last day of the trip, we will ski at Silver Mountain, just a gondola ride above our lodgings. Silver Mt. has opened two new trails recently. Last winter, they opened the "Bootlegger" trail. This year, a new trail has been added named "Shady Lady" and the challenge will be to find where it is.

We'll have to stop skiing shortly after lunch ... or maybe you can skip lunch and keep on skiing. We need to leave early because we'll have a long drive home.

Our bus will leave Kellogg around 2 pm, and we should be back in Portland some time shortly after 9 pm on Saturday night. Then you'll have all of Sunday to rest and recover from the trip.

**The price** covers lodging, skiing, and bus transportation, as well as at least one dinner.

Regular = **\$875**. Senior (65+) = **\$835**.

If you have a Fusion Pass, you can save a lot on this trip thanks to the Powder Alliance deal.

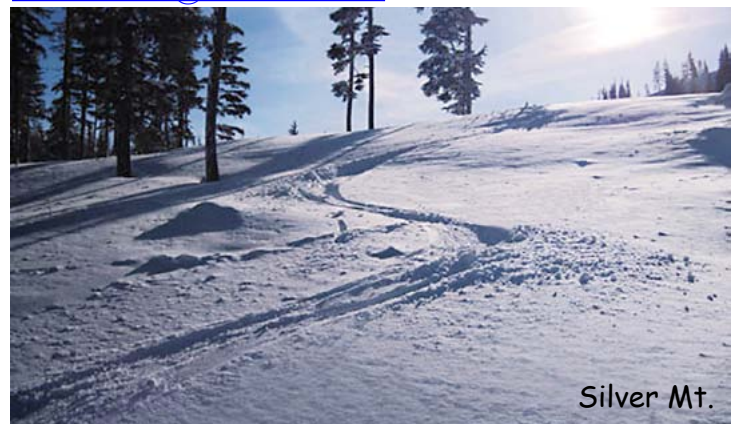
Regular with Fusion pass = **\$695**.

Senior with Fusion pass = **\$675**.

These Fusion Pass prices also apply if you have purchased a Ski3 pack of tickets directly from Schweitzer.

Use our [Dough Transmittal Form](#) for all payments. Pay in full by December 27. No refunds after that.

Details on our web site. Contact: **Emilio**, 503-378-0171, [Emilio2000@earthlink.net](mailto:Emilio2000@earthlink.net)



Silver Mt.



**MOUNTAIN HIGH****Mt. High Trips****SNOWSPORT CLUB****Mt. High****Mt. Bachelor bus trip****Feb. 21 - 23, 2014.**

2 nights / 2 days skiing.

We'll be leaving Friday evening around 5:30 pm or so, and will return to Portland Sunday evening.

If the weather is good, you can ski all 360 degrees around the mountain. Lots of terrain to explore, including powder, glades, open meadows, and more.

**Lodging** at the Bend Riverside Inn & Suites.

**Price:** Adults: \$250, or \$135 without lift tickets.

Seniors 65-69 : \$230

Super-seniors 70+ : \$205

Deposit: \$100. Full payment due by January 20. Please use our [Dough Transmittal Form](#) for all payments.

Make check payable to Mountain High and mail it to the PO Box address at the top of the form.

More on our web site. Contact: **Debbi Kor**, 503-314-7078, [ijustwannarun1@comcast.net](mailto:ijustwannarun1@comcast.net)



Leeway trail on Mt. Bachelor

**Mt. High****Leavenworth bus trip**

Bomber wing at Mission Ridge

**March 21 - 23, 2014.** Bus trip. We'll leave Portland on Friday at 4 pm and return Sunday by about 9:30 pm.

2 nights / 2 days skiing at:

1. **Mission Ridge.** 2,250' vertical. 1 Express Quad, 3 Doubles. You can ski by a World War II bomber that crashed there.

2. **Stevens Pass**, lots of tree skiing, front and back + lots of cruisers! 1,800' vertical on 3 sides of 2 different mountains, served by 3 Quads, 4 Triples, 3 Doubles.

**Lodging:** Obertal Inn, right in the middle of Leavenworth. Rooms with fireplace or jacuzzi available.

Dinner: Saturday night, included in the trip price, we'll have dinner at King Ludwig's restaurant, with live polka music!

**Price:** Adult \$299 or \$250 (if you have Fusion Pass)

Super-seniors (70+): \$250

For room with fireplace: add \$23 pp.

For just 4 instead of 5 in townhome: add \$30pp

**The price** covers lodging, skiing, and bus transportation, as well as one dinner. But there are many variables on this trip, so please see more details on our web site.

Use our [Dough Transmittal Form](#) for all payments. Full payment due by February 20. No refunds after Feb. 20 unless you can fill your spot. Please specify if you want one of the special rooms.

NOTE: Only 38 spots available at the standard rate. After those 38 spots get filled, you'll only be able to sign up for the more expensive options

**Contact:** Trip leader [Linda McGavin](mailto:LindaMcGavin@mthigh.org), 503-652-2840, [Trips@mthigh.org](mailto:Trips@mthigh.org)



Wally at Stevens Pass

## MOUNTAIN HIGH

## Multi-club Trips

## SNOWSPORT CLUB

## FWSA Ski Week: Beaver Creek, CO



**Jan. 25 - Feb. 1, 2014.** This is an annual week of skiing, bringing together ski clubs from all over the West. Only the location is different each year. See details at:

<http://www.fwsa.org/Travel/NAski/2014-FWSA-BeaverCreek/2014-FWSA-BeaverCreek.html>

**Included:** 7 nights lodging, Mountain Rally, Welcome Party, Races, Pub Crawl, Mountain Picnic, Banquet, Awards Après Party, Transportation to FWSA Events, 5 or 6 Day Lift Ticket good at 5 Colorado Resorts: Beaver Creek, Vail, Breckenridge, Keystone, Arapahoe Basin.

**Not included:** Air or airport ground transportation.

**Contact:** Christine Ciardi, [c2blondie@hotmail.com](mailto:c2blondie@hotmail.com) 503-819-3128. **Base price** = \$1,229.

## FWSA Mini Ski Week: Snowbasin, UT



**Feb. 22 - 27, 2014.**

5 nights / 3 or 4 days. Lodging is at La Quinta Inn in Layton, Utah, about 25 minutes from the Snowbasin ski area.

**Price** = \$425 - \$475. **Included:** 5 nights lodging, welcome and farewell parties, pub crawl, 3 or 4 days at Snowbasin, and shuttle bus from Layton to Snowbasin.

**Not included:** Air or transportation from airport.

**Trip Leader:** Gloria Raminha, 661-829-5996 [H], 661-800-8229 [C], [garski2011@gmail.com](mailto:garski2011@gmail.com).

**Details:** <http://www.fwsa.org/Travel/NAski/2014-FWSA-Snowbasin/2014-FWSA-Snowbasin.html>

## International Ski Week: Zermatt, Switzerland



**March 6 - 15, 2014.**

**Price** = \$1,908 - \$2,908.

**Included:** 7 nights lodging in a choice of 3 hotels, welcome and farewell parties, breakfast & dinner daily,

airport ground transfers, tour escort, 2 apres ski parties.

**Air-fare:** Additional \$1,109 + \$526 fuel surcharge + \$126 in departure taxes. Both fees might change.

**Not included:** Lift tickets, optional day tours, optional post-trip extensions to Barcelona and Madrid, Spain.

**Trip Leader:** Debbie Stewart, VP International Travel, 430 S. Church St., Visalia, CA 93277, 559-734-9294 [B] 559-737-0882 [C], [vpinternationaltravel@fwsa.org](mailto:vpinternationaltravel@fwsa.org)

## Bergfreunde

## Tahoe Sampler



**Feb. 23 - Mar. 1, 2014.** Mt. High members are invited to join this flexible carpooling trip.

**Cost:** \$332 (pp/do, land only). \$150 down, bal-

ance by Jan. 1. (Single room: add \$176.20.) No guests - you must be a member of ANY ski club.

**Included:**

- 6 nights lodging,
- Hospitality room on Sun, Mon, Fri.,
- 2 Group dinners.
- Dinner dance cruise on Tahoe Queen paddle wheeler
- A trip souvenir.

**Lodging:** at the Bluelake Inn, within a few blocks of the casinos and the Heavenly gondola. Each room has a refrigerator and microwave.

**Skiing:** We'll be taking advantage of any lift ticket deals that are offered by the 16 different ski areas. Last year, we skied 5 areas for about \$200. This year, Sierra-at-Tahoe is part of the Powder Alliance (see page 14).

Note that this is also a cross-country and snowshoe trip.

**Contact:** Bob Burns: 503-524-5261 (phone/fax), [bob@inkjetman.com](mailto:bob@inkjetman.com).

Make checks payable to **Bergfreunde Ski Club**.

**Send payments to:** Bob Burns, 9980 SW Citation Place, Beaverton, OR 97008. Include: Your name; club name; address; phone numbers; and email address.

**Details:** [www.mthigh.org/Trips.htm#Tahoe\\_Sampler](http://www.mthigh.org/Trips.htm#Tahoe_Sampler)

## FWRA Championships



**April 4-6, 2014.** Annual inter-club competition. This year, it will be held at Mammoth Mt., CA.

Slalom on one day and Giant Slalom on the other.

This is a great opportunity to experience what a real Slalom course feels like! All our PACRAT racers are automatically qualified to enter this competition.

Details have not been announced yet, but they should probably be published soon on the Far West Racing Association web site, <http://fwra.com/>

**Contact:** Bob Ellis, [rellis9681@aol.com](mailto:rellis9681@aol.com)



## MOUNTAIN HIGH

## Contacts / Club info

## SNOWSPORT CLUB

## Man &amp; Woman of the Year

Our club's Man and Woman of the Year, are:

**Bruce Kuper**, who is also our new Racing Director, and

**Chris Brooks**, our former club Secretary, and also our ongoing hikes leader.



Bruce Kuper



Chris Brooks

## Mountain High Meeting

Usually the last Monday. This month is an exception, because many of us will be on the Idaho trip at the end of January.

**Feb 3. (Mon.):** Open to all who want to get more involved with the club. Gather at **6:00 pm**. Start at **6:30 pm**.

**Location: Round Table Pizza, 10070 SW Barbur Blvd. (near Capitol Hwy.)**

## Mountain High snowsport club contacts:

**President:** Kurt Krueger H: 503-625-1492,  
**Vice-President:** Terry White H: 503-781-4558  
**Secretary:** Lisa Scribner H: 360-904-1302,  
**Treasurer:** Nancy Pratt H: 503-593-9427,  
**Membership Director:** Terry Swan H: 503-729-3435  
**Race Director:** Bruce Kuper H: 503-975-8039,  
**Newsletter Editor:** Emilio Trampuz H: 1-503-378-0171,  
**Social Activities:** Debbi Kor H: 503-314-7078,  
**Golf:** Cal Eddy H: 503-805-8606,  
**Hiking:** Chris Brooks H: 503-764-5323,  
**Mid-week skiing:** Ken Brundidge H: 503-720-0620,  
**Trip Director:** Linda McGavin H: 503-652-2840,  
**Trip Leader:** Gordon Lusk H: 503-804-8363,

[President@mthigh.org](mailto:President@mthigh.org)  
[TWhite223@msn.com](mailto:TWhite223@msn.com)  
[LScribner98@yahoo.com](mailto:LScribner98@yahoo.com)  
[Treasurer@mthigh.org](mailto:Treasurer@mthigh.org)  
[swans761@juno.com](mailto:swans761@juno.com)  
[bruku@comcast.net](mailto:bruku@comcast.net)  
[newsletter@mthigh.org](mailto:newsletter@mthigh.org)  
[ijustwannarun1@comcast.net](mailto:ijustwannarun1@comcast.net)  
[baebaw@ccgmail.net](mailto:baebaw@ccgmail.net)  
[jruffman@aol.com](mailto:jruffman@aol.com)  
[KenBrundidge@comcast.net](mailto:KenBrundidge@comcast.net)  
[Trips@mthigh.org](mailto:Trips@mthigh.org)  
[GordyLusk@hotmail.com](mailto:GordyLusk@hotmail.com)

General info:  
[info@mthigh.org](mailto:info@mthigh.org)  
 Web site:  
[www.mthigh.org](http://www.mthigh.org)

## DOUGH TRANSMITTAL FORM

Mail check payable to: Mountain High Snowsport Club, PO Box 2182, Portland, OR 97208.

PLEASE PRINT CLEARLY: ☐ New membership ☐ Renewal

Name(s): \_\_\_\_\_

Address: \_\_\_\_\_

Phone (Hm): \_\_\_\_\_ Phone (Wk): \_\_\_\_\_

Email (Hm): \_\_\_\_\_ Email (Wk): \_\_\_\_\_

By joining the Mountain High Snowsport Club, I acknowledge that I am responsible for my own safety and conduct. I hereby agree to be bound by all Mountain High Snowsport Club bylaws and regulations, including the Trip Cancellation Policy. I hereby release Mountain High Snowsport Club, and any of their agents (officers, directors, trip captains, and any other Club representatives) from liability for personal injury, property damage, or any other liability of any kind connected with my participation in any club-related activity. Furthermore, I agree to indemnify and hold the Club and any of their agents harmless from any and all liabilities of any kind which may be incurred or asserted against the Club or any of their agents in any way relating to my negligence or willful misconduct connected with my participation in the club's activities.

**Email Preferences:** - Newsletter (once a month): ☐ yes, link only ☐ yes, complete file ☐ no  
☐ No changes - Club news & events (between newsletters): ☐ yes ☐ no  
 (same as last year) - Other ski news (NWSCC, FWSA, ski areas, trips...): ☐ yes ☐ no  
 - Is it OK to share your email address with other club members? ☐ Yes ☐ No

Please take my money, and apply it toward the following Ski Club fun stuff:

	Deposit?	Paid in full?
<input type="checkbox"/> <b>Annual Membership</b> (Oct. 1, 2012 - Sept. 2013): Single (\$25); couple (\$40)	\$ _____	_____
<input type="checkbox"/> <b>PACRAT Racing (2014)</b> \$95 for the whole season . Team: _____	\$ _____	_____
<input type="checkbox"/> <b>Idaho trip</b> (Jan. 27-Feb. 1). W/o / With Fusion Pass \$875 / \$695. Senior: \$835 / \$675	\$ _____	_____
<input type="checkbox"/> <b>Mt. Bachelor</b> (Feb. 21-23). Adult: \$250, Senior (65-69): \$230, Over 70: \$205.	\$ _____	_____
<input type="checkbox"/> <b>Leavenworth</b> (Mar. 21-23). \$299 (or \$250 w/Fusion pass). Over 70: \$250.	\$ _____	_____
<input type="checkbox"/> <b>Other:</b> _____	\$ _____	_____

Comments (For whom you are paying. Roommate requests,...): \_\_\_\_\_

Signature(s): \_\_\_\_\_ Date: \_\_\_\_\_

Signature(s): \_\_\_\_\_ Date: \_\_\_\_\_

See our Trips cancellation policy on our web site: <http://www.mthigh.org/Documents/Trip-Cancellation-Policy.pdf>

**Club membership = 323    Newsletter Distribution**

The January 2014 issue is posted on our web site. Also:  
 385 copies sent via email (as PDF files)  
 22 paper printed copies sent via US Mail.  
 Copies are sent to potential members, other clubs, etc..

**Fundraisers, Good karma**



**Mar. 8- 9, 2014:**    **Hope on the Slopes,**  
 a 24 hour ski challenge and fundraiser for the American Cancer Society, held at Mt. Hood Skibowl Friday afternoon - Saturday morning.

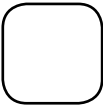
**Mar. 9 - 10, 2014:**    **Oregon Cancer Ski Out,**  
 a fun 2-day event (Sunday & Monday) at Mt. Hood Meadows. Teams of 5 compete for best consistency (not speed).

**Apr. 12 (Sat.), 2014:**    **Ski to Defeat ALS,** a fund raiser for ALS (Lou Gehrig's Disease). Inspired by **Fred Noble**, held at Mt. Hood Meadows.

**All these events** are a lot of fun. Each provides something special. See details on our Mt. High web site.

**Powder Alliance**

If you have a Fusion Pass to Timberline and Skibowl, you automatically get 30 free ski days at these 10 other ski resorts (3 tickets per resort). Can you ski all 12 of them? After all, they are free! What a ski safari that would be!!! See [www.powderalliance.com](http://www.powderalliance.com)



Emilio Trampuz  
 Mountain High Newsletter editor  
 4742 Liberty Rd. S., #296  
 Salem, OR 97302  
 Please check our web site,  
[www.mthigh.org](http://www.mthigh.org)  
 for updates.